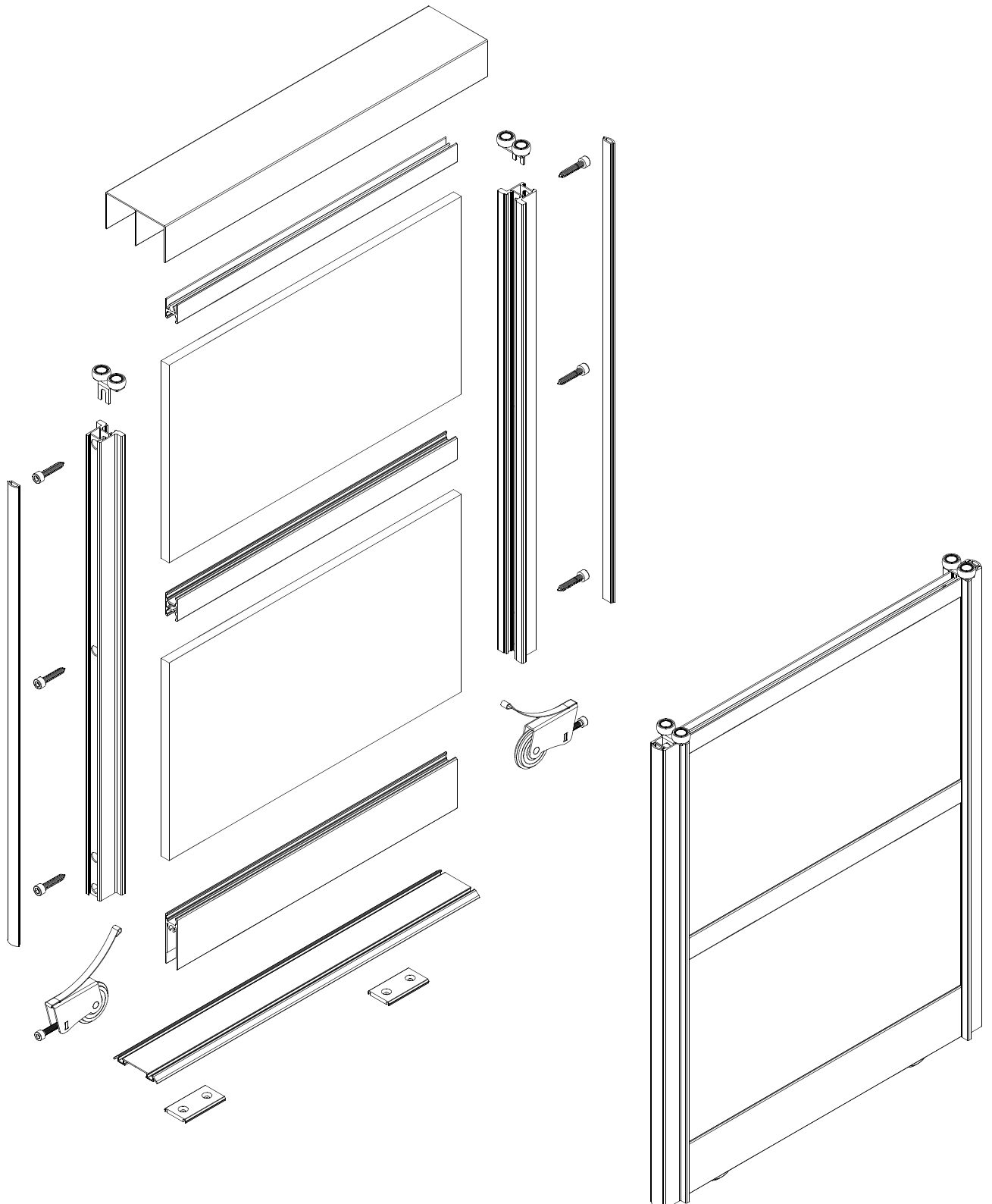
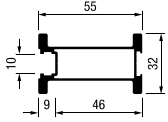


for 10 mm board · 3/4/5/6 mm glass
tablero 10 mm · cristal 3/4/5/6 mm



10 mm board · tablero 10 mm

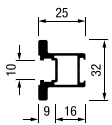
handle profiles
tiradores



TR-BASE 55

17B260***

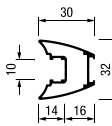
17B290***



TR-BASE 25

17A260***

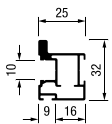
17A290***



TR-BASE S1

17C260***

17C290***

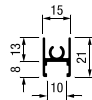


TR-BASE S3

17D260***

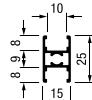
17D290***

horizontal profiles
perfiles horizontales



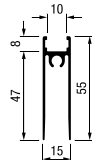
RS-BASE

174500***



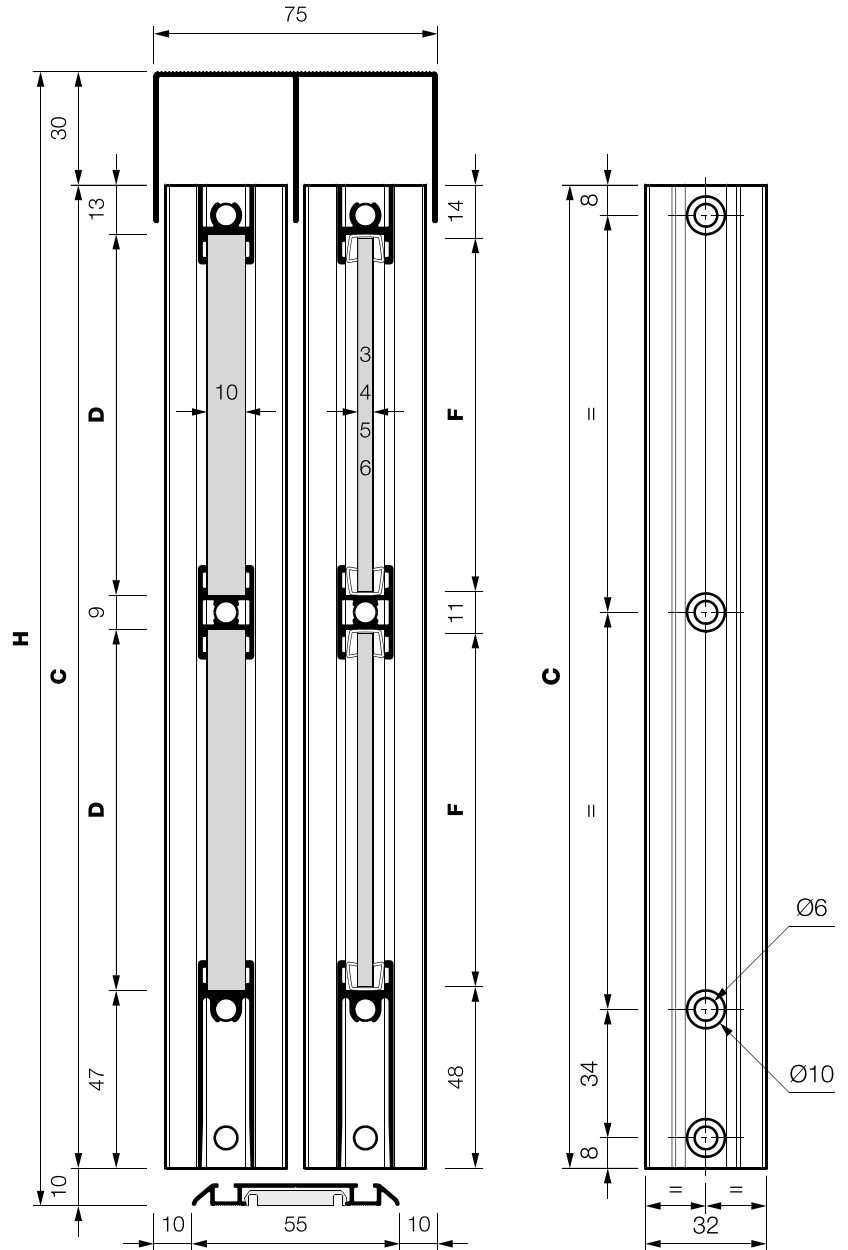
RC-BASE

175500***



RI-BASE

173500***



“H” divisions · divisiones “H”

0 div. D = C - 60 mm

1 div. D = $\frac{C}{2}$ - 34,5 mm

2 div. D = $\frac{C}{3}$ - 26 mm

3 div. D = $\frac{C}{4}$ - 22 mm

4 div. D = $\frac{C}{5}$ - 19,5 mm

5 div. D = $\frac{C}{6}$ - 17,5 mm

H open area height · alto hueco de luz

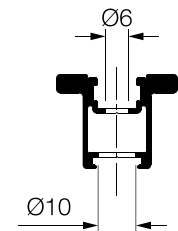
C door height · alto de puerta

D board height · alto de tablero

F glass height · alto de cristal

C = H - 40 mm

F = D - 2 mm

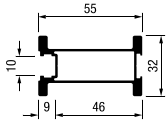


handle profile drillings
mecanizados tirador

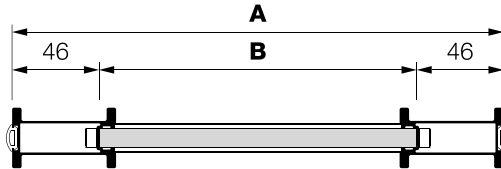
10 mm board · tablero 10 mm

A door width · ancho de puerta
B board width · ancho de tablero

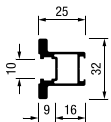
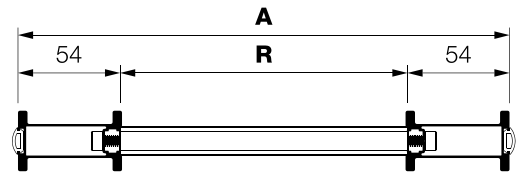
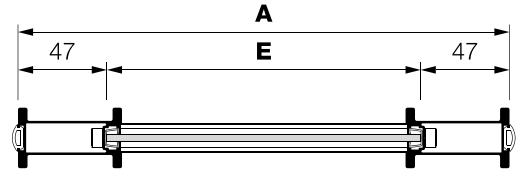
E glass width · ancho de cristal
R horizontal profile · perfil horizontal



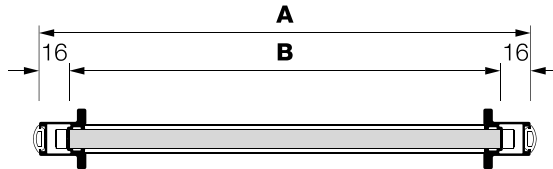
TR-BASE 55
17B260***
17B290***



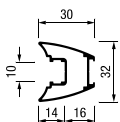
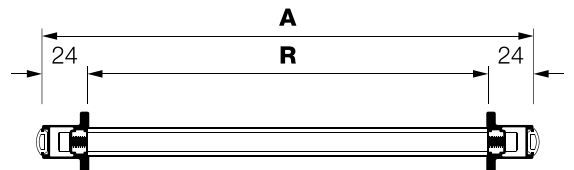
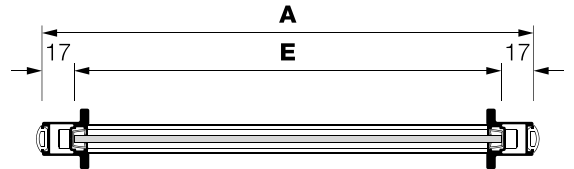
$B = A - 92 \text{ mm}$
 $E = A - 94 \text{ mm}$
 $R = A - 108 \text{ mm}$



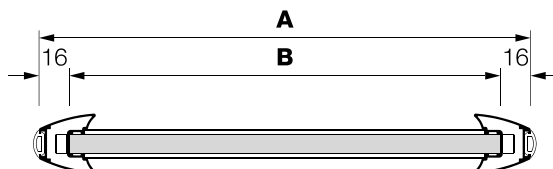
TR-BASE 25
17A260***
17A290***



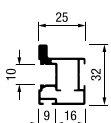
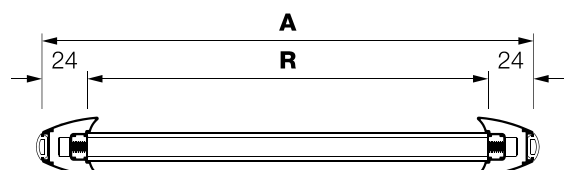
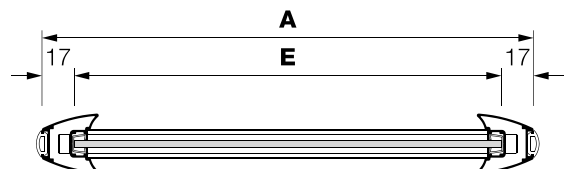
$B = A - 32 \text{ mm}$
 $E = A - 34 \text{ mm}$
 $R = A - 48 \text{ mm}$



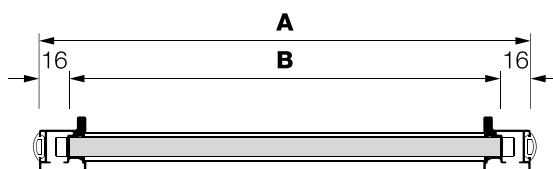
TR-BASE S1
17C260***
17C290***



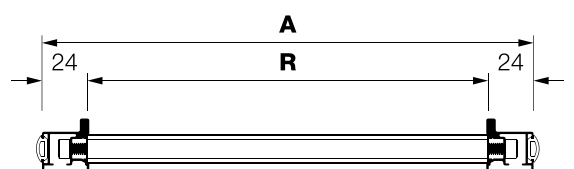
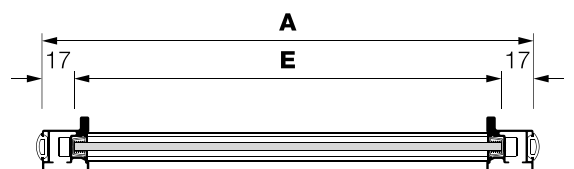
$B = A - 32 \text{ mm}$
 $E = A - 34 \text{ mm}$
 $R = A - 48 \text{ mm}$



TR-BASE S3
17D260***
17D290***



$B = A - 32 \text{ mm}$
 $E = A - 34 \text{ mm}$
 $R = A - 48 \text{ mm}$



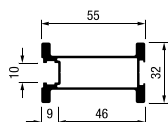
10 mm board · tablero 10 mm

- L** open area width · ancho hueco de luz
A door width · ancho de puerta
B board width · ancho de tablero

TR-BASE 55

17B260***

17B290***



2 doors · puertas

$$A = \frac{L}{2} + 24,5 \text{ mm}$$

$$B = \frac{L}{2} - 67,5 \text{ mm}$$

3 doors · puertas

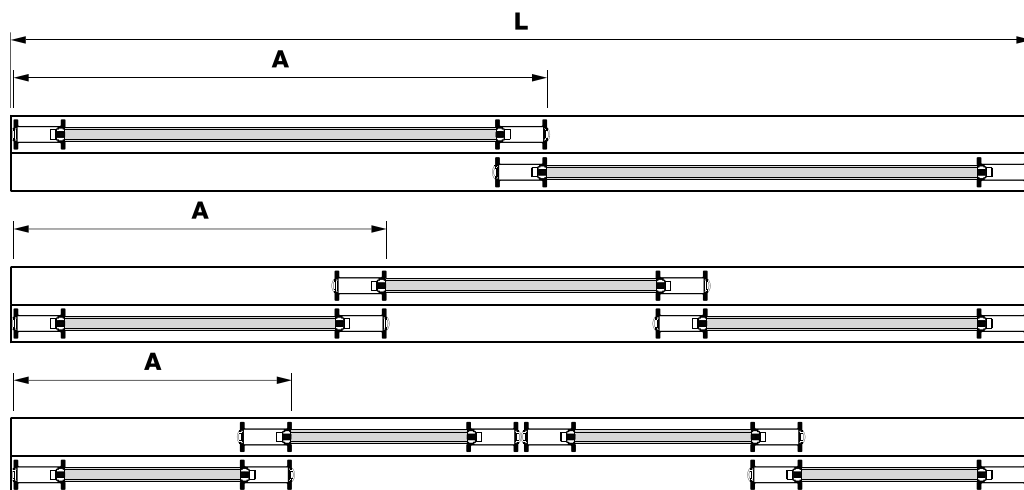
$$A = \frac{L}{3} + 34,5 \text{ mm}$$

$$B = \frac{L}{3} - 57,5 \text{ mm}$$

4 doors · puertas

$$A = \frac{L}{4} + 24,5 \text{ mm}$$

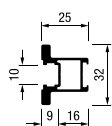
$$B = \frac{L}{4} - 67,5 \text{ mm}$$



TR-BASE 25

17A260***

17A290***



2 doors · puertas

$$A = \frac{L}{2} + 9,5 \text{ mm}$$

$$B = \frac{L}{2} - 22,5 \text{ mm}$$

3 doors · puertas

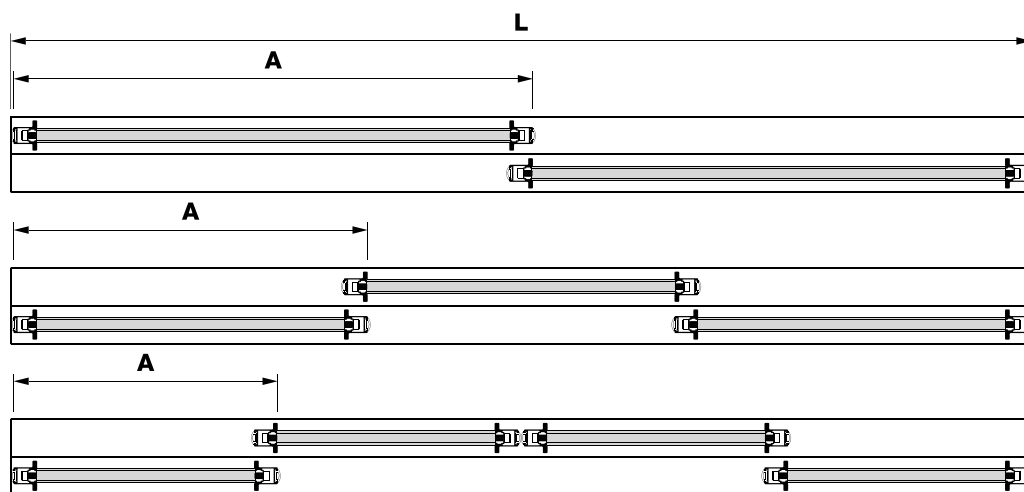
$$A = \frac{L}{3} + 14,5 \text{ mm}$$

$$B = \frac{L}{3} - 17,5 \text{ mm}$$

4 doors · puertas

$$A = \frac{L}{4} + 9,5 \text{ mm}$$

$$B = \frac{L}{4} - 22,5 \text{ mm}$$



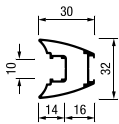
10 mm board · tablero 10 mm

- L** open area width · ancho hueco de luz
A door width · ancho de puerta
B board width · ancho de tablero

TR-BASE S1

17C260***

17C290***



2 doors · puertas

$$A = \frac{L}{2} + 12 \text{ mm}$$

$$B = \frac{L}{2} - 20 \text{ mm}$$

3 doors · puertas

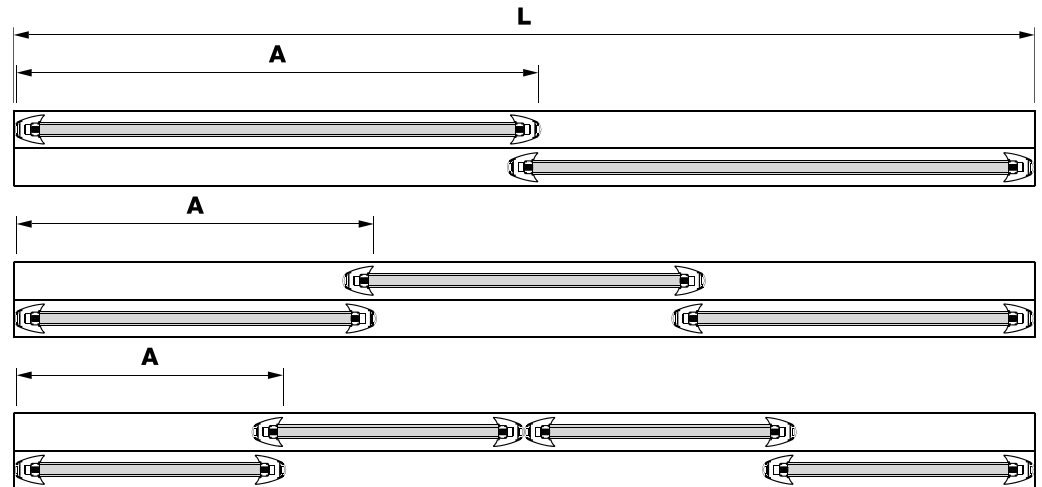
$$A = \frac{L}{3} + 18 \text{ mm}$$

$$B = \frac{L}{3} - 14 \text{ mm}$$

4 doors · puertas

$$A = \frac{L}{4} + 12 \text{ mm}$$

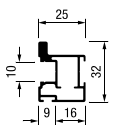
$$B = \frac{L}{4} - 20 \text{ mm}$$



TR-BASE S3

17D260***

17D290***



2 doors · puertas

$$A = \frac{L}{2} + 9,5 \text{ mm}$$

$$B = \frac{L}{2} - 22,5 \text{ mm}$$

3 doors · puertas

$$A = \frac{L}{3} + 14,5 \text{ mm}$$

$$B = \frac{L}{3} - 17,5 \text{ mm}$$

4 doors · puertas

$$A = \frac{L}{4} + 9,5 \text{ mm}$$

$$B = \frac{L}{4} - 22,5 \text{ mm}$$

