

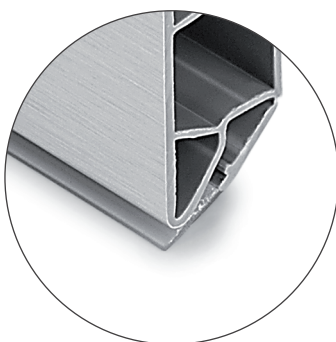
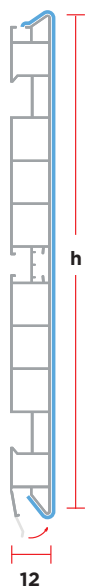
# 4600

## RIVESTIMENTO FOGLIA ALLUMINIO ALUMINUM COATINGS

Zoccolo in resina artificiale con guarnizione opalina a semiscomparsa.  
**Completo di film protettivo.**

PVC plinth with half-hidden opaline gasket.  
**Featuring protective film.**

FA



CODE	UNIT	DIMENSION		MIN ORDER QTY	PCS/BOX	BOX SIZES		WEIGHT	VOLUME
		H	L			ML	NR		
<b>R460008xxx01F</b>	ML	80	4000	520	10	BOX12	4050x145x110	16,70	0,065
<b>R460010xxx01F</b>	ML	100	4000	200	10	BOX12	4050x145x110	17,50	0,065
<b>R460011xxx01F</b>	ML	110	4000	520	10	BOX12A	4040x137x130	17,70	0,072
<b>R460012xxx01F</b>	ML	120	4000	200	10	BOX12A	4040x137x130	18,70	0,072
<b>R460013xxx01F</b>	ML	130	4000	520	10	BOX12	4050x145x110	16,80	0,065
<b>R460014xxx01F</b>	ML	140	4000	520	10	BOX11	4050x175x115	20,10	0,082
<b>R460015xxx01F</b>	ML	150	4000	200	10	BOX11	4050x175x115	22,30	0,082
<b>R460017xxx01F</b>	ML	170	4000	520	10	BOX07	4050x110x205	30,60	0,091
<b>R460018xxx01F</b>	ML	180	4000	200	8	BOX07	4050x110x205	33,60	0,091

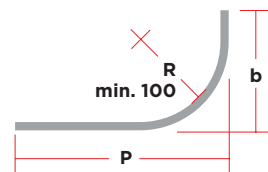
## 4KC CURVO BENDED

Zoccolo curvo.  
Disponibile per tutte le altezze.

Bended plinth.  
Available for all plinth heights.

FATTIBILITÀ DA VERIFICARE  
IN BASE AL DISEGNO.  
TO VERIFY ON DRAWING.

FA



CODE	UNIT	DIMENSION	MIN ORDER QTY	PCS/BOX	BOX SIZES	WEIGHT	VOLUME
-	NR	H	NR	NR	L X B X H	KG	M <sup>3</sup>

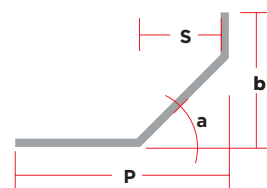
## 4KC SAGOMATO SHAPED

Zoccolo sagomato.  
Disponibile per tutte le altezze.

Shaped plinth.  
Available for all plinth heights.

FATTIBILITÀ DA VERIFICARE  
IN BASE AL DISEGNO.  
TO VERIFY ON DRAWING.

FA



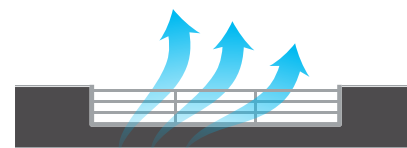
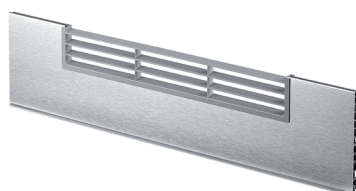
CODE	UNIT	DIMENSION	MIN ORDER QTY	PCS/BOX	BOX SIZES	WEIGHT	VOLUME
-	NR	H	NR	NR	L X B X H	KG	M <sup>3</sup>

## 4KF SPEZZONE FRIGO REFRIGERATOR PLINTH

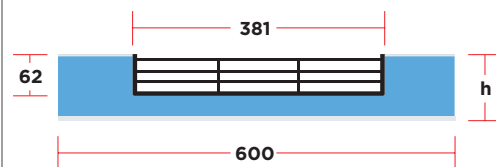
Spezzone zoccolo con nr. 1 Art. 991.  
Disponibile per tutte le altezze.

Refrigerator plinth with nr. 1 Art. 991.  
Available for all plinth heights.

FA



Superficie di aerazione cm<sup>2</sup> 185,5  
Surface aeration cm<sup>2</sup> 185,5



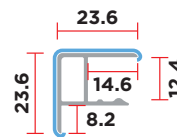
CODE	UNIT	DIMENSION	MIN ORDER QTY	PCS/BOX	BOX SIZES	WEIGHT	VOLUME
4KFXXXXX01.13	NR	H	NR	NR	L X B X H	KG	M <sup>3</sup>
4KFXXXXX01.13	NR	-	40	40	BOX88 620X420X230	40,00	0,060

# 426A

Terminale/angolare a 90° rivestito.

90° foiled corner.

FA



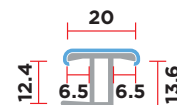
CODE	UNIT	DIMENSION	MIN. ORD.	QTY
		H		NR
426A-77xxxSF	NR	80		100
426A-97xxxSF	NR	100		100
426A-107xxxSF	NR	110		100
426A-117xxxSF	NR	120		100
426A-127xxxSF	NR	130		100
426A-137xxxSF	NR	140		100
426A-147xxxSF	NR	150		100
426A-167xxxSF	NR	170		100
426A-177xxxSF	NR	180		100

# 431

Giunzione lineare rivestita.

Foiled linear junction.

FA



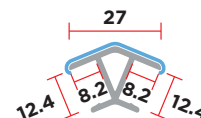
CODE	UNIT	DIMENSION	MIN. ORD.	QTY
		H		NR
431-77-xxxSF	NR	80		100
431-97-xxxSF	NR	100		100
431-107-xxxSF	NR	110		100
431-117-xxxSF	NR	120		100
431-127-xxxSF	NR	130		100
431-137-xxxSF	NR	140		100
431-147-xxxSF	NR	150		100
431-167-xxxSF	NR	170		100
431-177-xxxSF	NR	180		100

# 465A

Angolare a 135° rivestito.

135° foiled corner.

FA



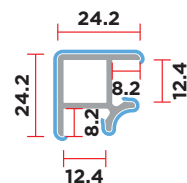
CODE	UNIT	DIMENSION	MIN. ORD.	QTY
		H		NR
465A-77xxxSF	NR	80		100
465A-97xxxSF	NR	100		100
465A-107xxxSF	NR	110		100
465A-117xxxSF	NR	120		100
465A-127xxxSF	NR	130		100
465A-137xxxSF	NR	140		100
465A-147xxxSF	NR	150		100
465A-167xxxSF	NR	170		100
465A-177xxxSF	NR	180		100

## 425C

Terminale/angolare a 90° rivestito **bifacciale**.

90° **two side** foiled corner.

FA



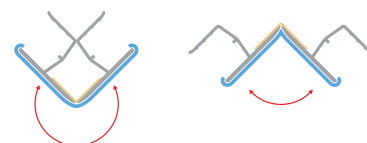
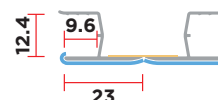
CODE	UNIT	DIMENSION		MIN. ORD.	QTY
		H	NR		
425C-77xxxSF	NR	80	100		
425C-97xxxSF	NR	100	100		
425C-107xxxSF	NR	110	100		
425C-117xxxSF	NR	120	100		
425C-127xxxSF	NR	130	100		
425C-137xxxSF	NR	140	100		
425C-147xxxSF	NR	150	100		
425C-167xxxSF	NR	170	100		
425C-177xxxSF	NR	180	100		

## 1356

Giunzione "multiangolo" in alluminio rivestita.

Foiled aluminum multicorner.

FA



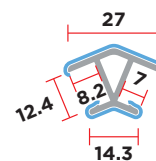
CODE	UNIT	DIMENSION		MIN. ORD.	QTY
		H	NR		
1356-080xxxSF	NR	80	100		
1356-100xxxSF	NR	100	100		
1356-110xxxSF	NR	110	100		
1356-120xxxSF	NR	120	100		
1356-130xxxSF	NR	130	100		
1356-140xxxSF	NR	140	100		
1356-150xxxSF	NR	150	100		
1356-170xxxSF	NR	170	100		
1356-180xxxSF	NR	180	100		

## 465C

Angolare a 135° rivestito **bifacciale**.

135° **two side** foiled corner.

FA



CODE	UNIT	DIMENSION		MIN. ORD.	QTY
		H	NR		
465C-77xxxSF	NR	80	100		
465C-97xxxSF	NR	100	100		
465C-107xxxSF	NR	110	100		
465C-117xxxSF	NR	120	100		
465C-127xxxSF	NR	130	100		
465C-137xxxSF	NR	140	100		
465C-147xxxSF	NR	150	100		
465C-167xxxSF	NR	170	100		
465C-177xxxSF	NR	180	100		