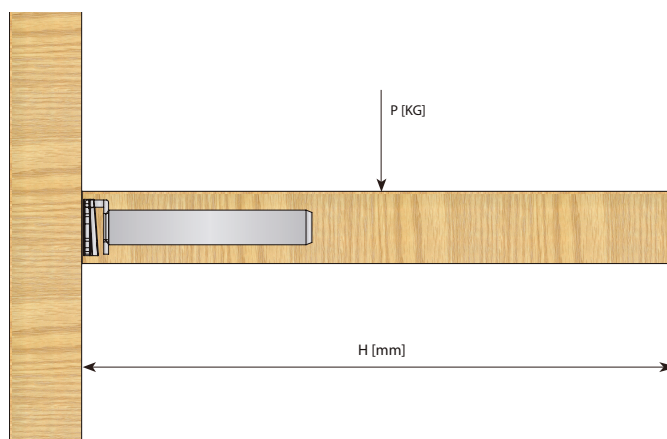


# Maximum loads for TENTI shelf supports

The test levels that TENTI shelf supports meet are achieved with 2 supports for 900 mm. long shelves, and 1 extra support for each 450 mm. we increase the length.

Under these conditions, the following table shows the maximum loads that TENTI shelf supports can endure depending on the shelf depth:



Maximum loads for TENTI shelf supports

TENTI - 3	$P_{MAX} = \frac{3450}{H}$
TENTI - 4	$P_{MAX} = \frac{5750}{H}$
TENTI - 4C	$P_{MAX} = \frac{4600}{H}$
TENTI - 5	$P_{MAX} = \frac{5750}{H}$
TENTI - 6	$P_{MAX} = \frac{3450}{H}$
TENTI - 7	$P_{MAX} = \frac{6900}{H}$
TENTI - 8	$P_{MAX} = \frac{3450}{H}$
TENTI - 9	$P_{MAX} = \frac{6900}{H}$

# TENTI-8

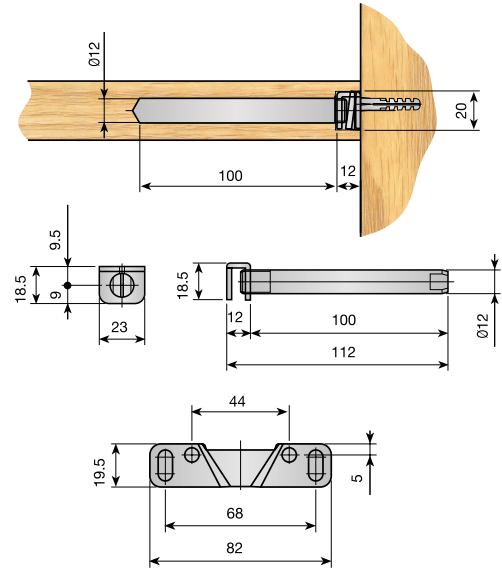
## Shelf Support

■ The most important characteristic of this shelf support is that it is completely concealed and able to hold heavy loads. Additionally, it allows the shelf to be adjusted in any direction.

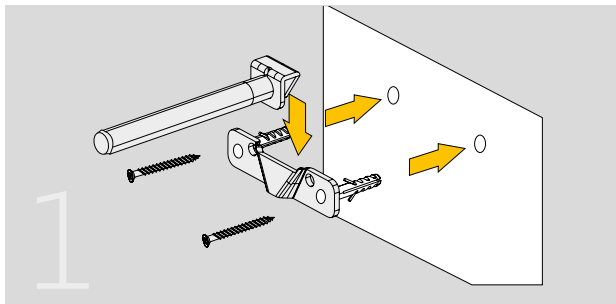
TENTI-8 shelf support.

			
	632.500.105	100	

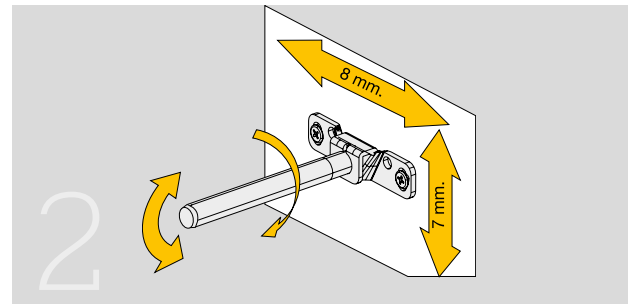
Packed in boxes of 100 bags. Each bag contains 1 support, 4 plastic wall plugs Ø6x 30 and 4 screws Ø4.5X35.



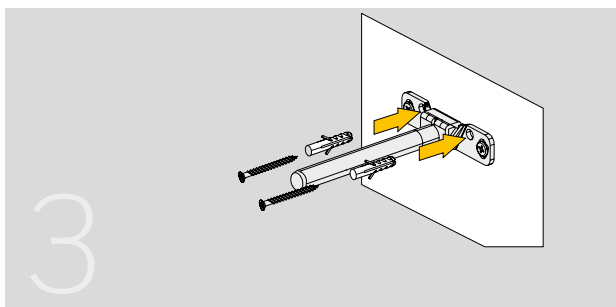
## Assembly TENTI-8



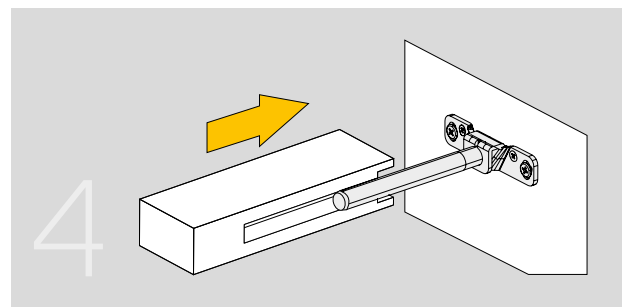
Place the support on the wall with the supplied wall plugs and screws and place the rod on the support.



Oval holes allow accurate levelling. It can be horizontally adjusted by moving the rod along the support. Furthermore, the gradient may easily be adjusted by just turning the rod.



Fix the support in its definitive position with The other two wall plugs and screws to avoid the shelf displacing the levelled position.



Finally, place the shelf in position. This can subsequently be removed whenever necessary to carry out further adjustments.