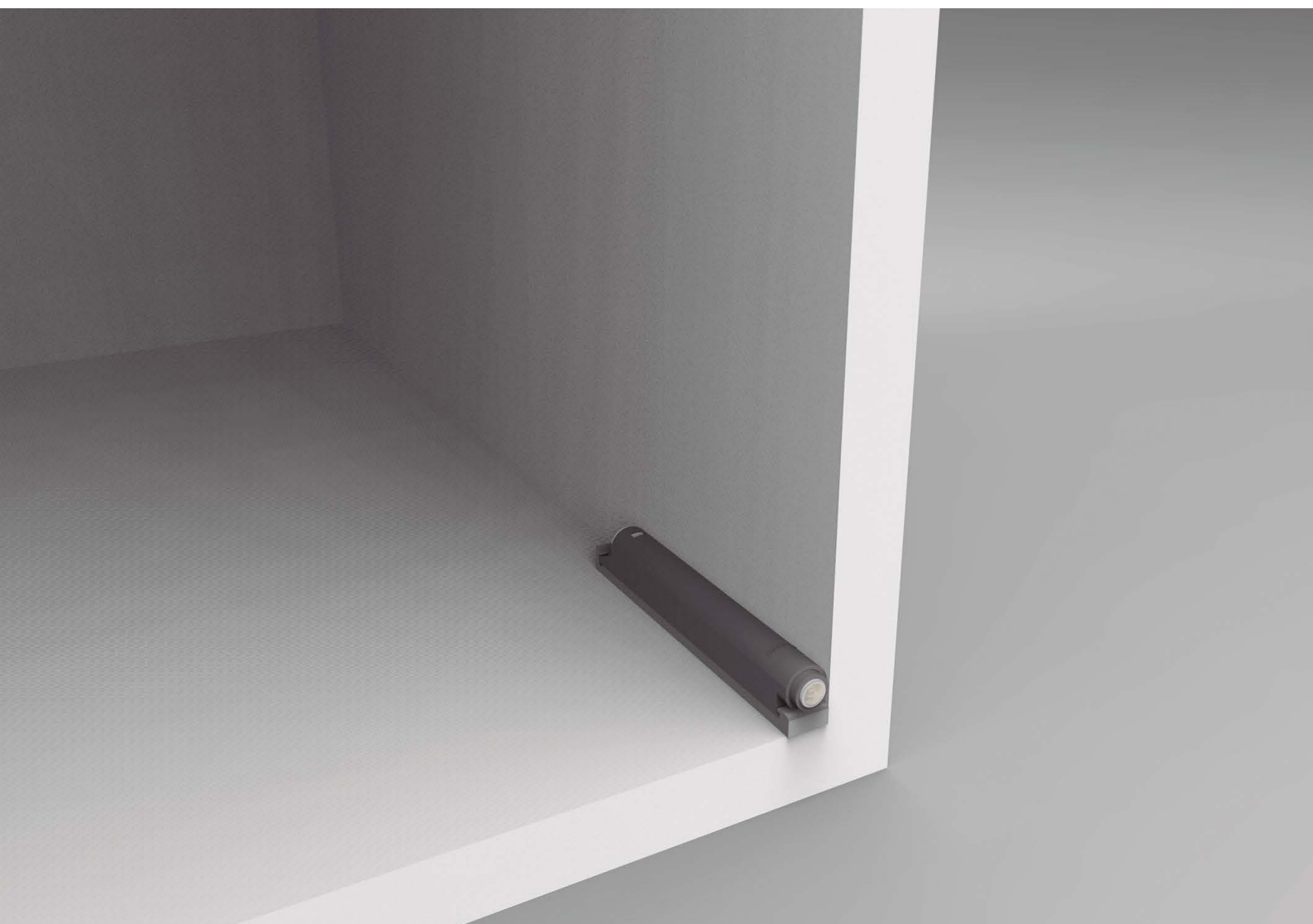


# IMPULSE

## Push-latch

- > Opening and closing system for doors without handles, available in a wide range of versions and finishes, to adapt to all needs.
- > The embedded version is offered with two different opening forces, depending on the desired effect or the type of furniture.
- > The magnetic option, together with our reverse-opening MESUCO 143 hinge, enables the door to be perfectly closed.
- > By means of a simple push, IMPULSE allows for the complete opening of doors and drawers.





# IMPULSE

## Push-latch

			Hinges Standard Opening	Hinges MESUCO 143 Reverse Opening	Runners Gravity Self-closing
Embedded	Magnetic	20mm	—	✓	—
		40mm	—	✓	—
	With stop	20mm	✓	✗	✓
		40mm	✓	✗	✓
Lay-on	Magnetic	20mm	—	✓	—
		40mm	—	✓	—
	With stop	20mm	✓	✗	✓
		40mm	✓	✗	✓

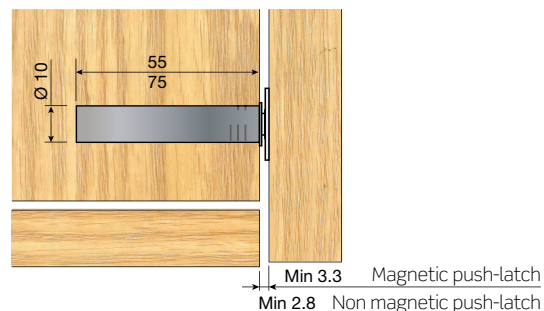
The push-latch is incompatible with mechanical closing runners.

pp.


<b>1</b>	<b>PUSH-LATCH SERIES AND TECHNICAL DATA</b>	12
■	Embedded push-latch Ø10	12
■	Base plate for embedded push-latch Ø10	13
■	Lay-on push-latch	14
■	Base plate for lay-on push-latch	15

**1 PUSH-LATCH SERIES**

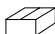
**Embedded Ø10**



**Magnetic push-latch Ø10 with adhesive stop (1.5 Kg. leverage)**

Ejection distance: 20 mm		Ejection distance: 40 mm		
Body length:	55 mm (short)	Body length:	75 mm (long)	
White RAL 9001	215.318.003	215.338.001		
Grey RAL 7035	215.318.084	215.338.082	100	
Grey RAL 7043	215.318.316	215.338.314		


**Magnetic push-latch Ø10 with adhesive stop (2.25 Kg. leverage)**

Ejection distance: 20 mm		Ejection distance: 40 mm		
Body length:	55 mm (short)	Body length:	75 mm (long)	
White RAL 9001	215.618.001	215.938.004		
Grey RAL 7035	215.618.082	215.938.085	100	
Grey RAL 7043	215.618.314	215.938.310		


Each reference consists of 1 fitting and an adhesive closing stop.



**Push-latch Ø10 (1.5 Kg. leverage)**


Ejection distance: 20 mm		Ejection distance: 40 mm		
Body length:	55 mm (short)	Body length:	75 mm (long)	
White RAL 9001	215.218.006	215.238.004		
Grey RAL 7035	215.218.080	215.238.085	100	
Grey RAL 7043	215.218.312	215.238.310		

**Push-latch Ø10 (2.25 Kg. leverage)**


Ejection distance: 20 mm		Ejection distance: 40 mm		
Body length:	55 mm (short)	Body length:	75 mm (long)	
White RAL 9001	215.518.004	215.838.000		
Grey RAL 7035	215.518.085	215.838.081	100	
Grey RAL 7043	215.518.310	215.838.313		



**Magnetic push-latch Ø10 with screw-fixed stop (1.5 Kg. leverage)**

Ejection distance: 20 mm		Ejection distance: 40 mm		
Body length:	55 mm (short)	Body length:	75 mm (long)	
White RAL 9001	215.418.000	215.438.005		
Grey RAL 7035	215.418.081	215.438.086	100	
Grey RAL 7043	215.418.313	215.438.311		

**Magnetic push-latch Ø10 with screw-fixed stop (2.25 Kg. leverage)**

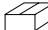
Ejection distance: 20 mm		Ejection distance: 40 mm		
Body length:	55 mm (short)	Body length:	75 mm (long)	
White RAL 9001	215.718.005	216.038.001		
Grey RAL 7035	215.718.086	216.038.082	100	
Grey RAL 7043	215.718.311	216.038.314		

Each reference consists of 1 fitting, 1 end plate and Ø3x12 screw.

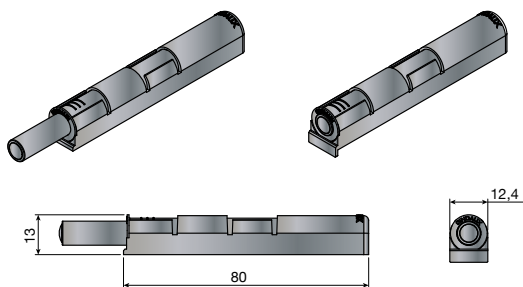


■ Base plate for embedded push-latch Ø10

Screw-fix base plate.

		Without stop	With stop	
White	RAL 9001	214.500.005	214.600.002	100
Grey	RAL 7035	214.500.086	214.600.083	
Grey	RAL 7043	214.500.145	214.600.142	

Screw Ø3x12 pozi, ref. 982.112.036, recommended.



Assembly

Push-latch Ø10 short

Min. 55

Push-latch Ø10 long

Min. 75

Fixing stop

1

32

10 32

2.1

2.2

Regulation

+ 4mm

■ Lay-on

**Magnetic push-latch with adhesive stop (1.5 Kg. leverage)**

Length of extension		20mm.	40mm.	
White	RAL 9001	217.020.005	217.040.003	100
Black	RAL 9005	217.020.020	217.040.025	
Grey	RAL 7040	217.020.311	217.040.316	

Each reference consists of 1 fitting and an adhesive closing stop.

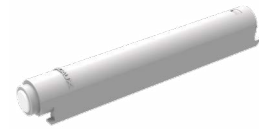
**Push-latch (1.5 Kg. leverage)**

Length of extension		20mm.	40mm.	
White	RAL 9001	217.120.002	217.140.000	100
Black	RAL 9005	217.120.024	217.140.022	
Grey	RAL 7040	217.120.315	217.140.313	

**Magnetic push-latch with screw-fixed stop (1.5 Kg. leverage)**

Length of extension		20mm.	40mm.	
White	RAL 9001	217.220.006	217.240.004	100
Black	RAL 9005	217.220.021	217.240.026	
Grey	RAL 7040	217.220.312	217.240.310	

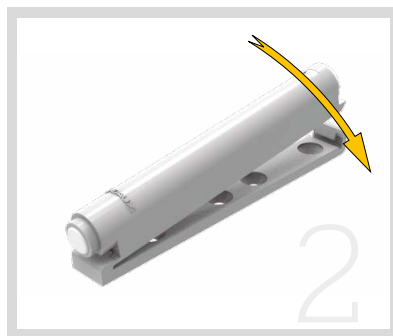
Each reference consists of 1 fitting, 1 end plate with Ø3x12 screw.



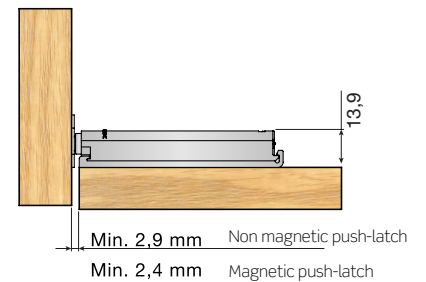
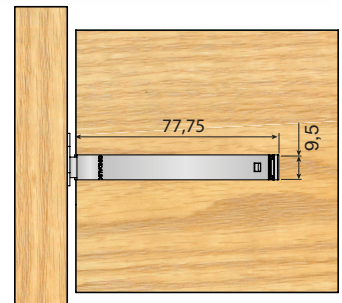
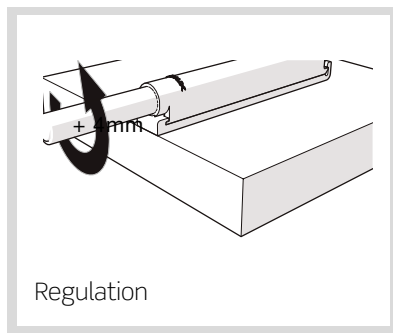
■ Mounting plate fitting



Clip the body to the front of the base plate.




Press the body onto the back of the base plate until fixed.




■ Base plate for lay-on push-latch

Screw-fix base plate with stop.

				
White	RAL 9001	214.700.006		
Black	RAL 9005	214.700.021	100	
Grey	RAL 7040	214.700.312		

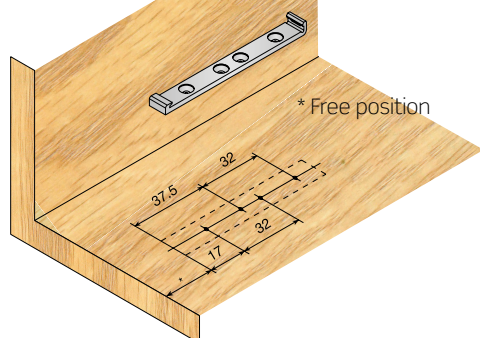


Screw-fix base plate without stop.

				
White	RAL 9001	214.800.003		
Black	RAL 9005	214.800.025	100	
Grey	RAL 7040	214.800.316		



Screw-fix base plate without stop



Screw-fix base plate with stop

