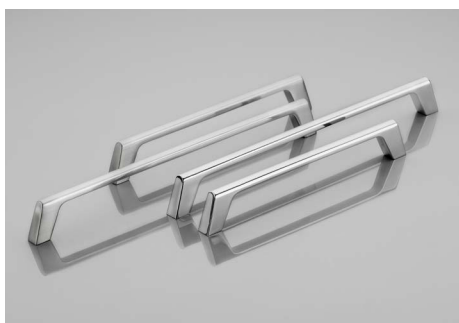


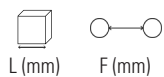


ASAS E CABIDES CASATREND  
CASATREND

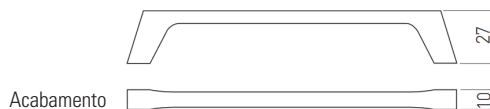


### Asa UZ-G2

**GTV.**



L (mm)	F (mm)	Cromado	Inox	Preto mate
172	160	UZ-G2-160-01	UZ-G2-160-06	UZ-G2-160-20M
236	224	UZ-G2-224-01	UZ-G2-224-06	UZ-G2-224-20M



Acabamento

### Asa Z – A100



Acabamento

F (mm)	Cromado brilho	Níquel satinado
96-128	A100.96CR	A100.96NS
160-192	A100.160CR	A100.160NS
288-320	A100.288CR	A100.288NS

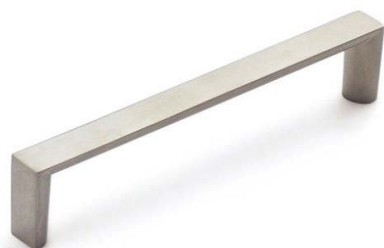
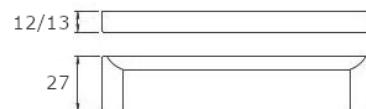


### Asa Z – W2256



Acab.  
Níquel  
satinado

L (mm)	F (mm)	Acab.
135	128	W2256.128NS
168	160	W2256.160NS
200	192	W2256.192NS

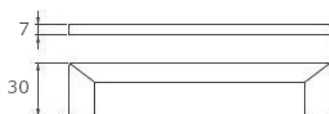


### Asa Z – W23260



Acab.  
Níquel  
satinado

F (mm)	Acab.
128	W23260.128NS
160	W23260.160NS
192	W23260.192NS



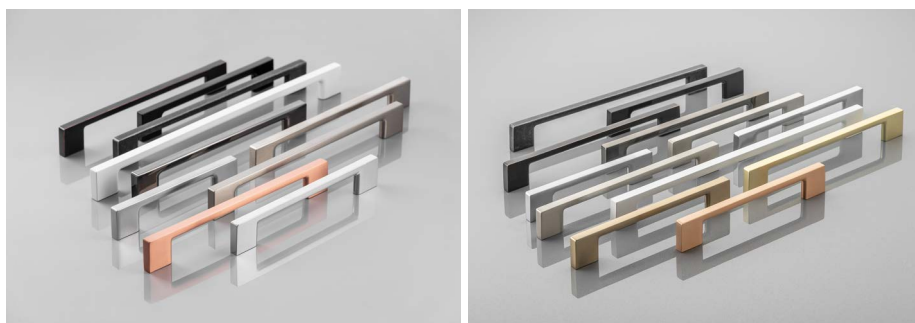
### Asa Z – H3064



Acab.  
Níquel  
satinado

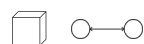
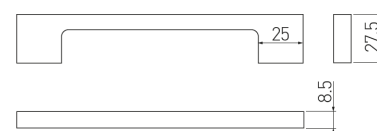
F (mm)	Acab.
128	H3064.128NS
160	H3064.160NS
192	H3064.192NS
320	H3064.320NS

## Asas Zamak



## Asa UZ-819

GTV®



L (mm)	F (mm)	Acabamento										
		Cromado	Níquel satinado	Alumínio	Inox	Prata envelhecida	Branco	Latão dourado	Preto	Cromado preto	Cobre envelhecido	Cobre
129	96	xx096-01	xx096-02	xx096-05	xx096-06	xx096-07	xx096-10	—	xx096-20	xx096-12	xx096-14	—
161	128	xx128-01	xx128-02	xx128-05	xx128-06	xx128-07	xx128-10	xx128-16	xx128-20	xx128-12	xx128-14	xx128-15
193	160	xx160-01	xx160-02	xx160-05	xx160-06	xx160-07	xx160-10	xx160-16	xx160-20	xx160-12	xx160-14	xx160-15
225	192	xx192-01	xx192-02	xx192-05	xx192-06	xx192-07	xx192-10	xx192-16	xx192-20	xx192-12	xx192-14	xx192-15
289	256	xx256-01	xx256-02	xx256-05	xx256-06	xx256-07	xx256-10	xx256-16	xx256-20	xx256-12	xx256-14	xx256-15
353	320	xx320-01	xx320-02	xx320-05	xx320-06	xx320-07	xx320-10	—	xx320-20	xx320-12	xx320-14	—

Para obter o código do artigo, substituir "xx" por "UZ-819".

## Asa Z – H4062



F (mm)

Acab.  
Níquel  
satinado

128	H4062.128NS
160	H4062.160NS
192	H4062.192NS
320	H4062.320NS

## Asa Capri

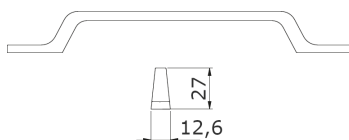
GTV®



L (mm)	F (mm)	Acabamento					Preto mate
		Cromado	Níquel Satinado	Alumínio	Inox	Alumínio	
138	128	UZ-CAPRI-128-01	UZ-CAPRI-128-02	UZ-CAPRI-128-05	UZ-CAPRI-128-06	UZ-CAPRI-128-20M	
170	160	UZ-CAPRI-160-01	UZ-CAPRI-160-02	UZ-CAPRI-160-05	UZ-CAPRI-160-06	UZ-CAPRI-160-20M	
202	192	UZ-CAPRI-192-01	UZ-CAPRI-192-02	UZ-CAPRI-192-05	UZ-CAPRI-192-06	UZ-CAPRI-192-20M	
266	256	UZ-CAPRI-256-01	UZ-CAPRI-256-02	UZ-CAPRI-256-05	UZ-CAPRI-256-06	UZ-CAPRI-256-20M	
330	320	UZ-CAPRI-320-01	UZ-CAPRI-320-02	UZ-CAPRI-320-05	UZ-CAPRI-320-06	—	

## Asa Flavio

**GTV**

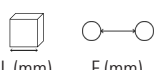


L (mm)	F (mm)	Acabamento			
		Cromado	Inox	Latão dourado	Preto Mate
161	96	UZ-FLAVIO-96-01	UZ-FLAVIO-96-06	UZ-FLAVIO-96-16	UZ-FLAVIO-96-20M
193	128	UZ-FLAVIO-128-01	UZ-FLAVIO-128-06	UZ-FLAVIO-128-16	UZ-FLAVIO-128-20M
225	160	UZ-FLAVIO-160-01	UZ-FLAVIO-160-06	UZ-FLAVIO-160-16	UZ-FLAVIO-160-20M

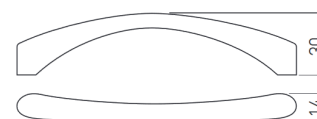


## Asa Cleo

**GTV**



L (mm)	F (mm)	Acabamento	
		Cromado	Inox
137	128	UZ-CLEO-128-01	UZ-CLEO-128-06
169	160	UZ-CLEO-160-01	UZ-CLEO-160-06
201	192	UZ-CLEO-192-01	UZ-CLEO-192-06



\* O puxador foi descatalogado.

## Asa Bagio

**GTV**



L (mm)	F (mm)	Acabamento			
		Cromado	Latão envelhecido	Alumínio	Inox
136	128	UZ-BAGIO-128-01	UZ-BAGIO-128-04	UZ-BAGIO-128-05	UZ-BAGIO-128-06
168	160	UZ-BAGIO-160-01	UZ-BAGIO-160-04	UZ-BAGIO-160-05	UZ-BAGIO-160-06
200	192	UZ-BAGIO-192-01	UZ-BAGIO-192-04	UZ-BAGIO-192-05	UZ-BAGIO-192-06
328	320	UZ-BAGIO-320-01	UZ-BAGIO-320-04	UZ-BAGIO-320-05	UZ-BAGIO-320-06

L (mm)	F (mm)	Prata envelhecida	Titânio escovado	Cobre	Preto mate	Champanhe
136	128	UZ-BAGIO-128-07	UZ-BAGIO-128-11	UZ-BAGIO-128-15	UZ-BAGIO-128-20M	UZ-BAGIO-128-90
168	160	UZ-BAGIO-160-07	UZ-BAGIO-160-11	UZ-BAGIO-160-15	UZ-BAGIO-160-20M	UZ-BAGIO-160-90
200	192	UZ-BAGIO-192-07	UZ-BAGIO-192-11	UZ-BAGIO-192-15	UZ-BAGIO-192-20M	UZ-BAGIO-192-90
328	320	UZ-BAGIO-320-07	UZ-BAGIO-320-11	UZ-BAGIO-320-15	UZ-BAGIO-320-20M	UZ-BAGIO-320-90

## Asas Zamak

## Asa Z – J512



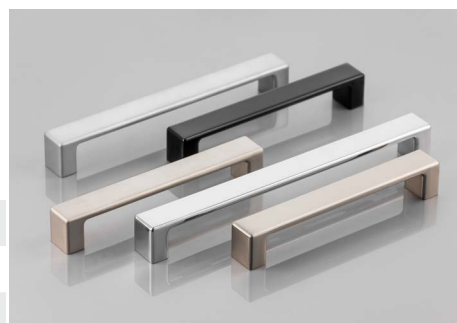
F (mm)	Acab.
160	Níquel satinado
192	Níquel satinado

## Asa Modena

GTV®



L (mm)	F (mm)	Acabamento			
		Cromado	Alumínio	Inox	Preto mate
140	128	UZ-MODEN-128-01	UZ-MODEN-128-05	UZ-MODEN-128-06	UZ-MODEN-128-20M
172	160	UZ-MODEN-160-01	UZ-MODEN-160-05	UZ-MODEN-160-06	UZ-MODEN-160-20M
204	192	UZ-MODEN-192-01	UZ-MODEN-192-05	UZ-MODEN-192-06	UZ-MODEN-192-20M



## Asa Z – F660



F (mm)	Acab.
128	Cromado mate
160	Cromado mate
192	Cromado mate
256	Cromado mate

## Asa Z – F150

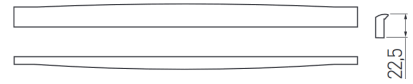
F (mm)	Acab.
96	Níquel satinado
128	Níquel satinado
160	Níquel satinado
192	Níquel satinado
224	Níquel satinado
320	Níquel satinado





### Asa Katania

**GTV**



L (mm)

F (mm)

Acabamento

Cromado

Cromado preto

334

320

UZ-KATAN-320-01

UZ-KATAN-320-12

### Asa Doppio

**GTV**



Acab.

L (mm)

F (mm)

Cromado / Alumínio

256

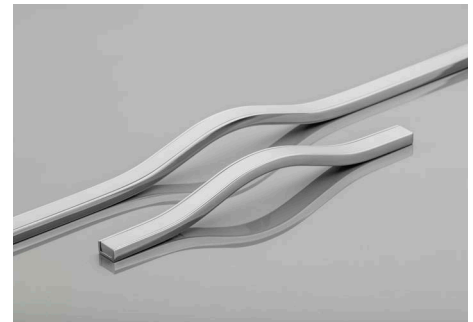
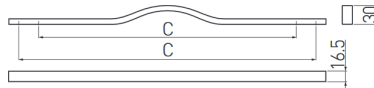
192/224

UA-DOPPIO192-01

512

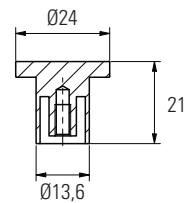
416/480

UA-DOPPIO416-01



### Puxador Spot

**GTV**



Acabamento

Aço escovado

Dourado escovado

Preto mate

GZ-SPOT-1-06

GZ-SPOT-1-18

GZ-SPOT-1-20M

### Puxador Dune

**GTV**

Aço escovado

Acabamento

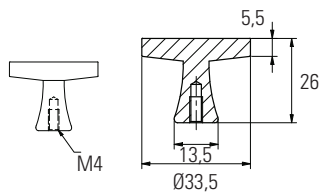
Dourado

Preto mate

GZ-DUNE-1-06

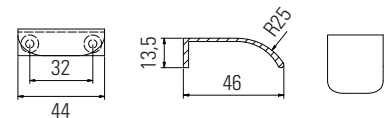
GZ-DUNE-1-16

GZ-DUNE-1-20M



### Puxador Fiord

**GTV**



Acabamento

Alumínio

Aço escovado

Dourado escovado

Preto mate

UZ-FIORD-32-05

UZ-FIORD-32-06

UZ-FIORD-32-18

UZ-FIORD-32-20M



## Asas em Alumínio

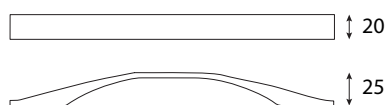
## Asa AL – W4523



L (mm)	Acab.	
	Alumínio	
160	W4523.160A	
192	W4523.192A	
224	W4523.224A	
320	W4523.320A	
512	W4523.512A	

## Asa AL – W4704

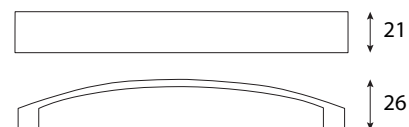
L (mm)	F (mm)	Acab.
		BSN
197	128	W4704.128
226	160	W4704.160



## Asa AL – W44326



F (mm)	Acab.	
	BSN	
160	W44326.160	
192	W44326.192	



## Asa AL – A220B

Vista de 20 mm.

F (mm)	Acab.	
	Alumínio	
160	A220B.160A	
192	A220B.192A	



## Asa AL – A320



L (mm)	Acabamento	
	Alumínio	Cromado brilho
32	A320.32A	A320.32CR
64	A320.64A	A320.64CR
96	A320.96A	A320.96CR
128	A320.128A	A320.128CR
160	A320.160A	A320.160CR

## Asa AL – F780

L (mm)	Acab. Anonizado natural
160	F780.160A
192	F780.192A
256	F780.256A
320	F780.320A



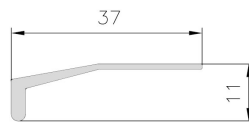
## Asa AL – F770

L (mm)	Acab. Cromado brilho
128	F770.128CR
160	F770.160CR
192	F770.192CR
224	F770.224CR
256	F770.256CR
288	F770.288CR
320	F770.320CR

## Asa 09 Autocolante

Topos acabados.

L (mm)	Acabamento	
	Anonizado natural	Anonizado brilho
90	09.90A	09.90AB
150	09.150A	09.150AB



## Asa 73

Topos acabados.

L (mm)	Acab. Anonizado natural
150	073.150A

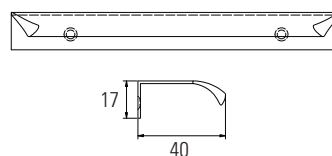


## Asas em Alumínio

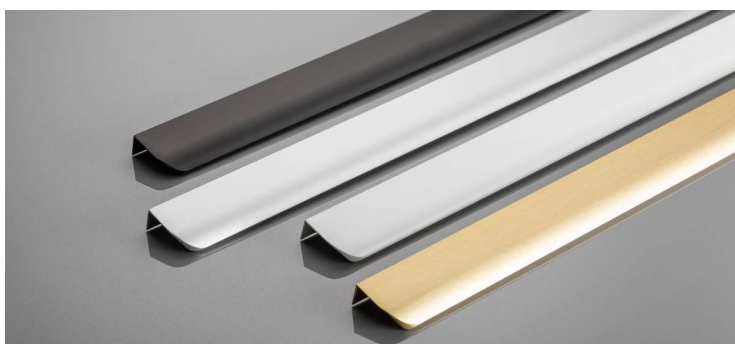


## Asa Hexa

GTV®

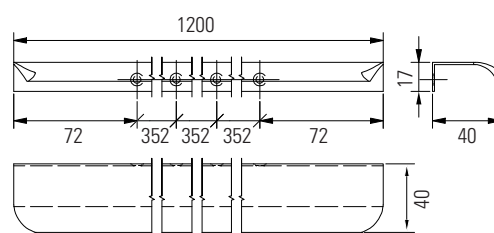


L (mm)	F (mm)	Acabamento					
		Cromado	Alumínio	Branco	Dourado escovado	Preto mate	Dourado brilhante escovado
50	32	UA-HEXA-32-01	UA-HEXA-32-05	UA-HEXA-32-10M	UA-HEXA-32-18	UA-HEXA-32-20M	UA-HEXA-32-22
150	96	UA-HEXA-96-01	UA-HEXA-96-05	UA-HEXA-96-10M	UA-HEXA-96-18	UA-HEXA-96-20M	UA-HEXA-96-22
190	160	UA-HEXA-160-01	UA-HEXA-160-05	UA-HEXA-160-10M	—	UA-HEXA-160-20M	UA-HEXA-160-22
225	192	UA-HEXA-192-01	UA-HEXA-192-05	UA-HEXA-192-10M	UA-HEXA-192-18	UA-HEXA-192-20M	UA-HEXA-192-22
290	256	UA-HEXA-256-01	UA-HEXA-256-05	UA-HEXA-256-10M	—	UA-HEXA-256-20M	UA-HEXA-256-22
360	320	UA-HEXA-320-01	UA-HEXA-320-05	UA-HEXA-320-10M	—	UA-HEXA-320-20M	UA-HEXA-320-22

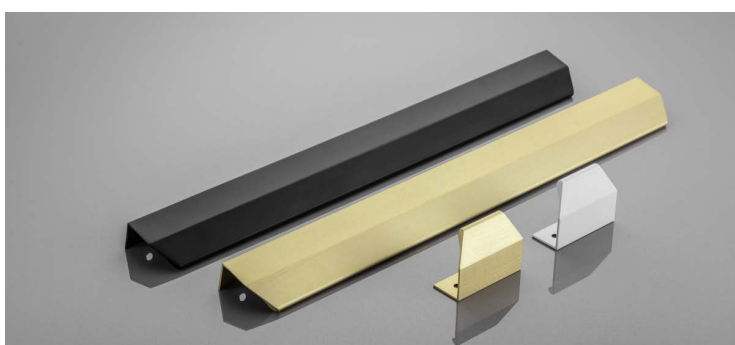


## Asa Hexa Long

GTV®

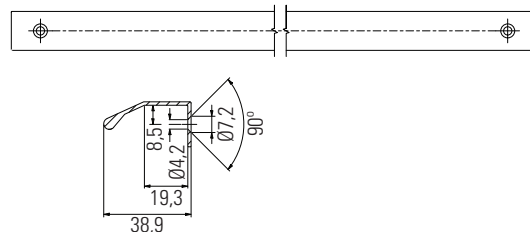


L (mm)	F (mm)	Acabamento			
		Alumínio	Branco	Preto mate	Dourado brilhante escovado
1200	—	UA-HEXA-1200-05	UA-HEXA-1200-10M	UA-HEXA-1200-20M	UA-HEXA-1200-22

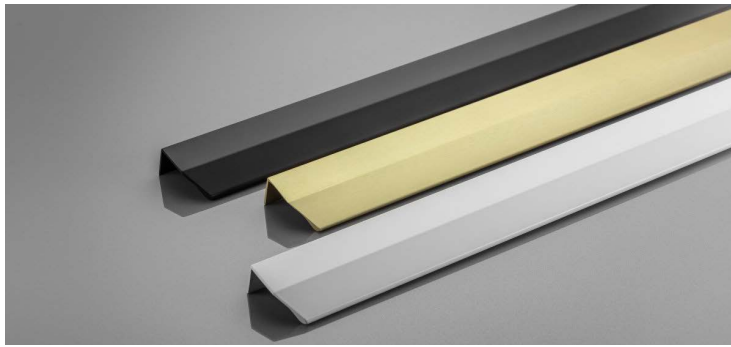


## Asa Trex-Cross

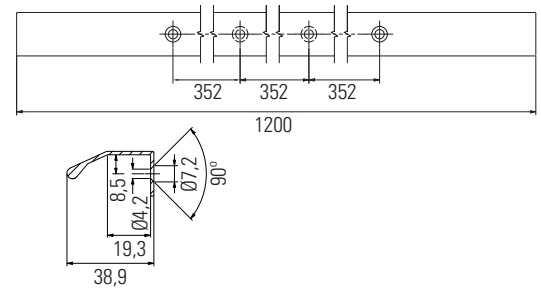
GTV®



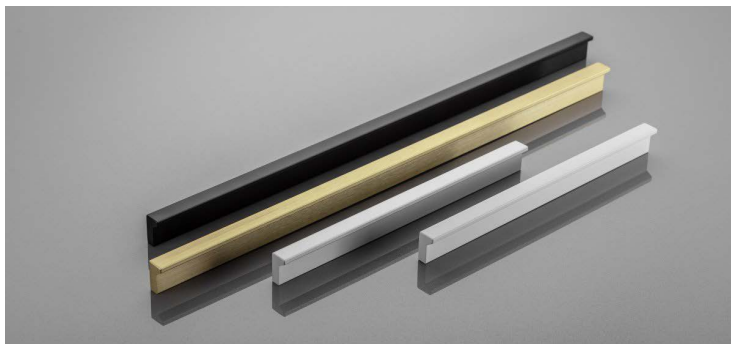
L (mm)	F (mm)	Acabamento		
		Preto mate	Branco mate	Dourado brilhante escovado
50	32	UA-TREX-CROSS-32-20M	UA-TREX-CROSS-32-10M	UA-TREX-CROSS-32-22
350	320	UA-TREX-CROSS-320-20M	UA-TREX-CROSS-320-10M	UA-TREX-CROSS-320-22



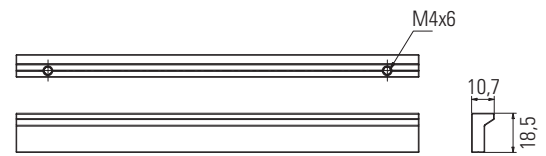
**Asa Trex-Cross Long** **GTV**



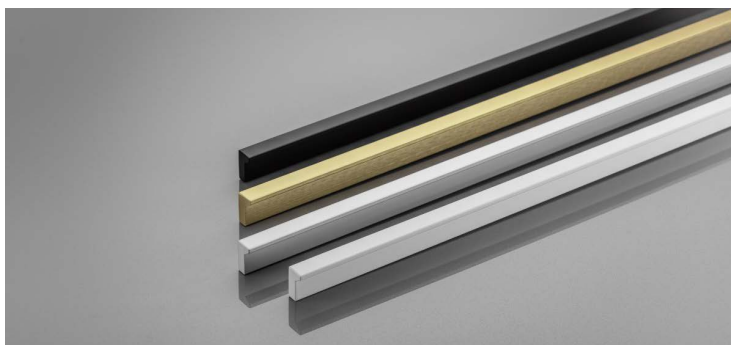
		Acabamento		
L (mm)	F (mm)	Preto mate	Branco mate	Dourado brilhante escovado
1200	—	UA-TREX-CROSS-1200-20M	UA-TREX-CROSS-1200-10M	UA-TREX-CROSS-1200-22



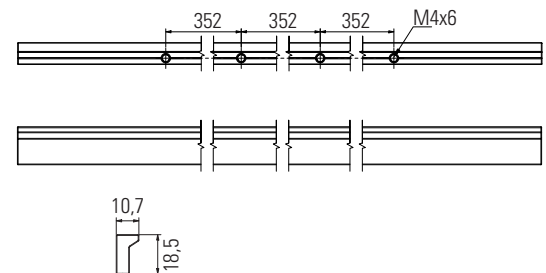
**Asa Pillar** **GTV**



		Acabamento			
L (mm)	F (mm)	Alumínio	Preto mate	Branco mate	Dourado brilhante escovado
50	32	UA-PILLAR-160-05	UA-PILLAR-160-20M	UA-PILLAR-160-10M	UA-PILLAR-160-22
350	320	UA-PILLAR-320-05	UA-PILLAR-320-20M	UA-PILLAR-320-10M	UA-PILLAR-320-22

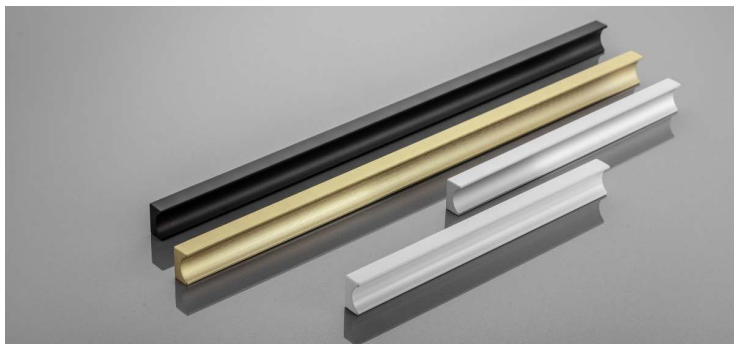


**Asa Pillar Long** **GTV**

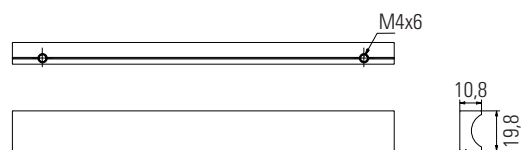


		Acabamento			
L (mm)	F (mm)	Alumínio	Preto mate	Branco mate	Dourado brilhante escovado
1200	—	UA-PILLAR-1200-05	UA-PILLAR-1200-20M	UA-PILLAR-1200-10M	UA-PILLAR-1200-22

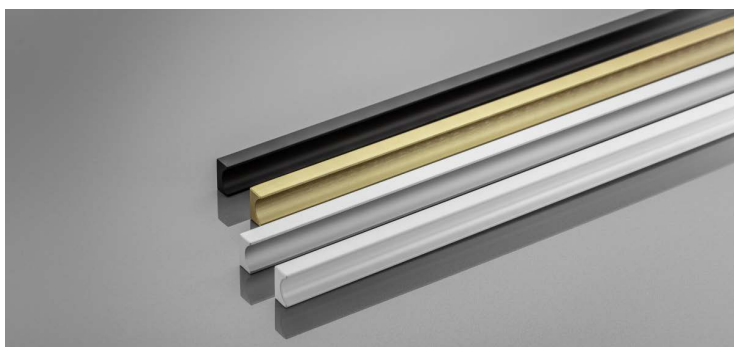
Asas em Alumínio



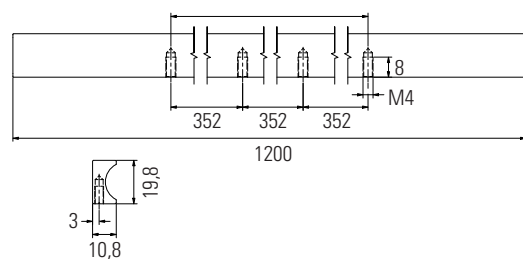
Asa Groove GTV®



L (mm)	F (mm)	Acabamento			
		Alumínio	Preto mate	Branco mate	Dourado brilhante escovado
160	190	UA-GROOVE-160-05	UA-GROOVE-160-20M	UA-GROOVE-160-10M	UA-GROOVE-160-22
320	360	UA-GROOVE-320-05	UA-GROOVE-320-20M	UA-GROOVE-320-10M	UA-GROOVE-320-22



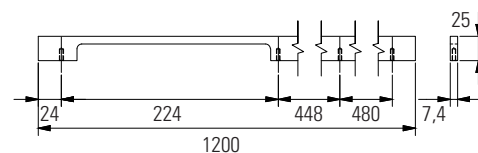
Asa Groove Long GTV®



L (mm)	F (mm)	Acabamento			
		Alumínio	Preto mate	Branco mate	Dourado brilhante escovado
1200	—	UA-GROOVE-1200-05	UA-GROOVE-1200-20M	UA-GROOVE-1200-10M	UA-GROOVE-1200-22



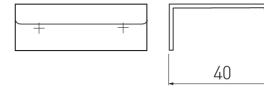
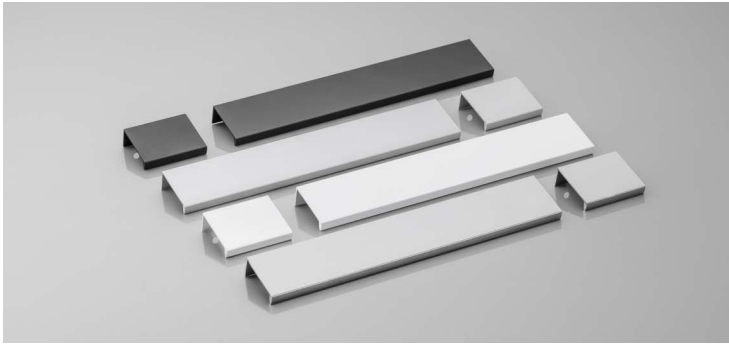
Asa Extend GTV®



L (mm)	F (mm)	Acabamento		
		Branco	Dourado escovado brilhante	Preto mate
1200	224	UA-EXTEND-1200-10M	UA-EXTEND-1200-22	UA-EXTEND-1200-20M

Asa Hexi

GTV

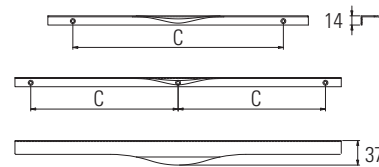
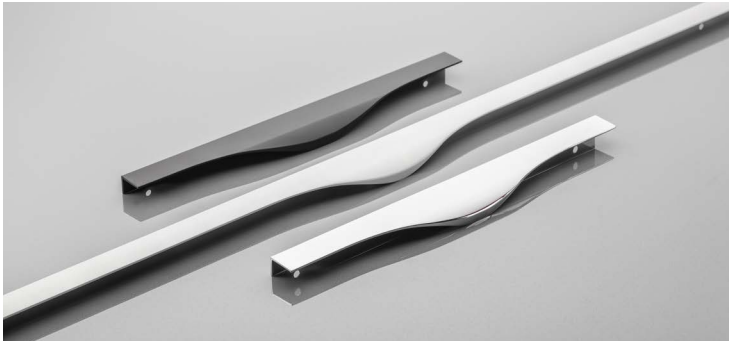


Acabamento

L (mm)	F (mm)	Cromado	Alumínio	Branco mate	Dourado escovado	Preto mate	Antracite
50	32	UA-HEXI-01	UA-HEXI-05	UA-HEXI-10M	UA-HEXI-18	UA-HEXI-20M	UA-HEXI-60
150	96	UA-HEXI96-01	UA-HEXI96-05	UA-HEXI96-10M	UA-HEXI96-18	UA-HEXI96-20M	UA-HEXI96-60
190	160	UA-HEXI160-01	UA-HEXI160-05	UA-HEXI160-10M	UA-HEXI160-18	UA-HEXI160-20M	UA-HEXI160-60
225	192	UA-HEXI192-01	UA-HEXI192-05	UA-HEXI192-10M	UA-HEXI192-18	UA-HEXI192-20M	UA-HEXI192-60
290	256	UA-HEXI256-01	UA-HEXI256-05	UA-HEXI256-10M	UA-HEXI256-18	UA-HEXI256-20M	UA-HEXI256-60
360	320	UA-HEXI320-01	UA-HEXI320-05	UA-HEXI320-10M	UA-HEXI320-18	UA-HEXI320-20M	UA-HEXI320-60
3500	-	-	UA-HEXI-3500-05	-	-	-	-

Asa Picado

GTV

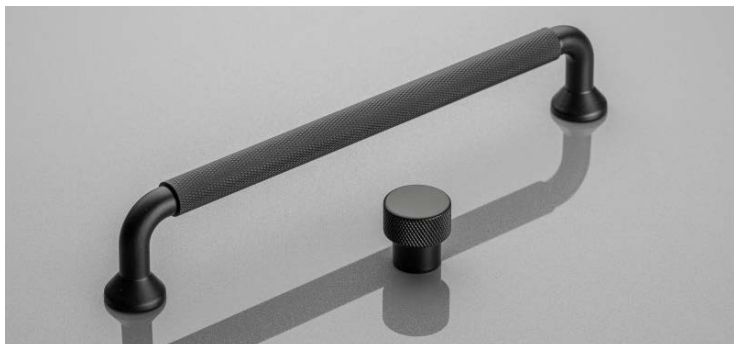


Acabamento

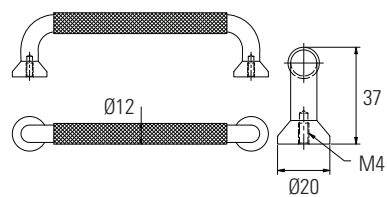
L (mm)	F (mm)	Preto mate	Cromado	Alumínio	Dourado escovado
296	256	UA-PICADO-256-296-20M	UA-PICADO-256-296-01	UA-PICADO-256-296-05	UA-PICADO-256-296-18
396	320	UA-PICADO-320-396-20M	UA-PICADO-320-396-01	UA-PICADO-320-396-05	UA-PICADO-320-396-18
496	2 x 224 *	UA-PICADO-224-496-20M	UA-PICADO-224-496-01	UA-PICADO-224-496-05	UA-PICADO-224-496-18
596	2 x 256 *	UA-PICADO-256-596-20M	UA-PICADO-256-596-01	UA-PICADO-256-596-05	UA-PICADO-256-596-18
796	2 x 352 *	UA-PICADO-352-796-20M	UA-PICADO-352-796-01	UA-PICADO-352-796-05	UA-PICADO-352-796-18



\* Montado com 3 parafusos.

## Asas em Alumínio



Asa Structure GTV®



 L (mm)   
  F (mm)   
 Acabamento  
 Preto mate

147    128    UA-STRUCTURE-128-20M

212    192    UA-STRUCTURE-192-20M

### Puxador Structure

GA-STRUCTURE-1-20M

## Asa Inox de Ø 10 e Ø 12 mm



L (mm)	F (mm)	Diâmetro	
		10 mm	12 mm
160	96	AT10.96I	AT12.96I
192	128	AT10.128I	AT12.128I
224	160	AT10.160I	AT12.160I
256	192	AT10.192I	AT12.192I
288	224	AT10.224I	AT12.224I
320	256	AT10.256I	AT12.256I
352	288	AT10.288I	AT12.288I
384	320	AT10.320I	AT12.320I
416	352	AT10.352I	AT12.352I
456	392	AT10.392I	AT12.392I
556	492	AT10.492I	AT12.492I
656	592	AT10.592I	AT12.592I
756	692	AT10.692I	AT12.692I
856	792	T.10.792I	AT12.792I
1256	1192	–	AT12.1192I
1496	1392	–	AT12.1392I

## Asa Tubo Inox de Ø 10 e Ø 12 mm (OCA)

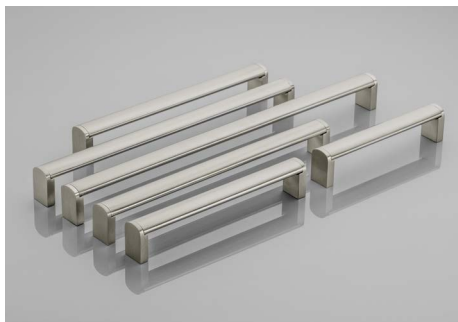
L (mm)	F (mm)	Diâmetro	
		10 mm	12 mm
160	96	ATO10.96I	–
192	128	ATO10.128I	ATO12.128I
224	160	ATO10.160I	ATO12.160I
256	192	ATO10.192I	ATO12.192I



## Asa Inox Quadrada 12×12

F (mm)	Código
96	Q1212.96I
128	Q1212.128I
160	Q1212.160I
192	Q1212.192I
224	Q1212.224I
320	Q1212.320I


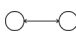
## Asas em Inox

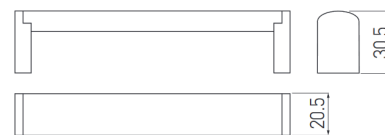


## Asa Inox 682

GTV®

Barra em inox.  
 Topos em zamak com acabamento em inox.

 L (mm)	 F (mm)	Código Inox
136	128	UZ-682128-06
170	160	UZ-682160-06
209	192	UZ-682192-06
232	224	UZ-682224-06
266	256	UZ-682256-06
329	320	UZ-682320-06
425	416	UZ-682416-06
489	480	UZ-682480-06



## Asa U Inox de Ø 10 mm



F (mm)	Código
96	U10.96I
128	U10.128I
160	U10.160I
192	U10.192I
224	U10.224I



## Asa Ponte Inox de Ø 10 mm



F (mm)	Código
96	P10.96I
128	P10.128I
160	P10.160I
192	P10.192I





## Puxador Unha Inox



D (mm) Código

12 PU12I

15 PU15I

18 PU18I

20 PU20I

25 PU25I



## Puxador Quadrado Inox



L (mm) Código

15 PQ15I

19 PQ19I

## Asas Eureka

## Asa 1447

EUREKA



L (mm)

F (mm)

Acab.  
Cromado  
brilho

217

192

1447.160CR



## Asa 1300

EUREKA



L (mm)

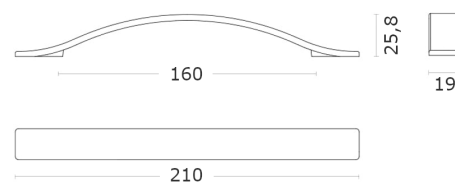
F (mm)

Acab.  
Cromado  
brilho

210

160

1300.160CR



## Asa 7001

EUREKA



Acab.

F (mm)

Níquel mate

160

7001.160NM



## Asa 7033

EUREKA



Acabamento

F (mm)

Cromado  
brilho

Níquel mate

192

7033.192CR

7033.192NM

## Asa 7082

EUREKA



Acab.

F (mm)

Níquel mate

160

7082.160NM



## Asa 7080



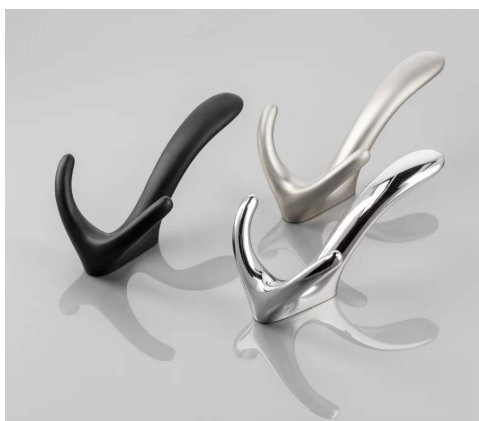
Acab.

F (mm) Niquel mate

160 7080.160NM



## Cabides



## Cabide Córdoba



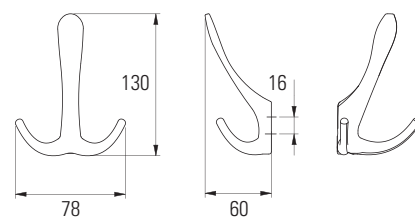
Acab.

Código

Cromado WZ-CORDOBA-01

Aço escovado WZ-CORDOBA-06

Mate preto WZ-CORDOBA-20M



## Cabide Valência



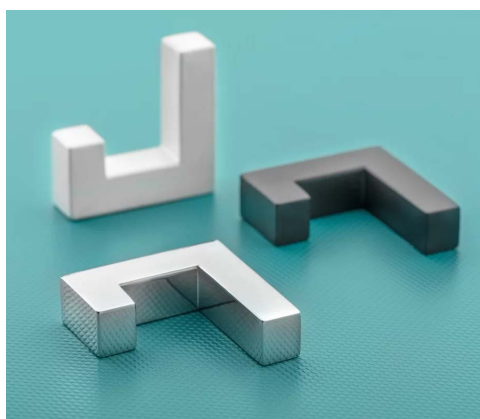
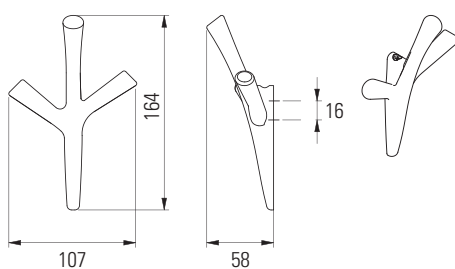
Acab.

Código

Cromado WZ-WALENCIA-01

Aço escovado WZ-WALENCIA-06

Mate preto WZ-WALENCIA-20M



## Cabide K2201



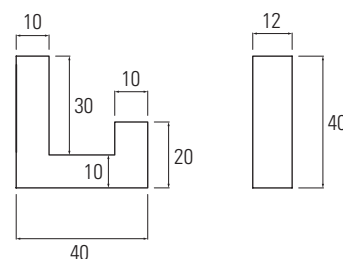
Acab.

Código

Cromado WZ-K2201-01

Aço escovado WZ-K2201-06

Mate preto WZ-K2201-CZ



## Cabide K2202



Acab.

Código

Cromado WZ-K2202-01

Aço escovado WZ-K2202-06

Mate preto WZ-K2202-CZ

