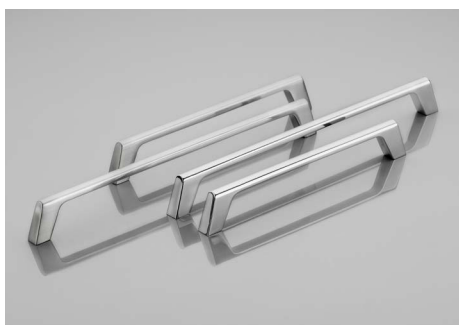


EUREKA

GTV

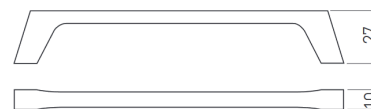
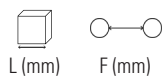


ASAS E CABIDES CASATREND
CASATREND



Asa UZ-G2

GTV.



Acabamento

L (mm)	F (mm)	Cromado	Inox	Preto mate
172	160	UZ-G2-160-01	UZ-G2-160-06	UZ-G2-160-20M
236	224	UZ-G2-224-01	UZ-G2-224-06	UZ-G2-224-20M

Asa Z – A100



Acabamento

F (mm)	Cromado brilho	Níquel satinado
96-128	A100.96CR	A100.96NS
160-192	A100.160CR	A100.160NS
288-320	A100.288CR	A100.288NS

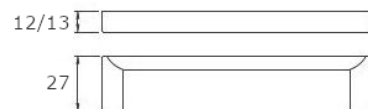


Asa Z – W2256



Acab.

L (mm)	F (mm)	Níquel satinado
135	128	W2256.128NS
168	160	W2256.160NS
200	192	W2256.192NS

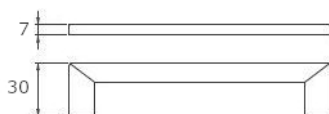


Asa Z – W23260



Acab.

F (mm)	Níquel satinado
128	W23260.128NS
160	W23260.160NS
192	W23260.192NS



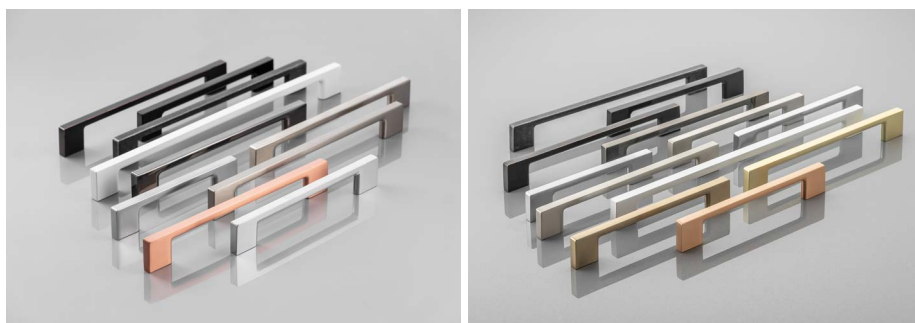
Asa Z – H3064



Acab.

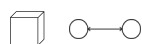
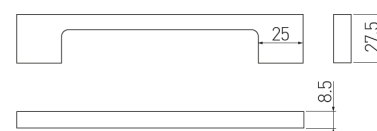
F (mm)	Níquel satinado
128	H3064.128NS
160	H3064.160NS
192	H3064.192NS
320	H3064.320NS

Asas Zamak



Asa UZ-819

GTV®



L (mm)	F (mm)	Acabamento										
		Cromado	Níquel satinado	Alumínio	Inox	Prata envelhecida	Branco	Latão dourado	Preto	Cromado preto	Cobre envelhecido	Cobre
129	96	xx096-01	xx096-02	xx096-05	xx096-06	xx096-07	xx096-10	—	xx096-20	xx096-12	xx096-14	—
161	128	xx128-01	xx128-02	xx128-05	xx128-06	xx128-07	xx128-10	xx128-16	xx128-20	xx128-12	xx128-14	xx128-15
193	160	xx160-01	xx160-02	xx160-05	xx160-06	xx160-07	xx160-10	xx160-16	xx160-20	xx160-12	xx160-14	xx160-15
225	192	xx192-01	xx192-02	xx192-05	xx192-06	xx192-07	xx192-10	xx192-16	xx192-20	xx192-12	xx192-14	xx192-15
289	256	xx256-01	xx256-02	xx256-05	xx256-06	xx256-07	xx256-10	xx256-16	xx256-20	xx256-12	xx256-14	xx256-15
353	320	xx320-01	xx320-02	xx320-05	xx320-06	xx320-07	xx320-10	—	xx320-20	xx320-12	xx320-14	—

Para obter o código do artigo, substituir "xx" por "UZ-819".

Asa Z – H4062



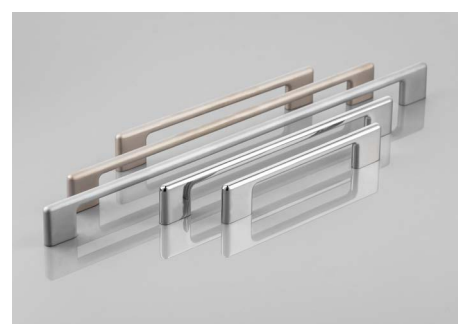
F (mm)

Acab.
Níquel
satinado

128	H4062.128NS
160	H4062.160NS
192	H4062.192NS
320	H4062.320NS

Asa Capri

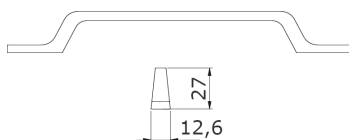
GTV®



L (mm)	F (mm)	Acabamento					Preto mate
		Cromado	Níquel Satinado	Alumínio	Inox	Alumínio	
138	128	UZ-CAPRI-128-01	UZ-CAPRI-128-02	UZ-CAPRI-128-05	UZ-CAPRI-128-06	UZ-CAPRI-128-20M	
170	160	UZ-CAPRI-160-01	UZ-CAPRI-160-02	UZ-CAPRI-160-05	UZ-CAPRI-160-06	UZ-CAPRI-160-20M	
202	192	UZ-CAPRI-192-01	UZ-CAPRI-192-02	UZ-CAPRI-192-05	UZ-CAPRI-192-06	UZ-CAPRI-192-20M	
266	256	UZ-CAPRI-256-01	UZ-CAPRI-256-02	UZ-CAPRI-256-05	UZ-CAPRI-256-06	UZ-CAPRI-256-20M	
330	320	UZ-CAPRI-320-01	UZ-CAPRI-320-02	UZ-CAPRI-320-05	UZ-CAPRI-320-06	—	

Asa Flavio

GTV

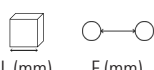


L (mm)	F (mm)	Acabamento			
		Cromado	Inox	Latão dourado	Preto Mate
161	96	UZ-FLAVIO-96-01	UZ-FLAVIO-96-06	UZ-FLAVIO-96-16	UZ-FLAVIO-96-20M
193	128	UZ-FLAVIO-128-01	UZ-FLAVIO-128-06	UZ-FLAVIO-128-16	UZ-FLAVIO-128-20M
225	160	UZ-FLAVIO-160-01	UZ-FLAVIO-160-06	UZ-FLAVIO-160-16	UZ-FLAVIO-160-20M

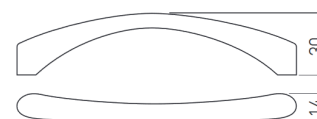


Asa Cleo

GTV



L (mm)	F (mm)	Acabamento	
		Cromado	Inox
137	128	UZ-CLEO-128-01	UZ-CLEO-128-06
169	160	UZ-CLEO-160-01	UZ-CLEO-160-06
201	192	UZ-CLEO-192-01	UZ-CLEO-192-06



* O puxador foi descatalogado.

Asa Bagio

GTV



L (mm)	F (mm)	Acabamento			
		Cromado	Latão envelhecido	Alumínio	Inox
136	128	UZ-BAGIO-128-01	UZ-BAGIO-128-04	UZ-BAGIO-128-05	UZ-BAGIO-128-06
168	160	UZ-BAGIO-160-01	UZ-BAGIO-160-04	UZ-BAGIO-160-05	UZ-BAGIO-160-06
200	192	UZ-BAGIO-192-01	UZ-BAGIO-192-04	UZ-BAGIO-192-05	UZ-BAGIO-192-06
328	320	UZ-BAGIO-320-01	UZ-BAGIO-320-04	UZ-BAGIO-320-05	UZ-BAGIO-320-06

L (mm)	F (mm)	Prata envelhecida	Titânio escovado	Cobre	Preto mate	Champanhe
136	128	UZ-BAGIO-128-07	UZ-BAGIO-128-11	UZ-BAGIO-128-15	UZ-BAGIO-128-20M	UZ-BAGIO-128-90
168	160	UZ-BAGIO-160-07	UZ-BAGIO-160-11	UZ-BAGIO-160-15	UZ-BAGIO-160-20M	UZ-BAGIO-160-90
200	192	UZ-BAGIO-192-07	UZ-BAGIO-192-11	UZ-BAGIO-192-15	UZ-BAGIO-192-20M	UZ-BAGIO-192-90
328	320	UZ-BAGIO-320-07	UZ-BAGIO-320-11	UZ-BAGIO-320-15	UZ-BAGIO-320-20M	UZ-BAGIO-320-90

Asas Zamak

Asa Z – J512



○—○ Acab.
F (mm) Níquel
satinado

160	J.512.160NS
192	J.512.192NS

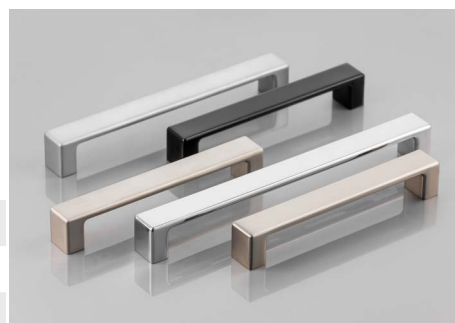
Asa Modena

GTV®



Acabamento

L (mm)	F (mm)	Cromado	Alumínio	Inox	Preto mate
140	128	UZ-MODEN-128-01	UZ-MODEN-128-05	UZ-MODEN-128-06	UZ-MODEN-128-20M
172	160	UZ-MODEN-160-01	UZ-MODEN-160-05	UZ-MODEN-160-06	UZ-MODEN-160-20M
204	192	UZ-MODEN-192-01	UZ-MODEN-192-05	UZ-MODEN-192-06	UZ-MODEN-192-20M



Asa Z – F660



○—○ Acab.
F (mm) Cromado
mate

128	F660.128CM
160	F660.160CM
192	F660.192CM
256	F660.256CM

Asa Z – F150

○—○ Acab.
F (mm) Níquel
satinado

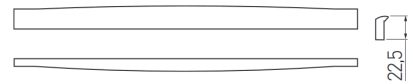
96	F150.96NS
128	F150.128NS
160	F150.160NS
192	F150.192NS
224	F150.224NS
320	F150.320NS





Asa Katania

GTV



Acabamento

L (mm)	F (mm)	Cromado	Cromado preto
334	320	UZ-KATAN-320-01	UZ-KATAN-320-12

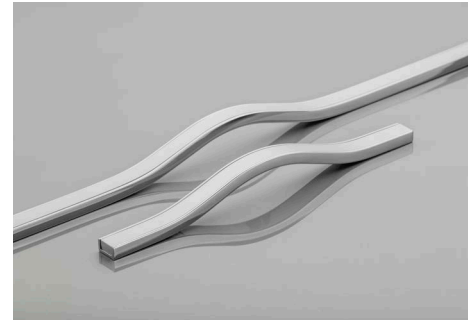
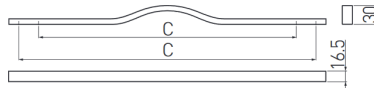
Asa Doppio

GTV



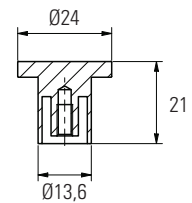
Acab.

L (mm)	F (mm)	Cromado / Alumínio
256	192/224	UA-DOPPIO192-01
512	416/480	UA-DOPPIO416-01



Puxador Spot

GTV

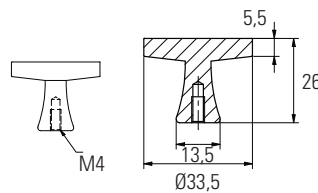


Acabamento		
Aço escovado	Dourado escovado	Preto mate
GZ-SPOT-1-06	GZ-SPOT-1-18	GZ-SPOT-1-20M

Puxador Dune

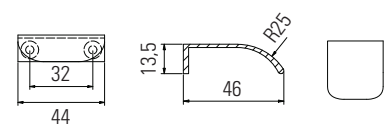
GTV

Acabamento		
Aço escovado	Dourado	Preto mate
GZ-DUNE-1-06	GZ-DUNE-1-16	GZ-DUNE-1-20M



Puxador Fiord

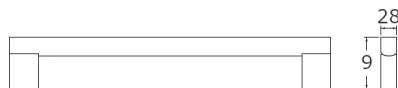
GTV



Acabamento			
Alumínio	Aço escovado	Dourado escovado	Preto mate
UZ-FIORD-32-05	UZ-FIORD-32-06	UZ-FIORD-32-18	UZ-FIORD-32-20M

Asas em Alumínio

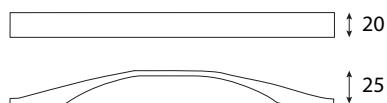
Asa AL – W4523



L (mm)	Acab.	
	Alumínio	
160	W4523.160A	
192	W4523.192A	
224	W4523.224A	
320	W4523.320A	
512	W4523.512A	

Asa AL – W4704

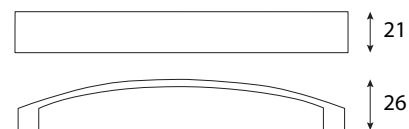
L (mm)	F (mm)	Acab.	
		BSN	
197	128	W4704.128	
226	160	W4704.160	



Asa AL – W44326



F (mm)	Acab.	
	BSN	
160	W44326.160	
192	W44326.192	



Asa AL – A220B

Vista de 20 mm.

F (mm)	Acab.	
	Alumínio	
160	A220B.160A	
192	A220B.192A	



Asa AL – A320



L (mm)	Acabamento	
	Alumínio	Cromado brilho
32	A320.32A	A320.32CR
64	A320.64A	A320.64CR
96	A320.96A	A320.96CR
128	A320.128A	A320.128CR
160	A320.160A	A320.160CR

Asa AL – F780

L (mm)	Acab. Anonizado natural
160	F780.160A
192	F780.192A
256	F780.256A
320	F780.320A



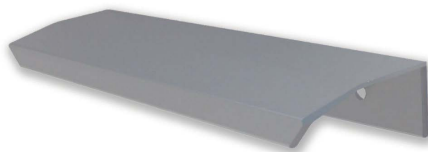
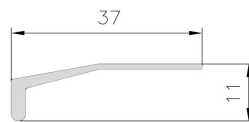
Asa AL – F770

L (mm)	Acab. Cromado brilho
128	F770.128CR
160	F770.160CR
192	F770.192CR
224	F770.224CR
256	F770.256CR
288	F770.288CR
320	F770.320CR

Asa 09 Autocolante

Topos acabados.

L (mm)	Acabamento	
	Anonizado natural	Anonizado brilho
90	09.90A	09.90AB
150	09.150A	09.150AB



Asa 73

Topos acabados.

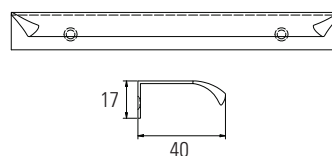
L (mm)	Acab. Anonizado natural
150	073.150A

Asas em Alumínio

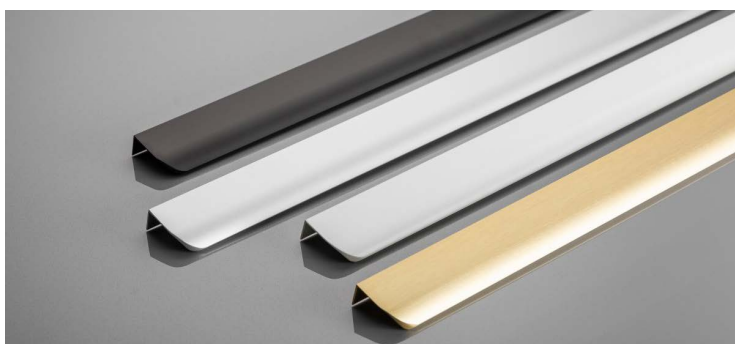


Asa Hexa

GTV®

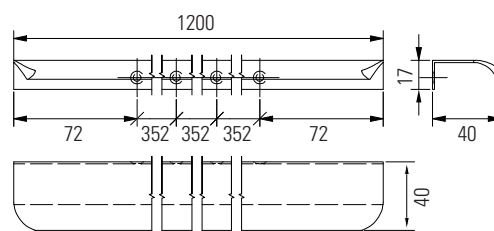


L (mm)	F (mm)	Acabamento					
		Cromado	Alumínio	Branco	Dourado escovado	Preto mate	Dourado brilhante escovado
50	32	UA-HEXA-32-01	UA-HEXA-32-05	UA-HEXA-32-10M	UA-HEXA-32-18	UA-HEXA-32-20M	UA-HEXA-32-22
150	96	UA-HEXA-96-01	UA-HEXA-96-05	UA-HEXA-96-10M	UA-HEXA-96-18	UA-HEXA-96-20M	UA-HEXA-96-22
190	160	UA-HEXA-160-01	UA-HEXA-160-05	UA-HEXA-160-10M	—	UA-HEXA-160-20M	UA-HEXA-160-22
225	192	UA-HEXA-192-01	UA-HEXA-192-05	UA-HEXA-192-10M	UA-HEXA-192-18	UA-HEXA-192-20M	UA-HEXA-192-22
290	256	UA-HEXA-256-01	UA-HEXA-256-05	UA-HEXA-256-10M	—	UA-HEXA-256-20M	UA-HEXA-256-22
360	320	UA-HEXA-320-01	UA-HEXA-320-05	UA-HEXA-320-10M	—	UA-HEXA-320-20M	UA-HEXA-320-22

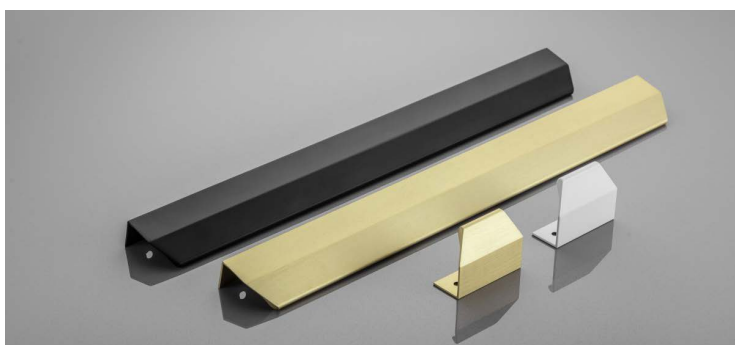


Asa Hexa Long

GTV®

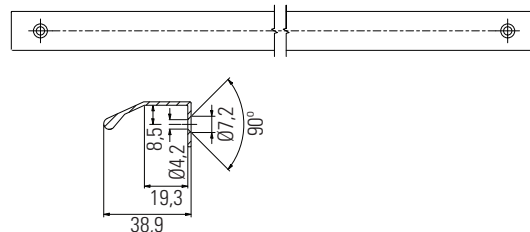


L (mm)	F (mm)	Acabamento			
		Alumínio	Branco	Preto mate	Dourado brilhante escovado
1200	—	UA-HEXA-1200-05	UA-HEXA-1200-10M	UA-HEXA-1200-20M	UA-HEXA-1200-22

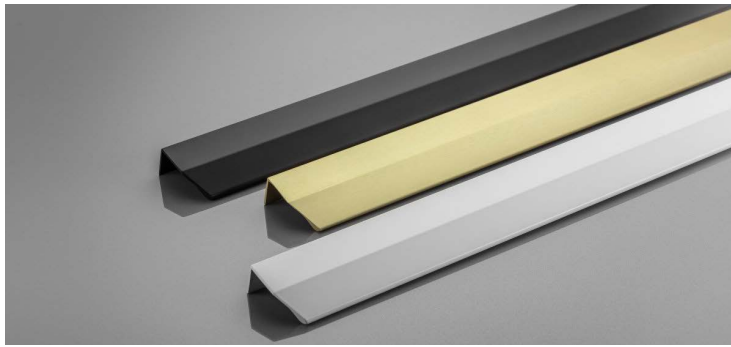


Asa Trex-Cross

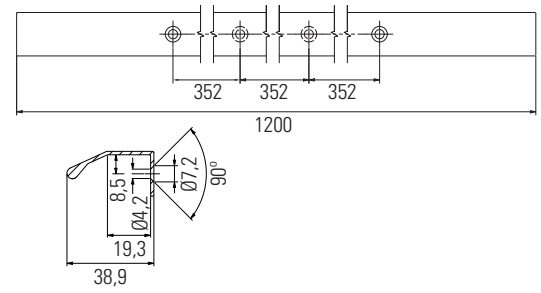
GTV®



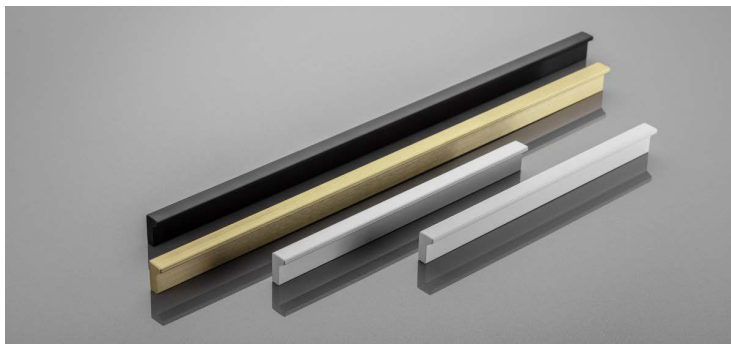
L (mm)	F (mm)	Acabamento		
		Preto mate	Branco mate	Dourado brilhante escovado
50	32	UA-TREX-CROSS-32-20M	UA-TREX-CROSS-32-10M	UA-TREX-CROSS-32-22
350	320	UA-TREX-CROSS-320-20M	UA-TREX-CROSS-320-10M	UA-TREX-CROSS-320-22



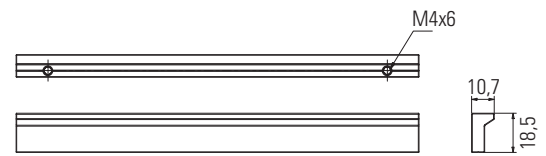
Asa Trex-Cross Long **GTV**



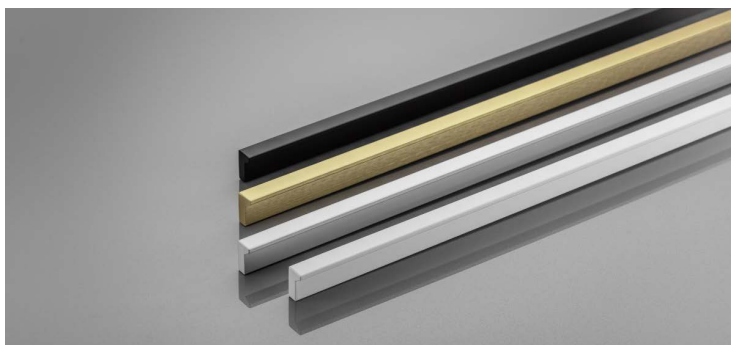
		Acabamento		
L (mm)	F (mm)	Preto mate	Branco mate	Dourado brilhante escovado
1200	—	UA-TREX-CROSS-1200-20M	UA-TREX-CROSS-1200-10M	UA-TREX-CROSS-1200-22



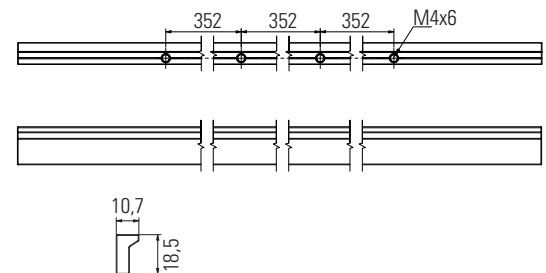
Asa Pillar **GTV**



		Acabamento			
L (mm)	F (mm)	Alumínio	Preto mate	Branco mate	Dourado brilhante escovado
190	160	UA-PILLAR-160-05	UA-PILLAR-160-20M	UA-PILLAR-160-10M	UA-PILLAR-160-22
350	320	UA-PILLAR-320-05	UA-PILLAR-320-20M	UA-PILLAR-320-10M	UA-PILLAR-320-22



Asa Pillar Long **GTV**



		Acabamento			
L (mm)	F (mm)	Alumínio	Preto mate	Branco mate	Dourado brilhante escovado
1200	—	UA-PILLAR-1200-05	UA-PILLAR-1200-20M	UA-PILLAR-1200-10M	UA-PILLAR-1200-22

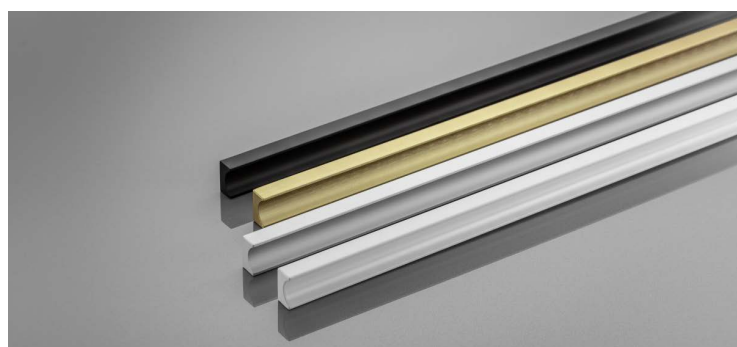
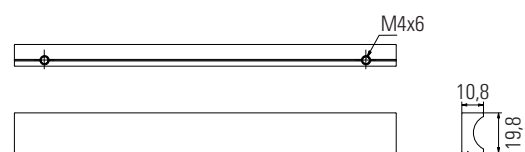
Asas em Alumínio



L (mm)	F (mm)	Acabamento			
		Alumínio	Preto mate	Branco mate	Dourado brilhante escovado
160	190	UA-GROOVE-160-05	UA-GROOVE-160-20M	UA-GROOVE-160-10M	UA-GROOVE-160-22
320	360	UA-GROOVE-320-05	UA-GROOVE-320-20M	UA-GROOVE-320-10M	UA-GROOVE-320-22

Asa Groove

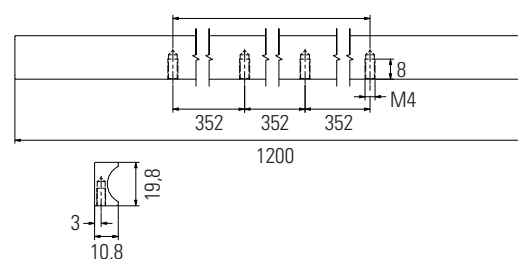
GTV®



L (mm)	F (mm)	Acabamento			
		Alumínio	Preto mate	Branco mate	Dourado brilhante escovado
1200	—	UA-GROOVE-1200-05	UA-GROOVE-1200-20M	UA-GROOVE-1200-10M	UA-GROOVE-1200-22

Asa Groove Long

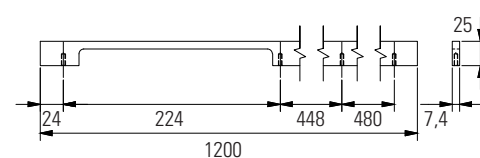
GTV®



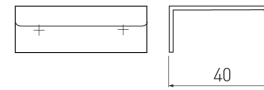
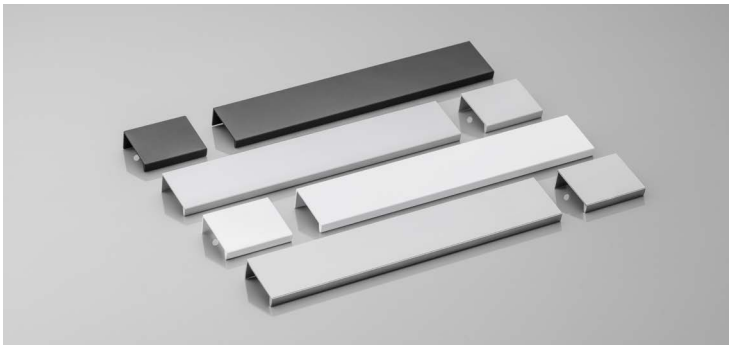
L (mm)	F (mm)	Acabamento		
		Branco	Dourado escovado brilhante	Preto mate
1200	224	UA-EXTEND-1200-10M	UA-EXTEND-1200-22	UA-EXTEND-1200-20M

Asa Extend

GTV®



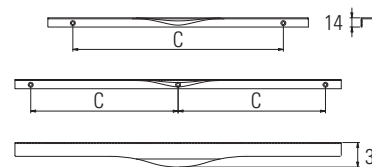
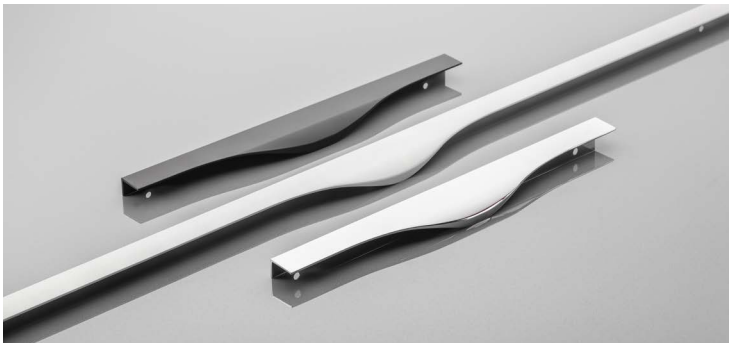
Asa Hexi



Acabamento

L (mm)	F (mm)	Cromado	Alumínio	Branco mate	Dourado escovado	Preto mate	Antracite
50	32	UA-HEXI-01	UA-HEXI-05	UA-HEXI-10M	UA-HEXI-18	UA-HEXI-20M	UA-HEXI-60
150	96	UA-HEXI96-01	UA-HEXI96-05	UA-HEXI96-10M	UA-HEXI96-18	UA-HEXI96-20M	UA-HEXI96-60
190	160	UA-HEXI160-01	UA-HEXI160-05	UA-HEXI160-10M	UA-HEXI160-18	UA-HEXI160-20M	UA-HEXI160-60
225	192	UA-HEXI192-01	UA-HEXI192-05	UA-HEXI192-10M	UA-HEXI192-18	UA-HEXI192-20M	UA-HEXI192-60
290	256	UA-HEXI256-01	UA-HEXI256-05	UA-HEXI256-10M	UA-HEXI256-18	UA-HEXI256-20M	UA-HEXI256-60
360	320	UA-HEXI320-01	UA-HEXI320-05	UA-HEXI320-10M	UA-HEXI320-18	UA-HEXI320-20M	UA-HEXI320-60
3500	-	-	UA-HEXI-3500-05	-	-	-	-

Asa Picado

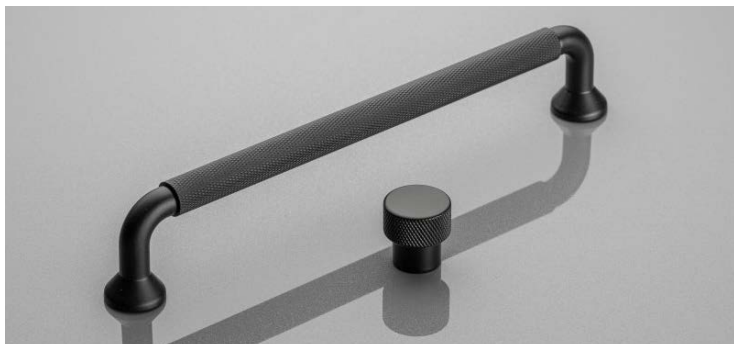


Acabamento

L (mm)	F (mm)	Preto mate	Cromado	Alumínio	Dourado escovado
296	256	UA-PICADO-256-296-20M	UA-PICADO-256-296-01	UA-PICADO-256-296-05	UA-PICADO-256-296-18
396	320	UA-PICADO-320-396-20M	UA-PICADO-320-396-01	UA-PICADO-320-396-05	UA-PICADO-320-396-18
496	2 x 224 *	UA-PICADO-224-496-20M	UA-PICADO-224-496-01	UA-PICADO-224-496-05	UA-PICADO-224-496-18
596	2 x 256 *	UA-PICADO-256-596-20M	UA-PICADO-256-596-01	UA-PICADO-256-596-05	UA-PICADO-256-596-18
796	2 x 352 *	UA-PICADO-352-796-20M	UA-PICADO-352-796-01	UA-PICADO-352-796-05	UA-PICADO-352-796-18

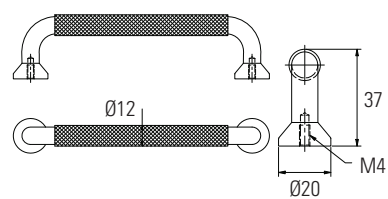
* Montado com 3 parafusos.

Asas em Alumínio



Asa Structure

GTV®



L (mm)



F (mm)

Acabamento

Preto mate

147

128

UA-STRUCTURE-128-20M

212

192

UA-STRUCTURE-192-20M

Puxador Structure

GA-STRUCTURE-1-20M

Asa Inox de Ø 10 e Ø 12 mm



L (mm)	F (mm)	Diâmetro	
		10 mm	12 mm
160	96	AT10.96I	AT12.96I
192	128	AT10.128I	AT12.128I
224	160	AT10.160I	AT12.160I
256	192	AT10.192I	AT12.192I
288	224	AT10.224I	AT12.224I
320	256	AT10.256I	AT12.256I
352	288	AT10.288I	AT12.288I
384	320	AT10.320I	AT12.320I
416	352	AT10.352I	AT12.352I
456	392	AT10.392I	AT12.392I
556	492	AT10.492I	AT12.492I
656	592	AT10.592I	AT12.592I
756	692	AT10.692I	AT12.692I
856	792	T.10.792I	AT12.792I
1256	1192	–	AT12.1192I
1496	1392	–	AT12.1392I

Asa Tubo Inox de Ø 10 e Ø 12 mm (OCA)

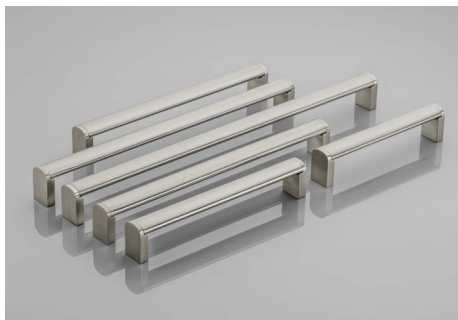
L (mm)	F (mm)	Diâmetro	
		10 mm	12 mm
160	96	ATO10.96I	–
192	128	ATO10.128I	ATO12.128I
224	160	ATO10.160I	ATO12.160I
256	192	ATO10.192I	ATO12.192I



Asa Inox Quadrada 12×12

F (mm)	Código
96	Q1212.96I
128	Q1212.128I
160	Q1212.160I
192	Q1212.192I
224	Q1212.224I
320	Q1212.320I


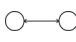
Asas em Inox

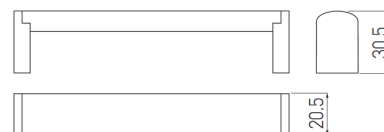


Asa Inox 682

GTV®

Barra em inox.
 Topos em zamak com acabamento em inox.

 L (mm)	 F (mm)	Código Inox
136	128	UZ-682128-06
170	160	UZ-682160-06
209	192	UZ-682192-06
232	224	UZ-682224-06
266	256	UZ-682256-06
329	320	UZ-682320-06
425	416	UZ-682416-06
489	480	UZ-682480-06



Asa U Inox de Ø 10 mm



F (mm)	Código
96	U10.96I
128	U10.128I
160	U10.160I
192	U10.192I
224	U10.224I



Asa Ponte Inox de Ø 10 mm



F (mm)	Código
96	P10.96I
128	P10.128I
160	P10.160I
192	P10.192I



Puxador Unha Inox



D (mm) Código

12 PU12I

15 PU15I

18 PU18I

20 PU20I

25 PU25I



Puxador Quadrado Inox



L (mm) Código

15 PQ15I

19 PQ19I

Asas Eureka

Asa 1447

EUREKA



L (mm)

217



F (mm)

192

Acab.
Cromado
brilho

1447.160CR



Asa 1300

EUREKA



L (mm)

210

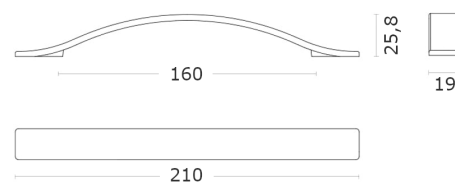


F (mm)

160

Acab.
Cromado
brilho

1300.160CR



Asa 7001

EUREKA



F (mm)

160

Acab.

Níquel mate

7001.160NM



Asa 7033

EUREKA



F (mm)

192

Acabamento

Cromado
brilho

7033.192CR

Níquel mate

7033.192NM

Asa 7082

EUREKA



F (mm)

160

Acab.

Níquel mate

7082.160NM



Asa 7080



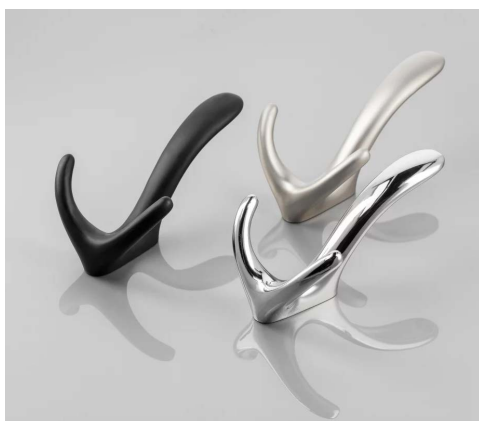
Acab.

F (mm) Niquel mate

160 7080.160NM



Cabides



Cabide Córdoba



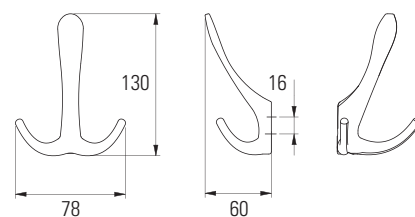
Acab.

Código

Cromado WZ-CORDOBA-01

Aço escovado WZ-CORDOBA-06

Mate preto WZ-CORDOBA-20M



Cabide Valência



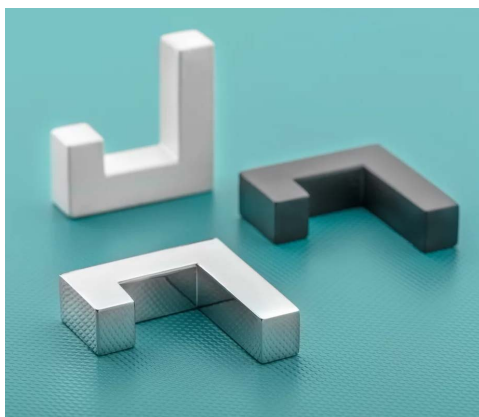
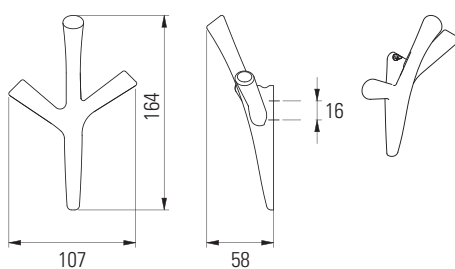
Acab.

Código

Cromado WZ-WALENCIA-01

Aço escovado WZ-WALENCIA-06

Mate preto WZ-WALENCIA-20M



Cabide K2201



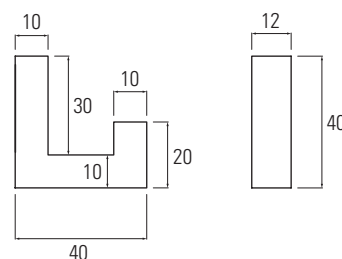
Acab.

Código

Cromado WZ-K2201-01

Aço escovado WZ-K2201-06

Mate preto WZ-K2201-CZ



Cabide K2202



Acab.

Código

Cromado WZ-K2202-01

Aço escovado WZ-K2202-06

Mate preto WZ-K2202-CZ

