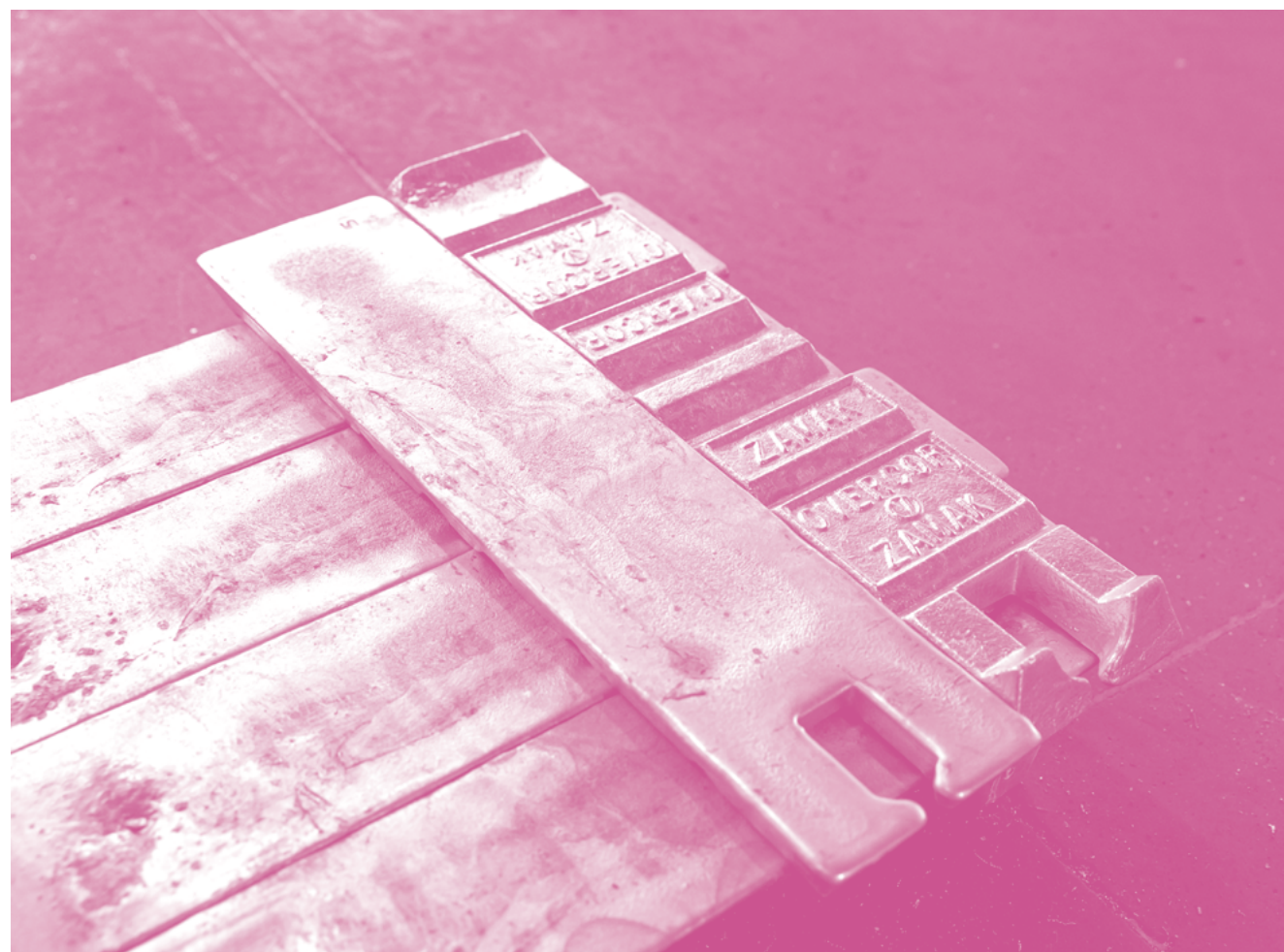


NAVARRO
AZORÍN





Fabricado 100% en España desde hace más de 50 años.

No es muy usual. Hay, ciertamente, pocas fábricas de tiradores en Europa Occidental y Navarro Azorín es, desde hace más de 50 años, una de ellas.

50 personas, 50 familias.

Un producto 100% español y europeo fabricado en Yecla (Murcia) en un proyecto empresarial que cuenta con el apoyo de las más de 50 familias que directamente ayudan a conseguir nuestros objetivos de calidad y sostenibilidad.

Devolviendo a la sociedad parte de lo que nos aporta.

Con una decana tradición de mecenazgo a la cultura musical de nuestro entorno y patrocinando eventos de música desde hace más de 30 años.

Diseño español para el mundo.

Apoiados por el mejor diseño español con nombres como Yonoh Studio, Carlos Tíscar, Manolo Durán y otros.

Proyectos a medida del cliente.

Diseño exclusivo para los más selectos fabricantes de mobiliario. Tener el 100% de los procesos en nuestra fábrica nos permite desarrollar proyectos únicos y personalizados para cada cliente. Enviamos más del 50% de nuestra producción a decenas de países alrededor de todo el Mundo.

100% Made in Spain for over 50 years.

It is not very usual. There are certainly few handle factories in Western Europe and Navarro Azorín has been one of them for more than 50 years.

50 People, 50 families.

A 100% Spanish and European product manufactured in the town of Yecla (Murcia) in a business project that counts on the support of more than 50 families who directly help us achieve our quality and sustainability goals.

Returning to society some of what it gives us.

With a long tradition of patronage to regional musical culture and sponsoring music events for more than 30 years.

Spanish design for the world.

Supported by the best Spanish design studios, such as Yonoh Studio, Carlos Tíscar, Manolo Durán and others.

Custom-made projects.

Exclusive design for the finest furniture manufacturers. Keeping 100% of the processes in-house allows us to develop unique and customised projects for each client. We ship more than 50% of our production to dozens of countries around the world.







Fabricado con un 100% energía solar.

Una fabricación respetuosa con el Medio Ambiente en unas instalaciones alimentadas, prácticamente, al 100% por energía solar.

Aguas depuradas y aptas para ser devueltas al entorno.

Reciclando y depurando el 100% de su consumo en agua para devolverla de nuevo al medio ambiente como apta para el riego de plantaciones de consumo humano.

Cromado sostenible.

Utilizando en nuestra línea de baños de manera pionera la tecnología de cromado del Cromo+3, el Cromo sostenible que existe de manera natural en nuestro entorno y que evita cualquier riesgo para las personas y el medio ambiente.

Hacemos accesorios que aportan utilidad y estética al mueble. Lo hacemos, además, bien, en nuestra propia fábrica, con respeto a la gente, el medio ambiente y con casi un 100% de nuestras necesidades energéticas suministradas por el Sol.

Made with 100% solar energy.

Environmentally friendly manufacturing in a facility powered almost 100% by solar energy.

Treated water, suitable to be returned to the environment.

Recycling and purifying 100% of water consumed in order to return it back to the environment to be used to irrigate crops for human consumption.

Sustainable chrome plating.

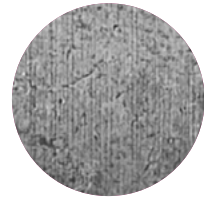
Pioneering in the use of chrome plating technology of Chrome+3, the sustainable chrome that exists naturally in our environment and prevents any risk to people and the environment.

We produce accessories that add utility and aesthetics to furniture. And we do it well, in our own factory, with respect for people and the environment and with near of the 100% of our energy

ACABADOS

Baños Clásicos Zamak

Zamak Classic Finishes / Finitions Classiques Zamak



016
PLATA VIEJA
OLD SILVER
ARGENT VIEILLI



002
CUERO PLB
PLB (OLD BRASS)
PLB (BRONZE VIEILLI)



018
COBRE ENVEJECIDO
OLD COPPER
CUIVRE VIEILLI

Baños Para Zamak Y Aluminio

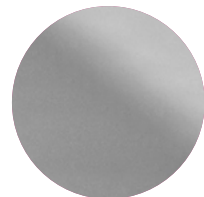
Zamak And Aluminium Plating Finishes / Finitions Électrolyse Pour Zamak Et Aluminium



026
CROMO BRILLO
SHINY CHROME
CHROME BRILLANT

Baños Para Zamak

Zamak Plating Finishes / Finitions Électrolyse Pour Zamak



023
CROMO MATE
MATT CHROME
CHROME MAT



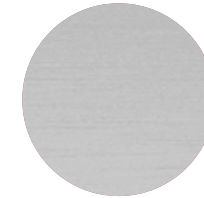
017
NÍQUEL SEDA
SILK NICKEL
NICKEL SOIE

Anodizados Para Aluminio

Anodized For Aluminium / Anodisé Pour L'aluminium



032
ANODIZADO BRILLO
SHINY ANODIZED
ANODISÉ BRILLANT



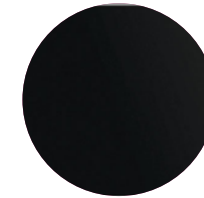
030
ANODIZADO MATE PLUS
MATT ANODIZED PLUS
ANODISÉ MATTE PLUS



046
ANODIZADO INOX PLUS
STAINLESS ANODIZED PLUS
ANODISÉ INOX PLUS



039
ANODIZADO NEGRO BRILLO
SHINY BLACK ANODIZED
ANODISÉ NOIR BRILLANT



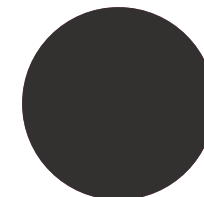
034
ANODIZADO NEGRO MATE
MATT BLACK ANODIZED
ANODISÉ NOIR MATTE

Pinturas Para Zamak, Aluminio Y Abs

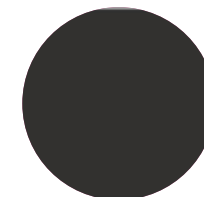
Zamak, Aluminium And Abs Paints / Zamak, Aluminium Et Abs Peintures



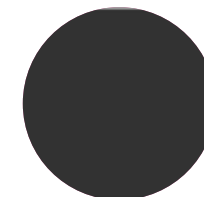
744
BLANCO
WHITE
BLANC



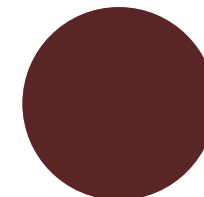
916
NEGRO GRAFITO
GRAPHITE BLACK
NOIR GRAPHITE



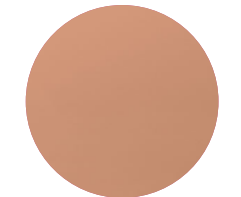
425
VULCANO
VULCANO
VULCANO



865
NEGRO COBALTO
COBALT BLACK
NOIR COBALT



960
ALAZÁN
SORREL
ALEZAN



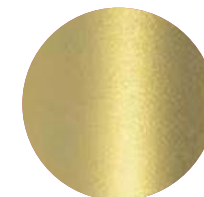
961
COBRE ENEO
ENEO COOPER
CUIVRE ENEO



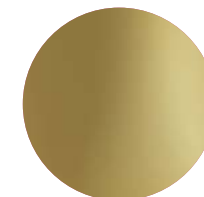
021
EFECTO CROMO
CHROME EFFECT
EFFET CHROME



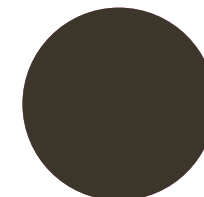
952
NÍQUEL VELVETO
VELVETO NICKEL
NICKEL VELVETO



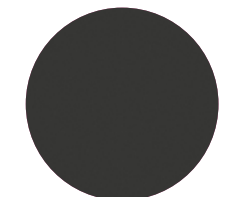
959
ORO SOLER
SOLER GOLD
OR SOLER



313
ORO RABAT
RABAT GOLD
OR RABAT



308
BRONCE ALFA
ALPHA BRONZE
ALPHA BRONZE

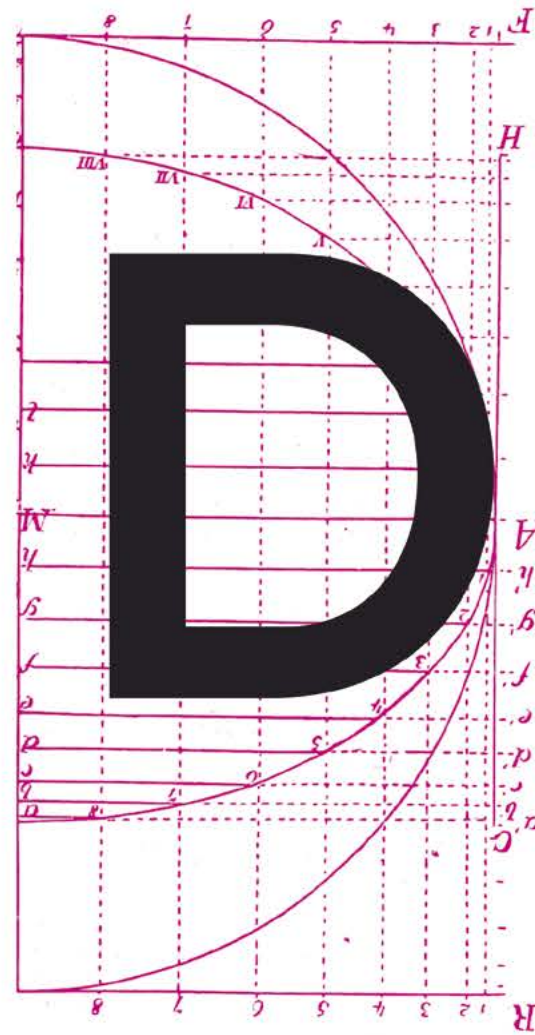


309
CUARZO AHUMADO
SMOKY QUARTZ
QUARTZ FUMÉ

Bajo demanda, podemos realizar cualquier color en pintura que el cliente necesite.

On request, we can make any colour of paint required by the customer.

Sur demande, nous pouvons produire n'importe quelle couleur de peinture demandée par le client.



DESIGN

Registered Feb. 18, 1880.
HARD BROTHERS
TRADE-MARK
For the purpose of the design of the letter 'D'.

AL DISEÑO / AL DESIGN / AL DESIGN



7451 VETEO



7403 KOMPI



7171



7E07 TECNA



7191



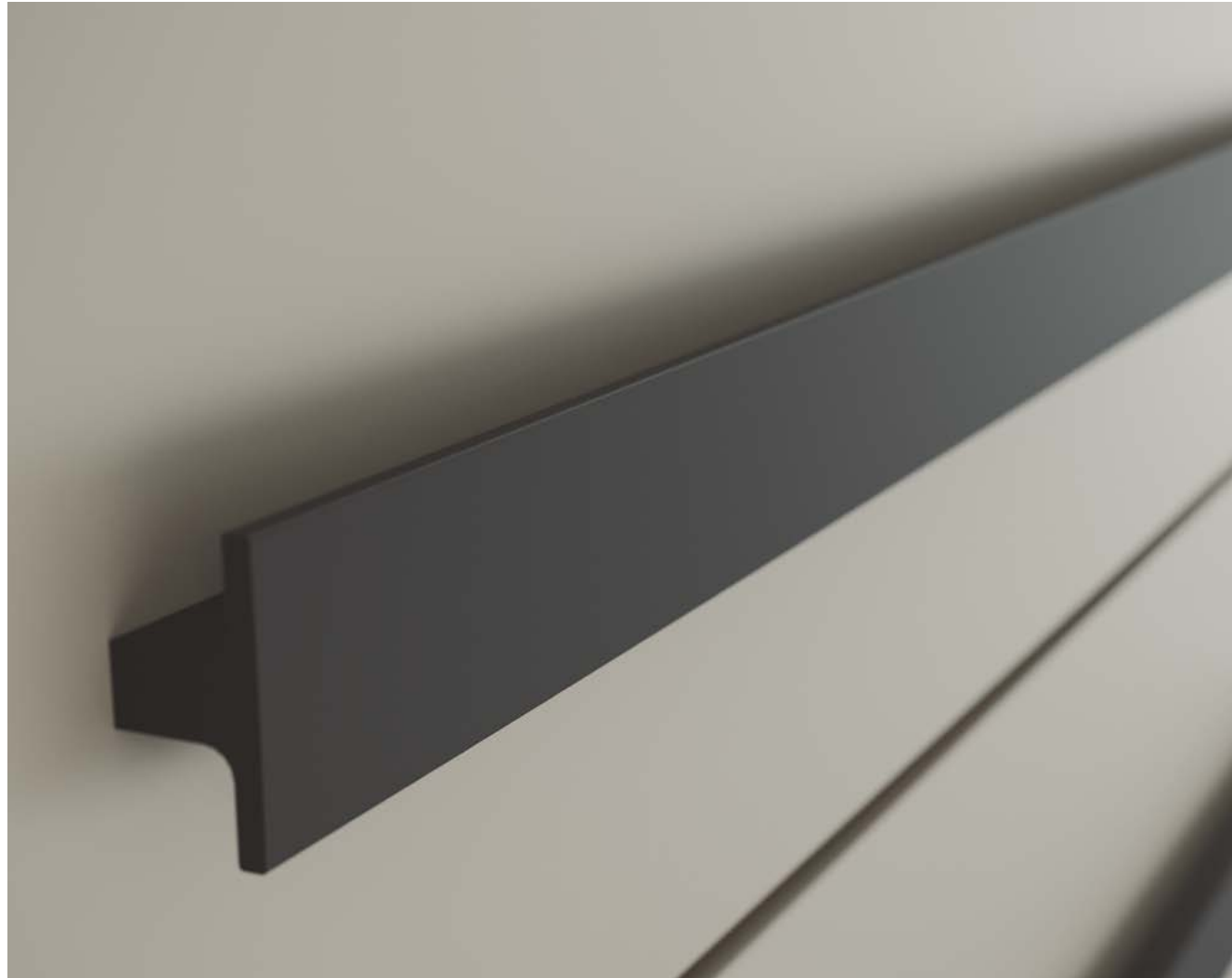
7192



7229



7240



7245



7274



7278



7279



7287



7290



7295



7376



7388 TANA



7392



7C10



7404 CUSTOM



7420 PARAL



7441 FIZZA



7783



7B79

7797





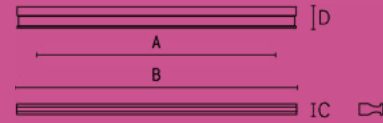
7453 ESKI



8080 OCHENTA

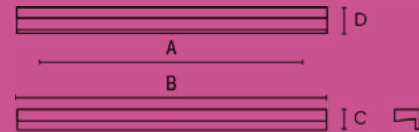
7B79

Ref.	A	B	C	D
7B79.0104	64	104	8	16
7B79.0200	128	200	8	16
7B79.0400	160-160	400	8	16
7B79.0600	224-224	600	8	16
7B79.0800	128-320-128	800	8	16



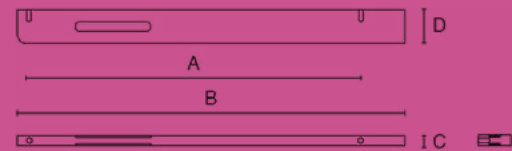
7C10

Ref.	A	B	C	D
7C10.0150	128	150	14	18
7C10.0240	192	240	14	18
7C10.0300	256	300	14	18
7C10.0600	320	600	14	18



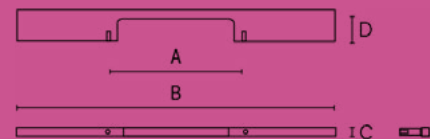
7E07 TECNA

Ref.	A	B	C	D
7E07.0300	256	300	8	25
7E07.0850	448-256	850	8	25



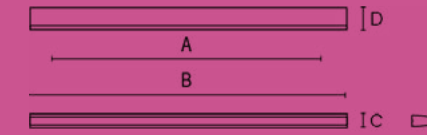
7171

Ref.	A	B	C	D
7171.0210	160	210	9	30
7171.0300	224	300	9	30
7171.0500	64-320-64	500	9	30



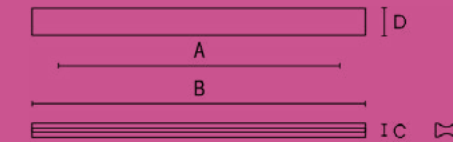
7191

Ref.	A	B	C	D
7191.0072	32	72	9	14
7191.0104	64	104	9	14
7191.0168	64	168	9	14
7191.0200	96	200	9	14
7191.0400	48-96-48	400	9	14



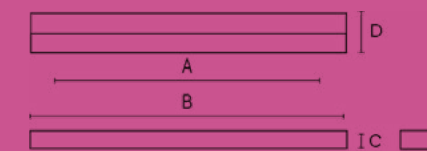
7192

Ref.	A	B	C	D
7192.0200	128	200	9	17
7192.0400	192	400	9	17
7192.0800	256-192-256	800	9	17



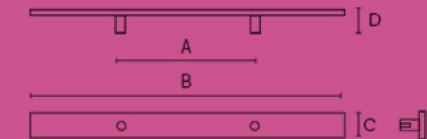
7229

Ref.	A	B	C	D
7229.0200	96	200	12	26
7229.0400	320	400	12	26
7229.0800	320-320	800	12	26



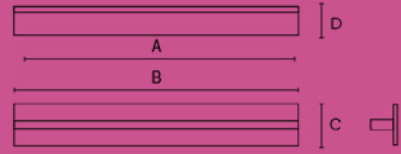
7240

Ref.	A	B	C	D
7240.0064	64	150	25	23
7240.0128	128	300	25	23
7240.0320	320	450	25	23



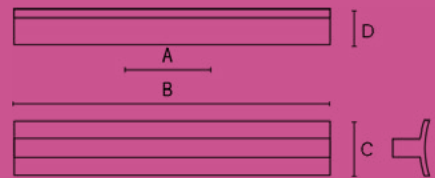
7245

Ref.	A	B	C	D
7245.0030	16	30	30	20
7245.0150	64	150	30	20
7245.0300	192	300	30	20
7245.0500	320	500	30	20



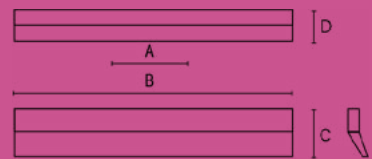
7274

Ref.	A	B	C	D
7274.0170	128	170	30	20
7274.0300	128	300	30	20
7274.0500	320	500	30	20



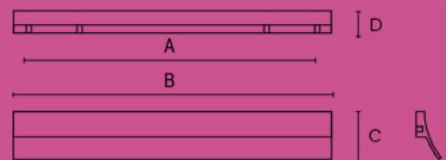
7278

Ref.	A	B	C	D
7278.0050	32	50	40	15
7278.0200	128	200	40	15
7278.0400	320	400	40	15



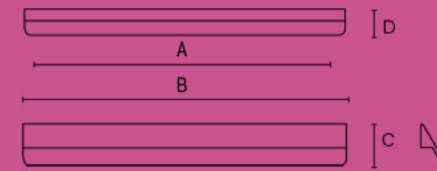
7279

Ref.	A	B	C	D
7279.0050	32	50	30	16
7279.0150	96	150	30	16
7279.0200	128	200	30	16
7279.0400	320	400	30	16



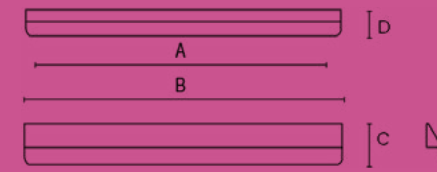
7287

Ref.	A	B	C	D
7287.0050	32	50	26	16
7287.0200	64	200	26	16
7287.0400	128	400	26	16
7287.0600	320	600	26	16



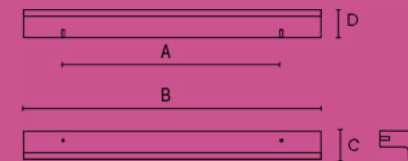
7290

Ref.	A	B	C	D
7290.0050	32	50	33	21
7290.0200	128	200	33	21
7290.0400	320	400	33	21



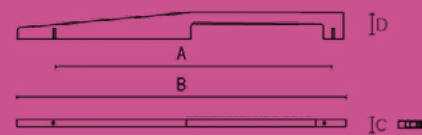
7295

Ref.	A	B	C	D
7295.0150	64	150	18	22
7295.0200	128	200	18	22
7295.0220	160	220	18	22
7295.0400	320	400	18	22



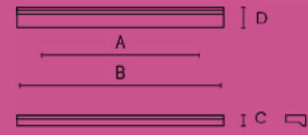
7376

Ref.	A	B	C	D
7376.0300	256	300	8	25
7376.0850	448-256	850	8	25



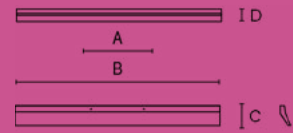
7388 TANA

Ref.	A	B	C	D
7388.0100	64	100	11	20
7388.0190	160	190	11	20
7388.0300	256	300	11	20
7388.0380	320	380	11	20



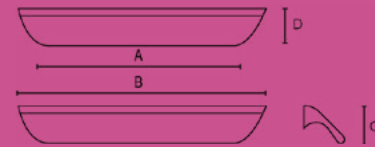
7392

Ref.	A	B	C	D
7392.0200	128	200	26	16
7392.0400	320	400	26	16
7392.0600	320	600	26	16
7392.0800	320-320	800	26	16



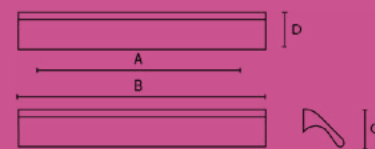
7403 KOMPI

Ref.	A	B	C	D
7403.0150	96	150	25	27
7403.0272	192	272	25	27
7403.0380	320	380	25	27
7403.0500	48-3200-48	500	25	27



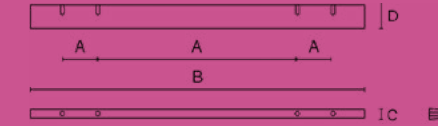
7404 CUSTOM

Ref.	A	B	C	D
7404.0050	32	50	25	27
7404.0150	96	150	25	27
7404.0300	192	300	25	27
7404.0600	320	600	25	27



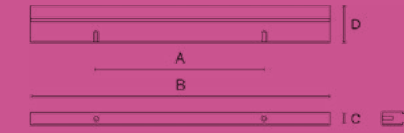
7420 PARAL

Ref.	A	B	C	D
7420.0184	16-128-16	184	10	23
7420.0320	32-192-32	320	10	23
7420.0500	64-160-160-64	312	10	23



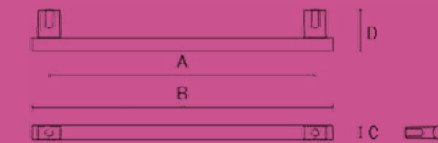
7441 FIZZA

Ref.	A	B	C	D
7441.0100	64	100	7	20
7441.0150	96	150	7	20
7441.0250	192	250	7	20
7441.0400	320	400	7	20



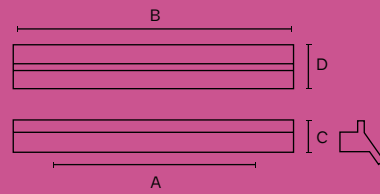
7451

Ref.	A	B	C	D
1050.0025		12	12	25
7451.0060		60	12	35
7451.0190	160	190	12	35
7451.0254	224	254	12	35
7451.0350	320	350	12	35
7451.0510	480	510	12	35
7451.0990	480-480	990	12	35



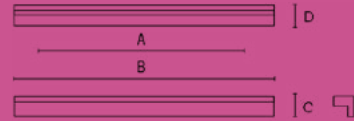
7453 ESKI

Ref.	A	B	C	D
7453.0100	64	100	17	14
7453.0150	96	150	17	14
7453.0200	128	200	17	14
7453.0300	192	300	17	14
7453.0400	320	400	17	14
7453.1200	192-320-192	1200	17	14



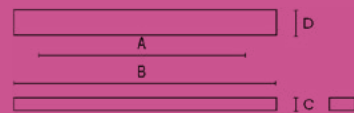
7783

Ref.	A	B	C	D
7783.0045	32	45	16	16
7783.0104	64	104	16	16
7783.0200	32-64-32	200	16	16
7783.0500	64-192-64	500	16	16



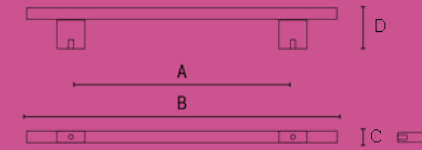
7797

Ref.	A	B	C	D
7797.0072	32	72	10	20
7797.0136	64	136	10	20
7797.0300	128	300	10	20
7797.0500	192	500	10	20

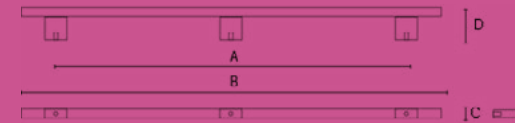


8080 OCHENTA

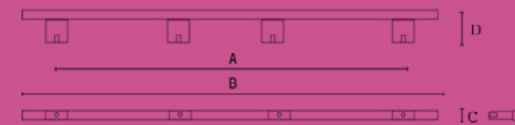
Ref.	A	B	C	D
8080.0096	96	160	9	30
8080.0128	128	192	9	30
8080.0160	160	224	9	30
8080.0192	192	256	9	30
8080.0242	242	306	9	30
8080.0292	292	356	9	30
8080.0342	342	406	9	30
8080.0392	392	456	9	30



Ref.	A	B	C	D
8080.0492	492	556	9	30
8080.0592	592	656	9	30
8080.0692	692	756	9	30
8080.0792	792	856	9	30



Ref.	A	B	C	D
8080.0992	992	1056	9	30



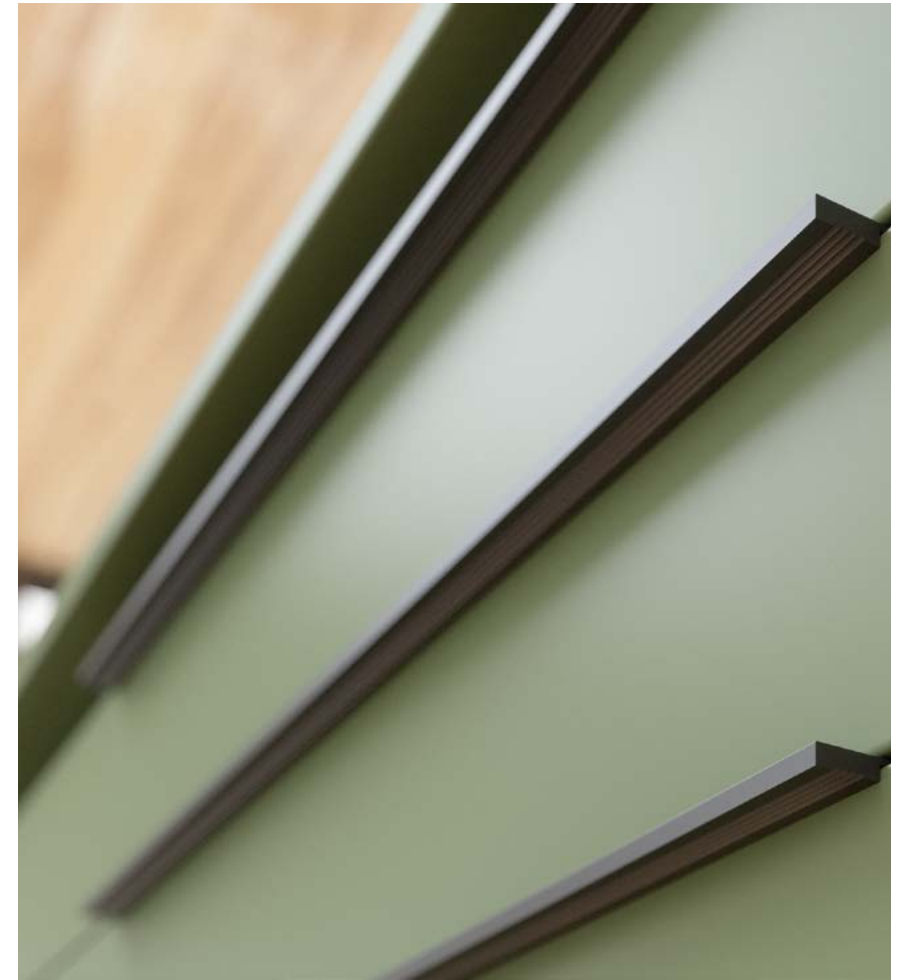


EDGE ALUMINIUM

AL SOLAPADOS / EDGE ALUMINIUM / FIXATION ARRIERE



7458 DENTO





7020



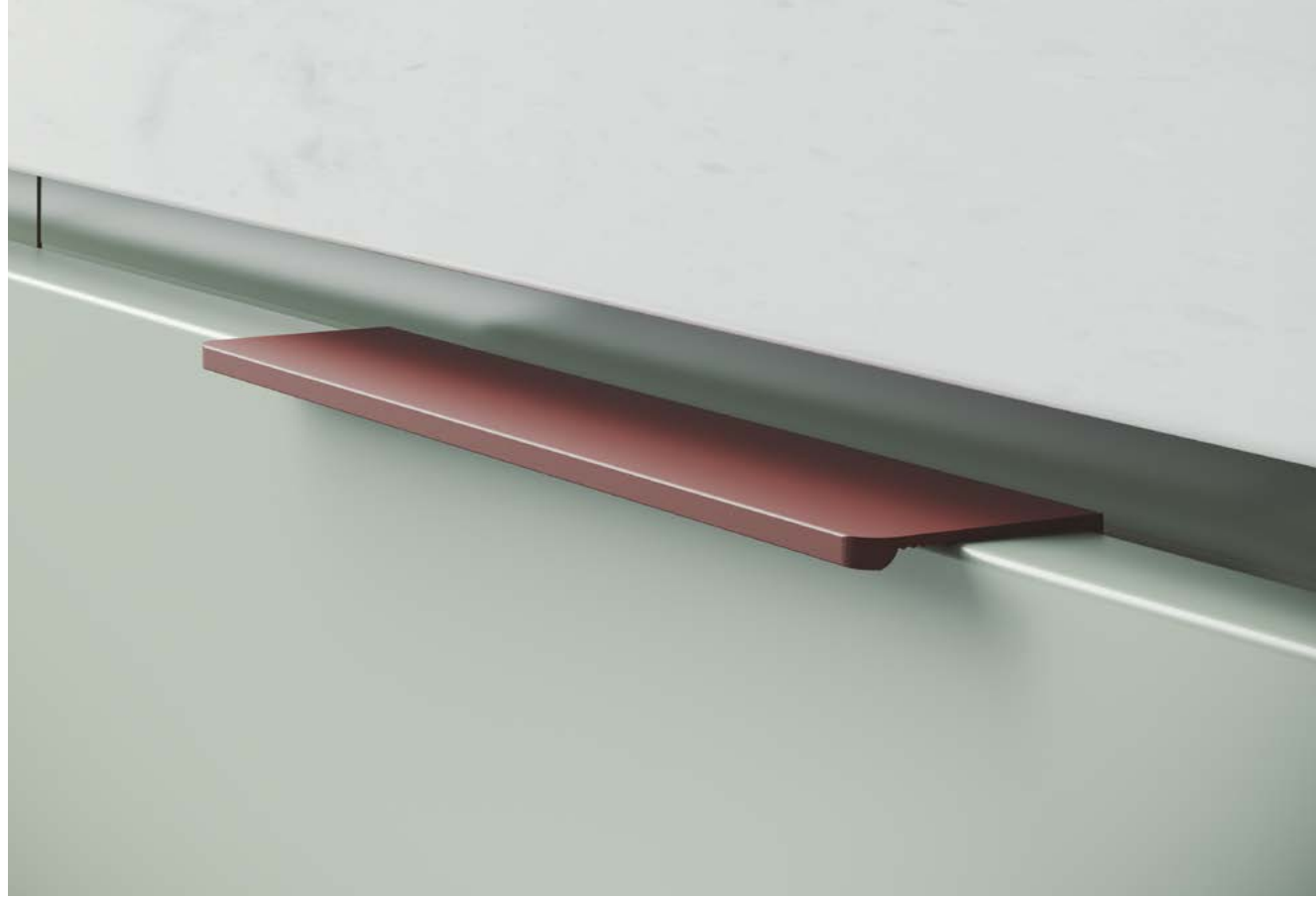
7031



7215



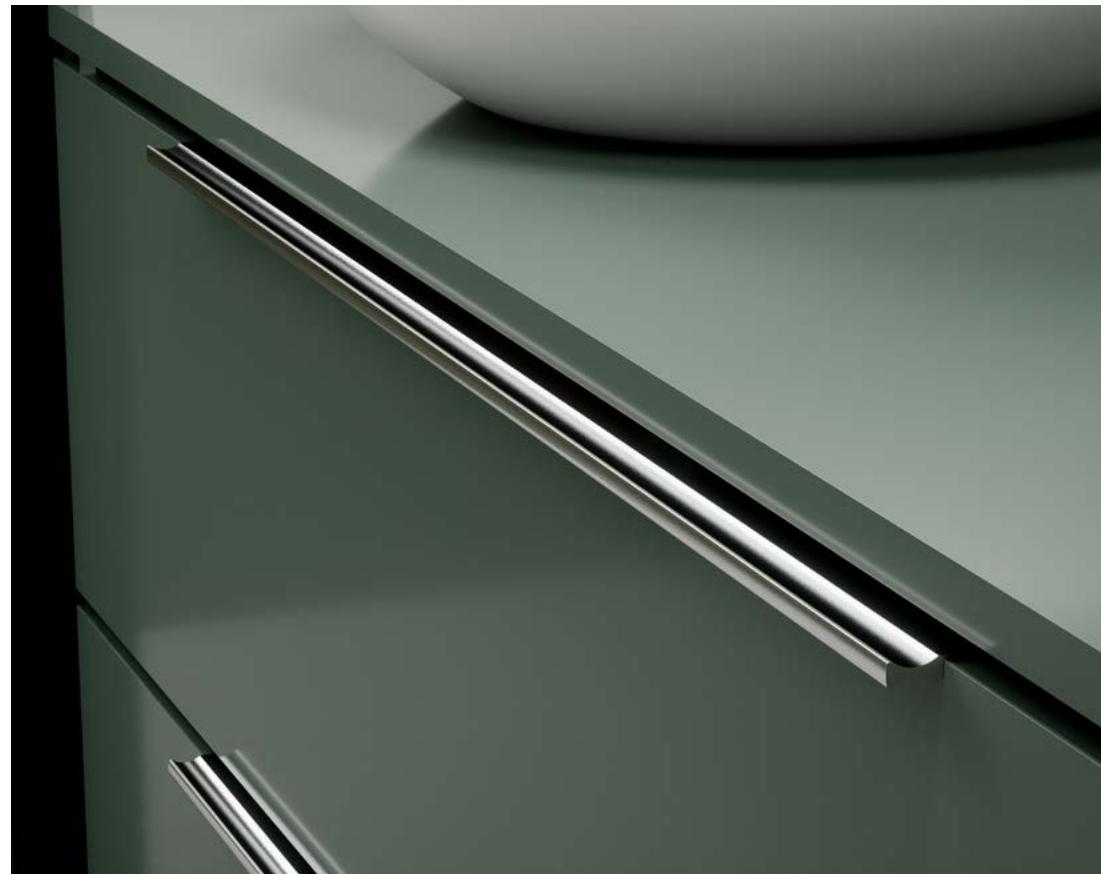
7289



7308



7326



7328



7341



7344



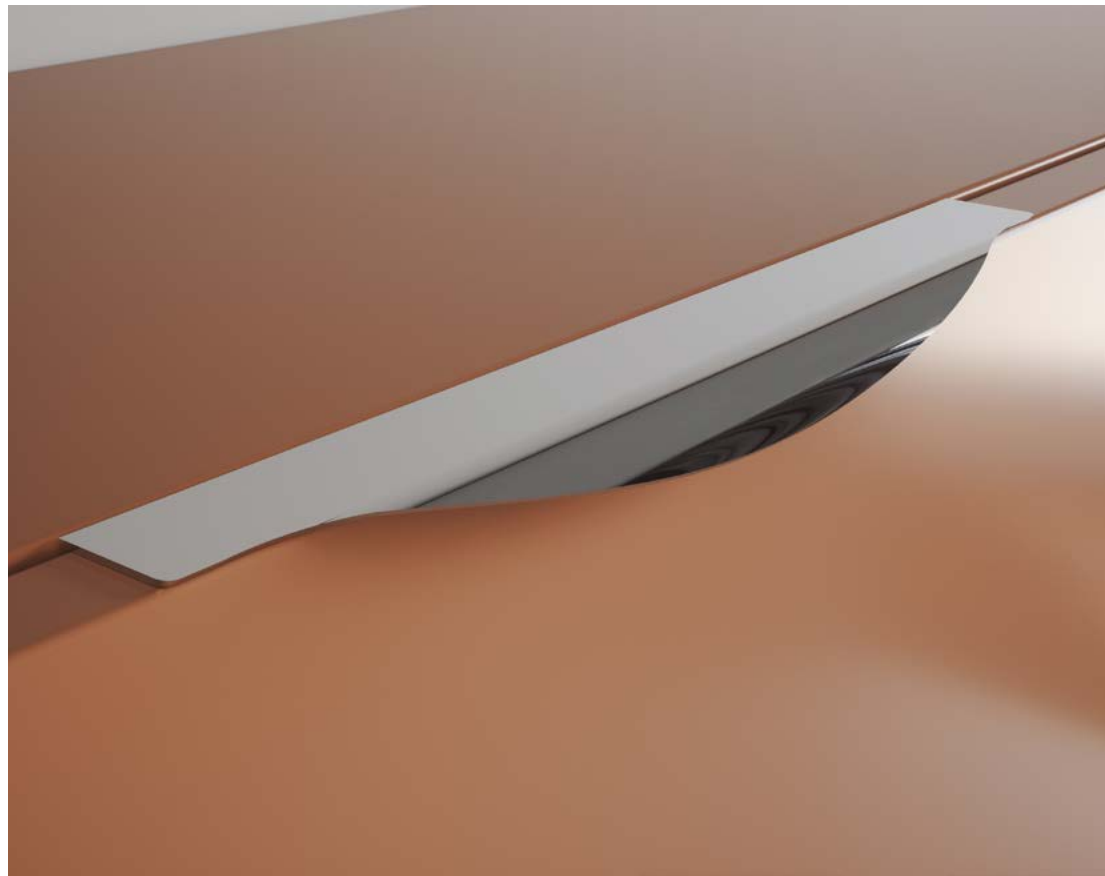
7362



7363



7364



7375 NASS



7382 SAMAR



7384 SAME



7400 NÓMADA



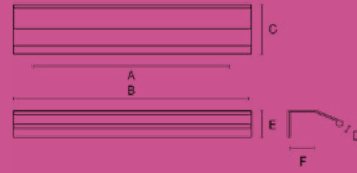
7443 KIRPIK 18MM / 19MM
7452 KIRPIK 16MM



7401 TOQUE

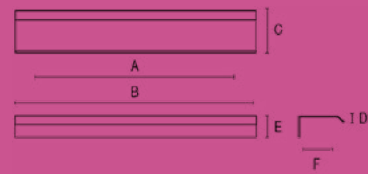
7020

Ref.	A	B	C	D	E	F
7020.0050	32	50	47	6	17	22
7020.0200	64	200	47	6	17	22
7020.0400	192	400	47	6	17	22
7020.0900	320-320	900	47	6	17	22



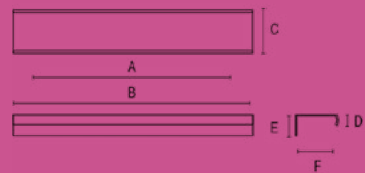
7031

Ref.	A	B	C	D	E	F
7031.0104	64	104	37	7	17	30
7031.0200	64	200	37	7	17	30
7031.0300	128	300	37	7	17	30
7031.0600	192	600	37	7	17	30
7031.3000	0	3000	37	7	17	30



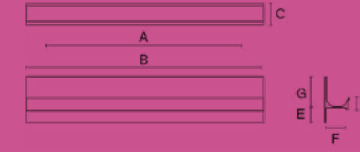
7215

Ref.	A	B	C	D	E	F
7215.0136	64	136	35	9	17	31
7215.0150	64	150	35	9	17	31
7215.0250	128	250	35	9	17	31
7215.0300	128	300	35	9	17	31
7215.0600	192	600	35	9	17	31
7215.3000	0	3000	35	9	17	31



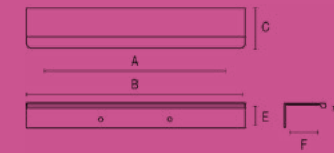
7289

Ref.	A	B	C	D	E	F	G
7289.0298	192	298	21	12	17	17	30
7289.0400	192	400	21	12	17	17	30
7289.3000		3000	21	12	17	17	30



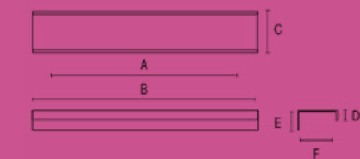
7308

Ref.	A	B	C	D	E	F
7308.0150	96	150	37	4	23	24
7308.0200	128	200	37	4	23	24
7308.0400	320	400	37	4	23	24



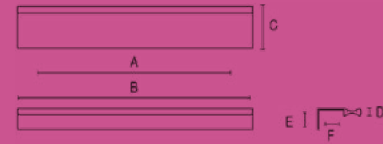
7326

Ref.	A	B	C	D	E	F
7326.0104	64	104	40	9	17	36
7326.0168	64	168	40	9	17	36
7326.0200	160	200	40	9	17	36
7326.0400	320	400	40	9	17	36



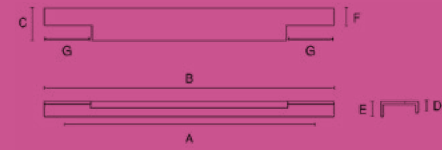
7328

Ref.	A	B	C	D	E	F
7328.0150	64	150	35	6	17	20
7328.0200	128	200	35	6	17	20
7328.0300	128	300	35	6	17	20
7328.0400	192	400	35	6	17	20



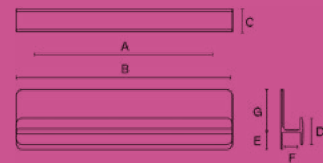
7341

Ref.	A	B	C	D	E	F	G
7341.0247	96-96	247	35	9	17	19	40
7341.0297	128-128	297	35	9	17	19	40
7341.0347	96-96-96	347	35	9	17	19	40
7341.0397	96-96-96	397	35	9	17	19	40
7341.0447	96-96-96	447	35	9	17	19	40
7341.0497	128-128-128	497	35	9	17	19	40
7341.0597	160-160-160	597	35	9	17	19	40
7341.0697	192-192-192	697	35	9	17	19	40
7341.0797	224-224-224	797	35	9	17	19	40
7341.0897	256-256-256	897	35	9	17	19	40
7341.0997	224-224-224-224	997	35	9	17	19	40



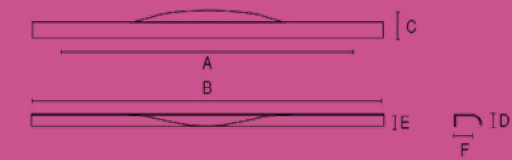
7344

Ref.	A	B	C	D	E	F	G
7344.0200	160	200	24	25	17	20	36
7344.0300	192	300	24	25	17	20	36
7344.0400	320	400	24	25	17	20	36
7344.0500	192-192	500	24	25	17	20	36



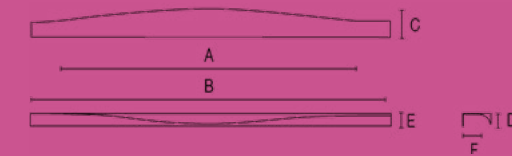
7362

Ref.	A	B	C	D	E	F
7362.0300	192	300	35	16	17	17
7362.0400	320	400	35	16	17	17
7362.0500	320	500	35	16	17	17
7362.0600	192-192	600	35	16	17	17



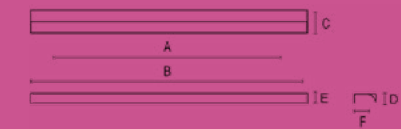
7363

Ref.	A	B	C	D	E	F
7363.0137	96	137	39	14	17	20
7363.0247	96-96	247	39	14	17	20
7363.0297	128-128	297	39	14	17	20
7363.0347	96-96-96	347	39	14	17	20
7363.0397	96-96-96	397	39	14	17	20
7363.0447	96-96-96	447	39	14	17	20
7363.0497	128-128-128	497	39	14	17	20
7363.0597	160-160-160	597	39	14	17	20
7363.0697	192-192-192	697	39	14	17	20
7363.0797	224-224-224	797	39	14	17	20
7363.0897	192-320-192	897	39	14	17	20
7363.0997	224-224-224-224	997	39	14	17	20



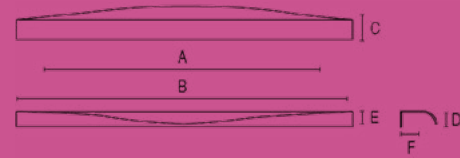
7364

Ref.	A	B	C	D	E	F
7364.0300	192	300	39	14	17	20
7364.0400	320	400	39	14	17	20
7364.0500	320	500	39	14	17	20
7364.0600	192-192	600	39	14	17	20



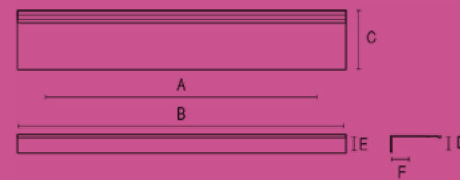
7375 NASS

Ref.	A	B	C	D	E	F
7375.0137	96	137	39	16	17	20
7375.0247	96-96	247	39	16	17	20
7375.0297	128-128	297	39	16	17	20
7375.0347	96-96-96	347	39	16	17	20
7375.0397	96-96-96	397	39	16	17	20
7375.0447	96-96-96	447	39	16	17	20
7375.0497	128-128-128	497	39	16	17	20
7375.0597	160-160-160	597	39	16	17	20
7375.0697	192-192-192	697	39	16	17	20
7375.0797	224-224-224	797	39	16	17	20
7375.0897	256-256-256	897	39	16	17	20
7375.0997	224-224-224-224	997	39	16	17	20



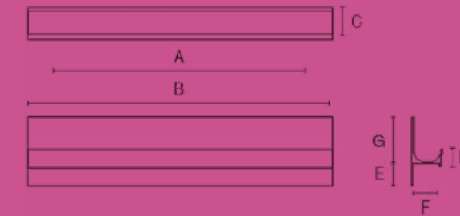
7382 SAMAR

Ref.	A	B	C	D	E	F
7382.0050	32	50	52	3	17	40
7382.0200	128	200	52	3	17	40
7382.0300	128	300	52	3	17	40
7382.0400	192	400	52	3	17	40
7382.0900	320-320	900	52	3	17	40



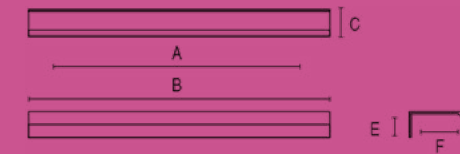
7384 SAME

Ref.	A	B	C	D	E	F	G
7384.0247	96-96	247	24	12	17	20	30
7384.0297	128-128	297	24	12	17	20	30
7384.0347	96-96-96	347	24	12	17	20	30
7384.0397	96-96-96	397	24	12	17	20	30
7384.0447	96-96-96	447	24	12	17	20	30
7384.0497	128-128-128	497	24	12	17	20	30
7384.0597	160-160-160	597	24	12	17	20	30
7384.0697	192-192-192	697	24	12	17	20	30
7384.0797	224-224-224	797	24	12	17	20	30
7384.0897	256-256-256	897	24	12	17	20	30
7384.0997	224-224-224-224	997	24	12	17	20	30
7384.1197	224-224-224-224	1197	24	12	17	20	30
7384.3000	-	3000	24	12	17	20	30



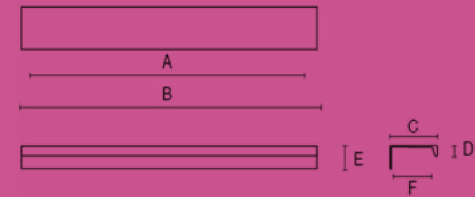
7400 NÓMADA

Ref.	A	B	C	D	E	F
7400.0150	96	150	40	9	17	30
7400.0260	192	260	40	9	17	30
7400.0400	320	400	40	9	17	30
7400.0600	320	600	40	9	17	30
7400.0900	256-160-160-256	900	40	9	17	30



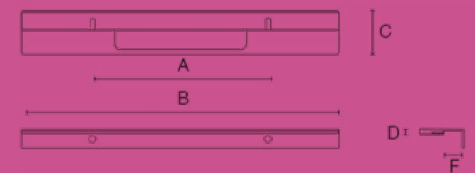
7401 TOQUE

Ref.	A	B	C	D	E	F
7401.0147	128	147	37	8	17	33
7401.0247	192	247	37	8	17	33
7401.0347	192	347	37	8	17	33
7401.0447	320	447	37	8	17	33
7401.0697	128-320-128	697	37	8	17	33



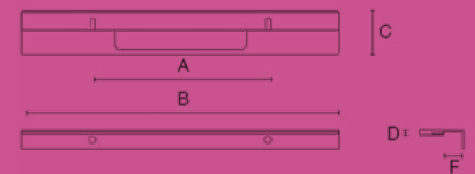
7443 KIRPIK 19MM

Ref.	A	B	C	D	E	F
7443.0080	32	80	40	4	17	20
7443.0200	128	200	40	4	17	20
7443.0280	192	280	40	4	17	20
7443.0470.	160-160	470	40	4	17	20
7443.0600	320	600	40	4	17	20
7443.0800	128-320-128	800	40	4	17	20



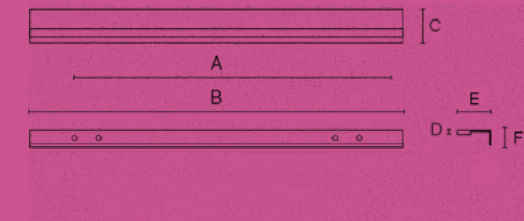
7452 KIRPIK 16MM

Ref.	A	B	C	D	E	F
7452.0200	128	200	40	4	17	17
7452.0400	160-160	400	40	4	17	17
7452.0600	320	600	40	4	17	17
7452.0800	128-320-128	800	40	4	17	17



7458 DENTO

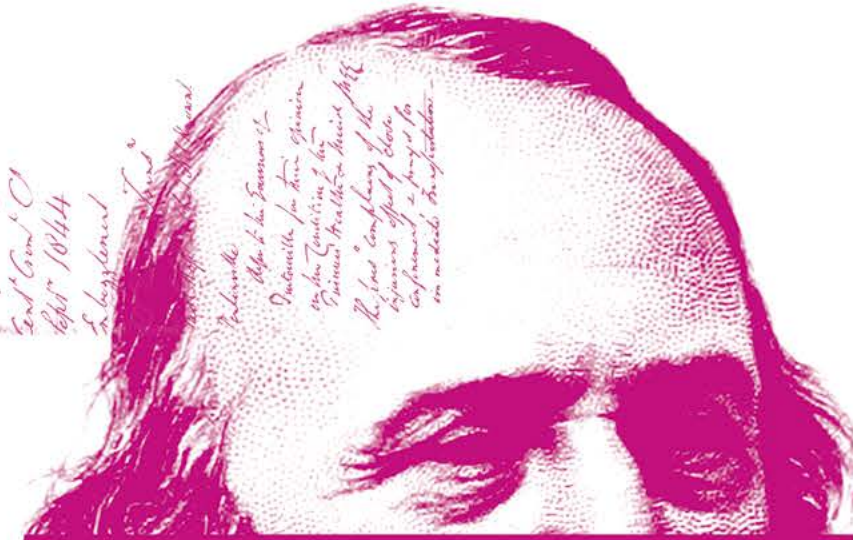
Ref.	A	B	C	D	E	F
7458.0150	96	150	40	4	17	23
7458.0200	128	200	40	4	17	23
7458.0300	192	300	40	4	17	23
7458.0400	320	400	40	4	17	23



▲
▲
▲

RECESSED

EMBUTIDOS / RECESSED / ENCASTRES





3032 VALO





3A56



3013 CUNA



3020



3021

100

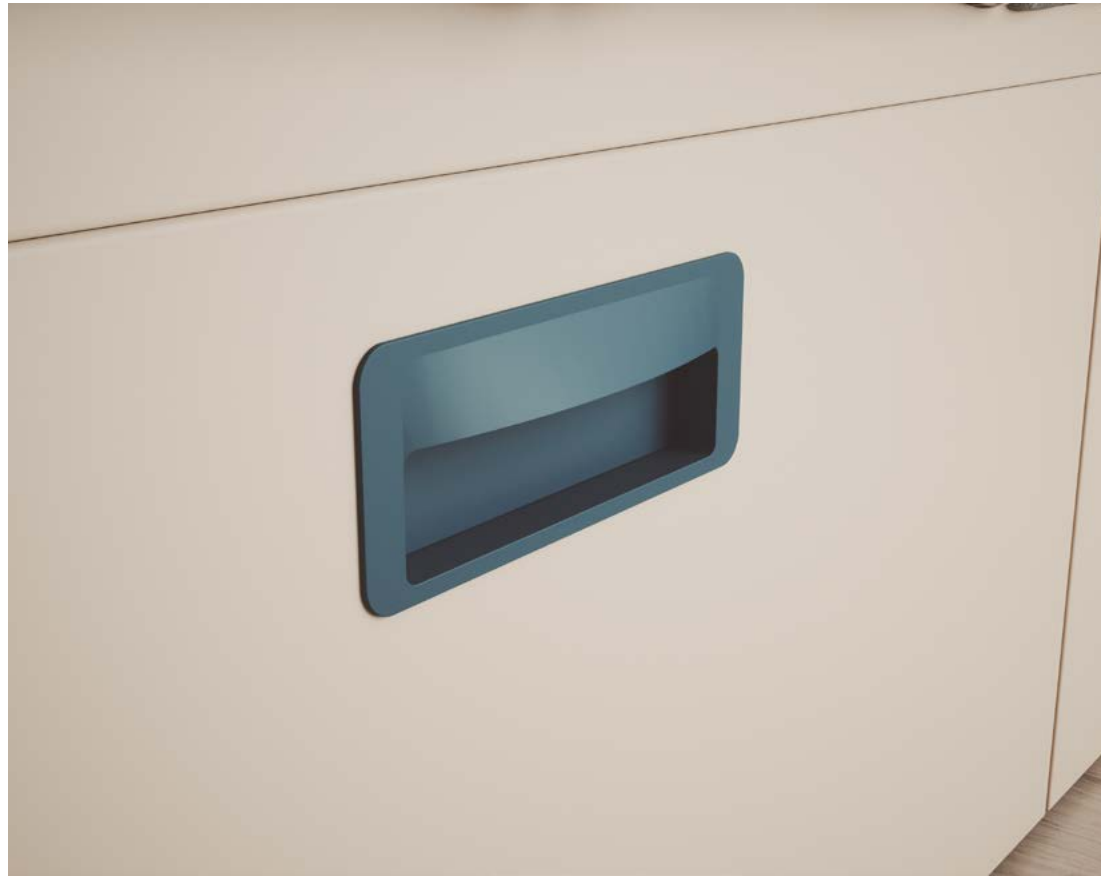


3022

101



3023



3026



3031



3028 RAY



3029 TAY



3030



3027 TOYA



7234



7248

110



111



7297

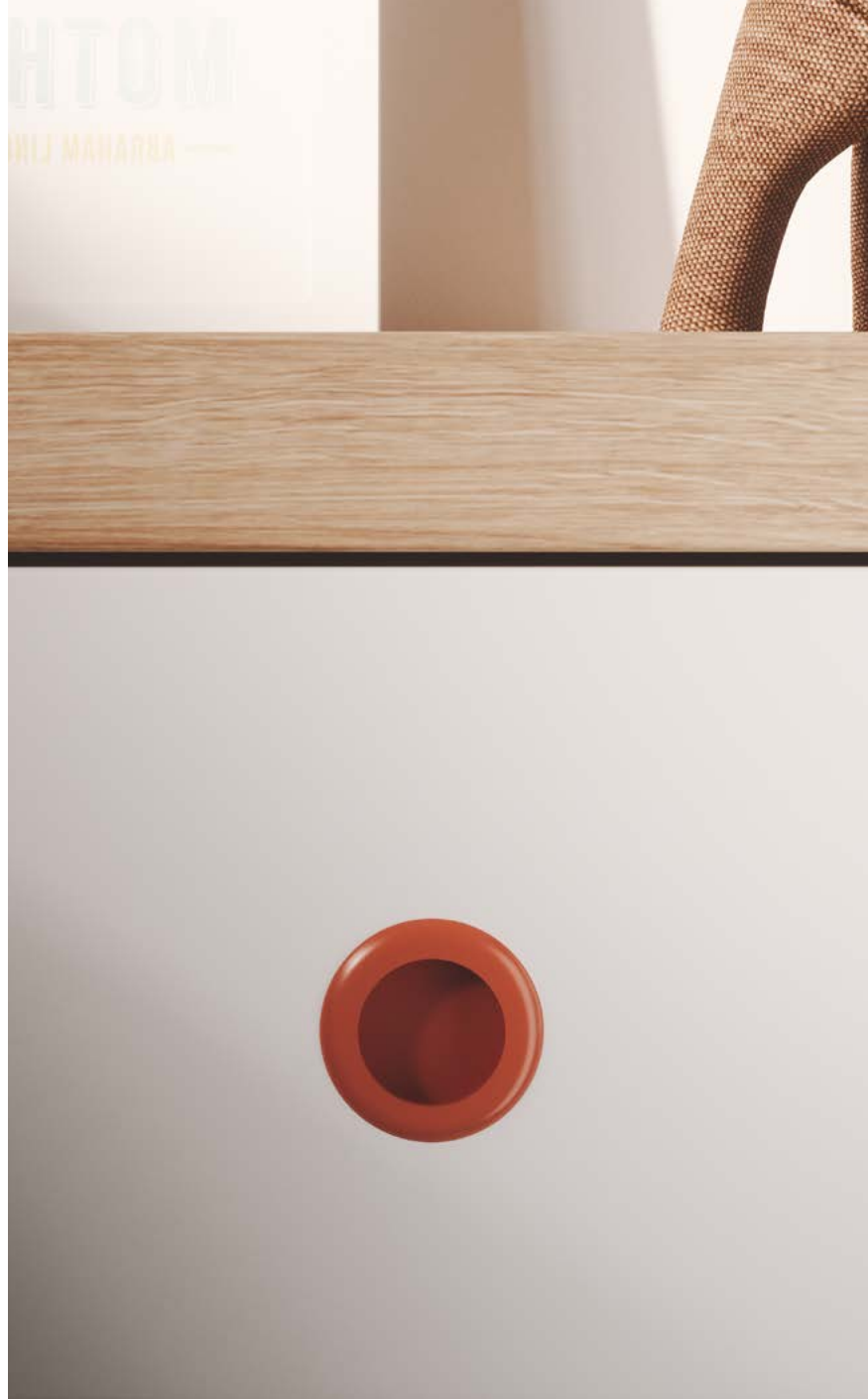
7334



7365



7370 TOME



K301



7399 ATLANTA



7419 STAND



7433 STAND

118

119



7434 STAND



7435 STAND

120



7442 BOTTO

121



122



123



7459 PÍSCOLA

124



7472 COPLO

125



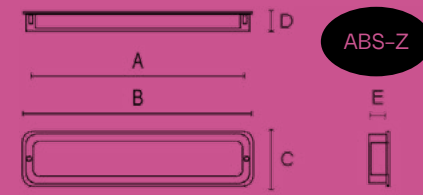
7744



7478 BENDER

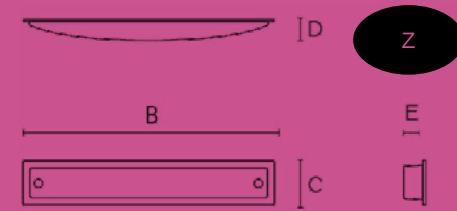
3A56

Ref.	A	B	C	D	E
3A56.0150	140	151	36	13	11



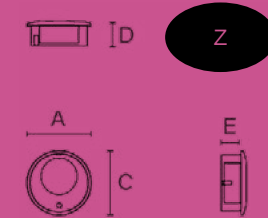
3013 CUNA

Ref.	A	B	C	D	E
3013.0104	-	100	18	9	7



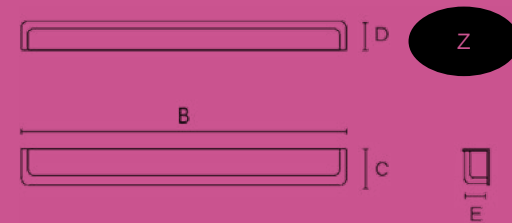
3020

Ref.	A	B	C	D	E
3020.0040	-	40	40	16	12



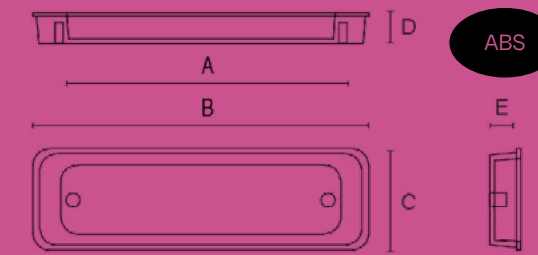
3021

Ref.	A	B	C	D	E
3021.0100	-	100	20	15	11
3021.0180	-	180	20	15	11



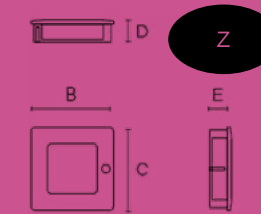
3022

Ref.	A	B	C	D	E
3022.0165	128	165	50	15	13



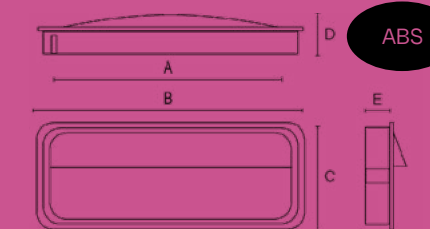
3023

Ref.	A	B	C	D	E
3023.0060	-	60	60	16	13



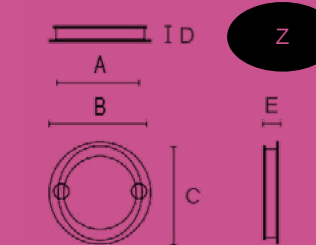
3026

Ref.	A	B	C	D	E
3026.0128	128	143	57	21	13



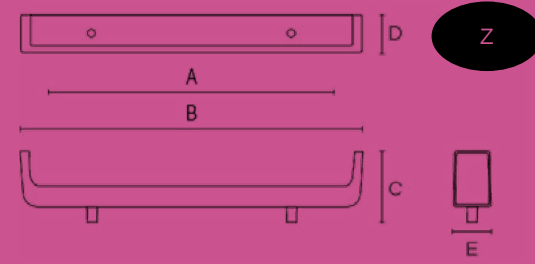
3027 TOYA

Ref.	A	B	C	D	E
3027.0090	78	90	90	14	11



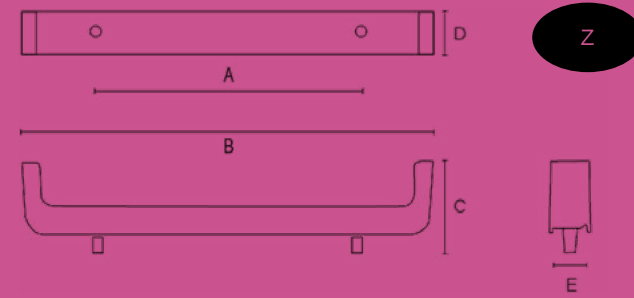
3028 RAY

Ref.	A	B	C	D	E
3028.0220	128	220	35	24	20



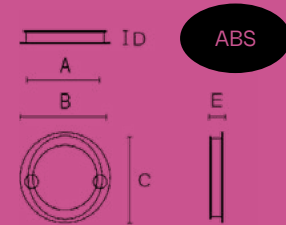
3029 TAY

Ref.	A	B	C	D	E
3029.0200	128	200	35	21	17



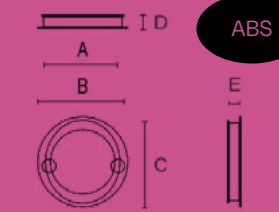
3030 TOYA

Ref.	A	B	C	D	E
3030.0090	84	90	90	14	12



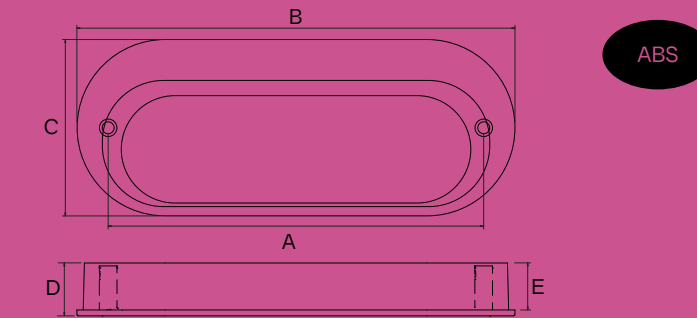
3031 OVNI

Ref.	A	B	C	D	E
3031.090	78	92	92	18	12



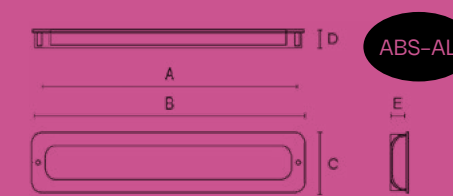
3032 VALO

Ref.	A	B	C	D	E
3032.0128	128	149	60	18	14



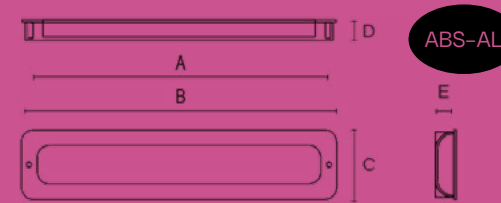
7234

Ref.	A	B	C	D	E
7234.0128	128	139	50	15	13
7234.0192	192	203	50	15	13
7234.0256	256	267	50	15	13
7234.0576	576	587	50	15	13



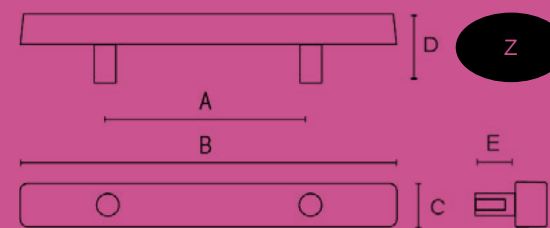
7248

Ref.	A	B	C	D	E
7248.0096	96	106	39	15	12
7248.0128	128	138	39	15	12
7248.0160	160	170	39	15	12
7248.0320	320	330	39	15	12



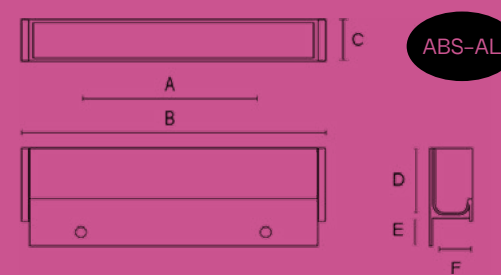
7297

Ref.	A	B	C	D	E
7297.0060	32	60	7	11	6



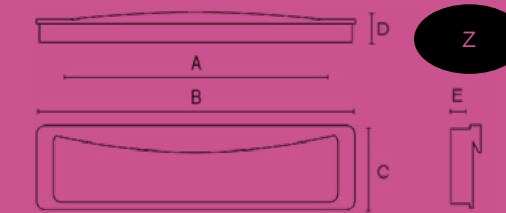
7334

Ref.	A	B	C	D	E	F
7334.0199	160	207	22	12	18	20
7334.0279	160	287	22	12	18	20
7334.0492	320	500	22	12	18	20
7334.0792	320-320	800	22	12	18	20



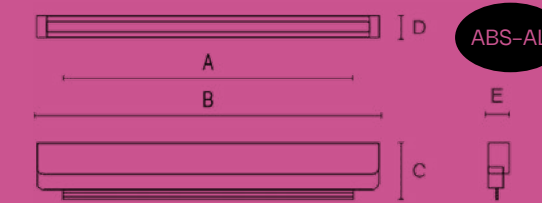
7365

Ref.	A	B	C	D	E
7365.0160	160	173	47	17	11



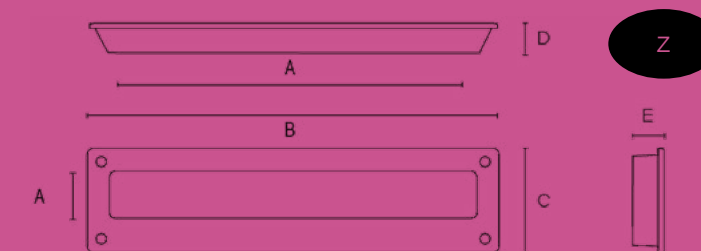
7370 TOME

Ref.	A	B	C	D	E
7370.0220	115	220	51	23	20
7370.0380	315	380	51	23	20
7370.0500	435	500	51	23	20



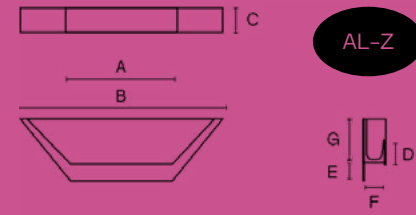
7399 ATLANTA

Ref.	A	B	C	D	E
7399.0190	160-32	189	48	15	12



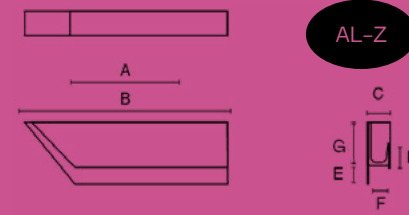
7419 STAND

Ref.	A	B	C	D	E	F	G
7419.0170	32	170	20	12	15	17	32
7419.0250	128	250	20	12	15	17	32



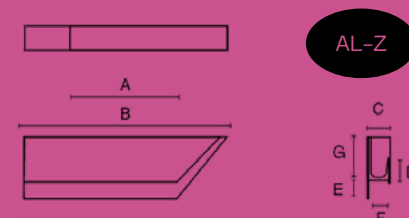
7433 STAND

Ref.	A	B	C	D	E	F	G
7433.0170	64	170	20	12	15	17	32
7433.0250	128	250	20	12	15	17	32



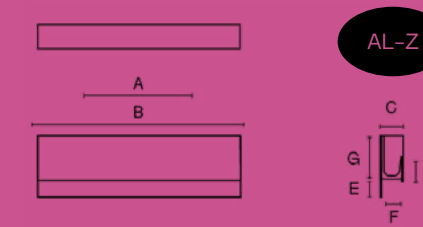
7434 STAND

Ref.	A	B	C	D	E	F	G
7434.0170	64	170	20	12	15	17	32
7434.0250	128	250	20	12	15	17	32



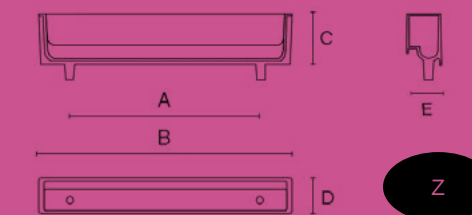
7435 STAND

Ref.	A	B	C	D	E	F	G
7435.0170	128	170	20	12	15	17	32
7435.0250	128	250	20	12	15	17	32



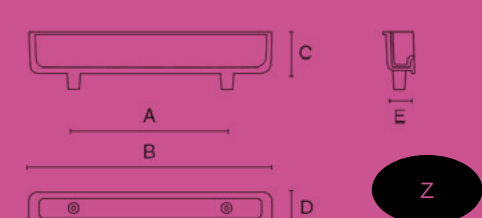
7442 BOTTO

Ref.	A	B	C	D	E
7442.0170	128	170	26	23	21
7442.0240	192	240	26	23	21



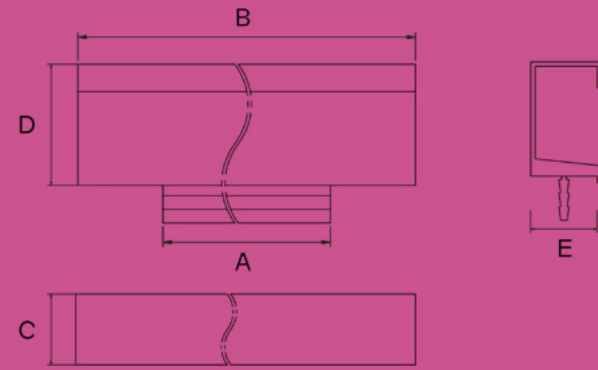
7459 PÍSCOLA

Ref.	A	B	C	D	E
7459.0150	96	150	26	19	16
7459.0230	192	231	26	19	16



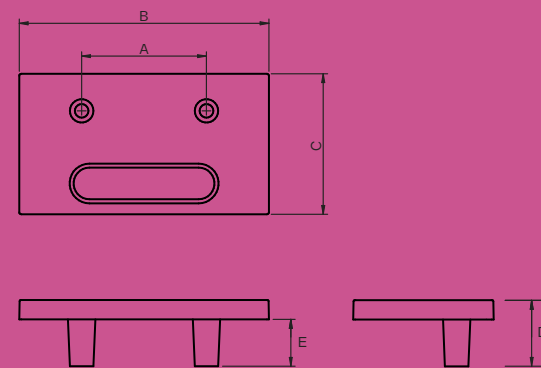
7472 COPLO

Ref.	A	B	C	D	E
7472.0200	140	200	21	35	19
7472.0400	340	400	21	35	19
7472.0600	540	600	21	35	19
7472.0800	740	800	21	35	19
7472.1000	940	1000	21	35	19



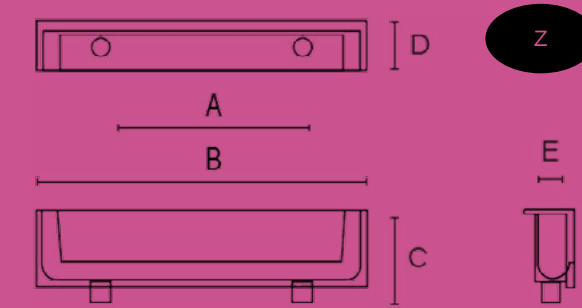
7478 BENDER

Ref.	A	B	C	D	E
7478.0064	32	64	36	17	12



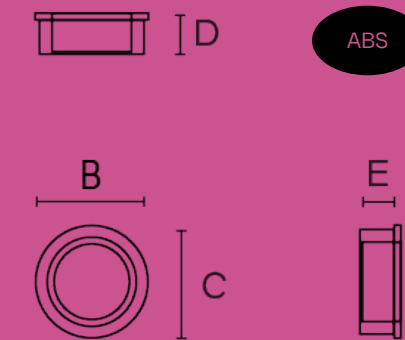
7744

Ref.	A	B	C	D	E
7744.0106	64	105	25	16	15



K301

Ref.	A	B	C	D	E
K301.0040	-	40	40	10	8



The word "HARPOON" is rendered in a large, bold, black sans-serif font. The letters "H", "A", "R", "P", and "N" are solid black. The first "O" is a solid magenta circle. The second "O" is a white circle with a black outline, containing a magenta harpoon graphic. The "N" is solid black and has three horizontal bands of magenta hatching above it. The background features a magenta-tinted image of a sailboat's rigging and sails on the left, and a smaller, fainter image of a ship's rigging in the center.

HARPOON

AL ARPÓN ALUMINIO / HARPOON ALUMINIUM / HARPON ALUMINIUM

140



7412 HIRIO

141



7193 TURIA

142



7212

143



7235



7316 WAVE



7327



7329



7366



7389 TIMMI



7390 THOR

150



7393 TUI

151



7402 ROM



7409 JOTA



7411 TECOS

154



7170

155



7426 NORMA



7423 ESCO



7436 TALOS

158



7462 ELE

159



7474 LLECO-2

160



161



7472 COPLO

162



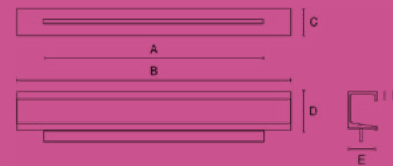
7477 LLECO

163



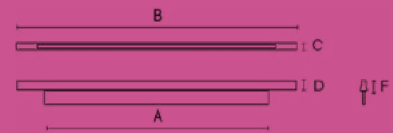
7170

Ref.	A	B	C	D	E	F
7170.0247	207	247	21	30	20	7
7170.0297	257	297	21	30	20	7
7170.0347	307	347	21	30	20	7
7170.0397	357	397	21	30	20	7
7170.0447	407	447	21	30	20	7
7170.0497	457	497	21	30	20	7
7170.0597	557	597	21	30	20	7
7170.0697	657	697	21	30	20	7
7170.0797	757	797	21	30	20	7
7170.0897	857	897	21	30	20	7
7170.0997	957	997	21	30	20	7
7170.1197	1157	1197	21	30	20	7
7170.3000	-	3000	21	30	20	7



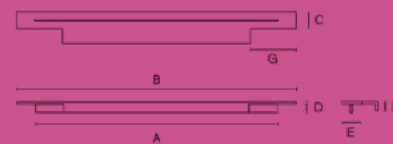
7193 TURIA

Ref.	A	B	C	D	E	F
7193.0290	250	290	5	7	-	7
7193.0390	350	390	5	7	-	7
7193.0560	520	560	5	7	-	7



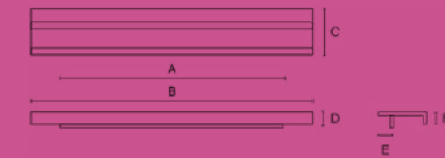
7212

Ref.	A	B	C	D	E	F	G
7212.0247	207	247	36	10	20	10	50
7212.0297	257	297	36	10	20	10	50
7212.0347	307	347	36	10	20	10	50
7212.0397	357	397	36	10	20	10	50
7212.0447	407	447	36	10	20	10	50
7212.0497	457	497	36	10	20	10	50
7212.0597	557	597	36	10	20	10	50
7212.0697	657	697	36	10	20	10	50
7212.0797	757	797	36	10	20	10	50
7212.0897	857	897	36	10	20	10	50
7212.0997	957	997	36	10	20	10	50
7212.1197	1157	1197	36	10	20	10	50



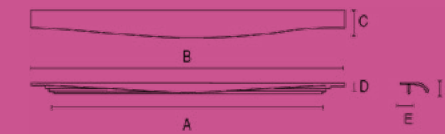
7235

Ref.	A	B	C	D	E	F
7235.0247	207	247	36	10	20	10
7235.0297	257	297	36	10	20	10
7235.0347	307	347	36	10	20	10
7235.0397	357	397	36	10	20	10
7235.0447	407	447	36	10	20	10
7235.0497	457	497	36	10	20	10
7235.0597	557	597	36	10	20	10
7235.0697	657	697	36	10	20	10
7235.0797	757	797	36	10	20	10
7235.0897	857	897	36	10	20	10
7235.0997	957	997	36	10	20	10
7235.1197	1157	1197	36	10	20	10



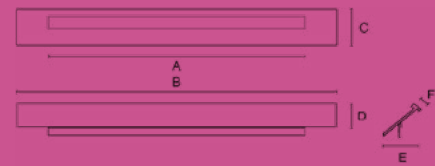
7316 WAVE

Ref.	A	B	C	D	E	F
7316.0247	197	247	38	15	20	15
7316.0297	247	297	38	15	20	15
7316.0347	297	347	38	15	20	15
7316.0397	347	397	38	15	20	15
7316.0447	397	447	38	15	20	15
7316.0497	447	497	38	15	20	15
7316.0597	547	597	38	15	20	15
7316.0697	647	697	38	15	20	15
7316.0797	747	797	38	15	20	15
7316.0897	847	897	38	15	20	15
7316.0997	947	997	38	15	20	15
7316.1197	1147	1197	38	15	20	15



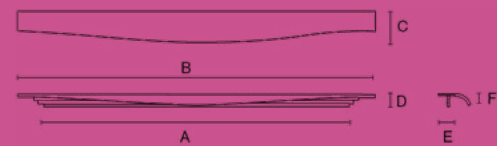
7327

Ref.	A	B	C	D	E	F
7327.0247	207	247	29	6	20	6
7327.0297	257	297	29	6	20	6
7327.0347	307	347	29	6	20	6
7327.0397	357	397	29	6	20	6
7327.0447	407	447	29	6	20	6
7327.0497	457	497	29	6	20	6
7327.0597	557	597	29	6	20	6
7327.0697	657	697	29	6	20	6
7327.0797	757	797	29	6	20	6
7327.0897	857	897	29	6	20	6
7327.0997	957	997	29	6	20	6
7327.1197	1157	1197	29	6	20	6



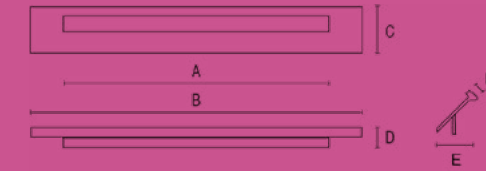
7329

Ref.	A	B	C	D	E	F
7329.0247	207	247	35	15	17	15
7329.0297	257	297	35	15	17	15
7329.0347	307	347	35	15	17	15
7329.0397	357	397	35	15	17	15
7329.0447	407	447	35	15	17	15
7329.0497	457	497	35	15	17	15
7329.0597	557	597	35	15	17	15
7329.0697	657	697	35	15	17	15
7329.0797	757	797	35	15	17	15
7329.0897	857	897	35	15	17	15
7329.0997	957	997	35	15	17	15
7329.1197	1157	1197	35	15	17	15



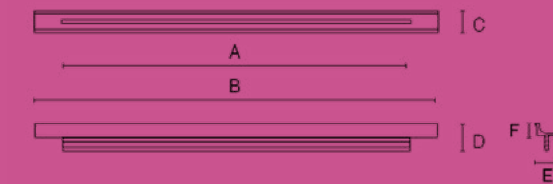
7366

Ref.	A	B	C	D	E	F
7366.0462	402	462	21	7	16	7
7366.0562	502	562	21	7	16	7
7366.0762	702	762	21	7	16	7



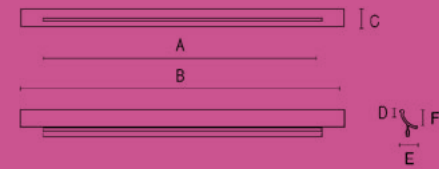
7389 TIMMI

Ref.	A	B	C	D	E	F
7389.0247	207	247	18	1	15	10
7389.0297	257	297	18	1	15	10
7389.0347	307	347	18	1	15	10
7389.0397	357	397	18	1	15	10
7389.0447	407	447	18	1	15	10
7389.0497	457	497	18	1	15	10
7389.0597	557	597	18	1	15	10
7389.0697	657	697	18	1	15	10
7389.0797	757	797	18	1	15	10
7389.0897	857	897	18	1	15	10
7389.0997	957	997	18	1	15	10
7389.1197	1157	1197	18	1	15	10
7389.3000	-	3000	18	1	15	10



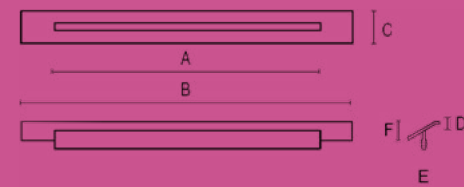
7390 THOR

Ref.	A	B	C	D	E	F
7390.0247	207	247	17	4	17	16
7390.0297	257	297	17	4	17	16
7390.0347	307	347	17	4	17	16
7390.0397	357	397	17	4	17	16
7390.0447	407	447	17	4	17	16
7390.0497	457	497	17	4	17	16
7390.0597	557	597	17	4	17	16
7390.0697	657	697	17	4	17	16
7390.0797	757	797	17	4	17	16
7390.0897	857	897	17	4	17	16
7390.0997	957	997	17	4	17	16
7390.1197	1157	1197	17	4	17	16
7390.3000	-	3000	17	4	17	16



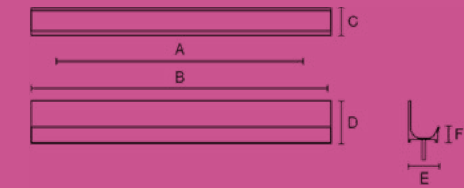
7393 TUI

Ref.	A	B	C	D	E	F
7393.0247	207	247	20	2	19	19
7393.0297	257	297	20	2	19	19
7393.0347	307	347	20	2	19	19
7393.0397	357	397	20	2	19	19
7393.0447	407	447	20	2	19	19
7393.0497	457	497	20	2	19	19
7393.0597	557	597	20	2	19	19
7393.0697	657	697	20	2	19	19
7393.0797	757	797	20	2	19	19
7393.0897	857	897	20	2	19	19
7393.0997	957	997	20	2	19	19
7393.1197	1157	1197	20	2	19	19
7393.3000	-	3000	20	2	19	19



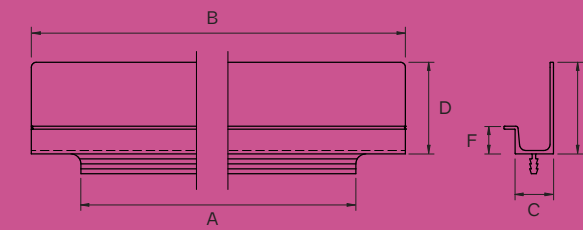
7402 ROM

Ref.	A	B	C	D	E	F
7402.0247	187	-	22	38	19	12
7402.0297	237	-	22	38	19	12
7402.0347	287	-	22	38	19	12
7402.0397	337	-	22	38	19	12
7402.0447	387	-	22	38	19	12
7402.0497	437	-	22	38	19	12
7402.0597	537	-	22	38	19	12
7402.0697	637	-	22	38	19	12
7402.0797	737	-	22	38	19	12
7402.0897	837	-	22	38	19	12
7402.0997	937	-	22	38	19	12
7402.1197	1137	-	22	38	19	12
7402.3000	-	-	22	38	19	12



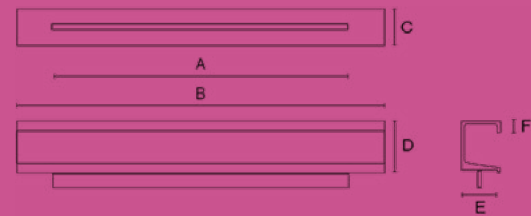
7409 JOTA

Ref.	A	B	C	D	E	F
7409.0247	207	247	20	37	20	11
7409.0297	257	297	20	37	20	11
7409.0347	307	347	20	37	20	11
7409.0397	357	397	20	37	20	11
7409.0447	407	447	20	37	20	11
7409.0497	457	497	20	37	20	11
7409.0597	557	597	20	37	20	11
7409.0697	657	697	20	37	20	11
7409.0797	757	797	20	37	20	11
7409.0897	857	897	20	37	20	11
7409.0997	957	997	20	37	20	11
7409.1197	1157	1197	20	37	20	11
7409.3000	-	3000	20	37	20	11



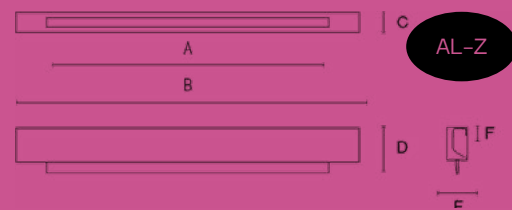
7411 TECOS

Ref.	A	B	C	D	E	F
7411.0247	187	247	22	37	19	14
7411.0297	237	297	22	37	19	14
7411.0347	287	347	22	37	19	14
7411.0397	337	397	22	37	19	14
7411.0447	387	447	22	37	19	14
7411.0497	437	497	22	37	19	14
7411.0597	537	597	22	37	19	14
7411.0697	637	697	22	37	19	14
7411.0797	737	797	22	37	19	14
7411.0897	837	897	22	37	19	14
7411.0997	937	997	22	37	19	14
7411.1197	1137	1197	22	37	19	14
7411.3000	-	3000	22	37	19	14



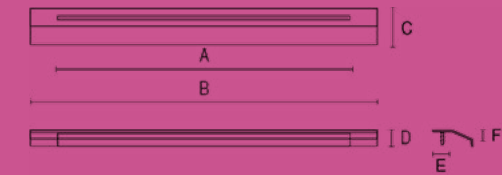
7412 HIRIO

Ref.	A	B	C	D	E	F
7412.0247	187	247	19	32	19	8
7412.0297	237	297	19	32	19	8
7412.0347	287	347	19	32	19	8
7412.0397	337	397	19	32	19	8
7412.0447	387	447	19	32	19	8
7412.0497	437	497	19	32	19	8
7412.0597	537	597	19	32	19	8
7412.0697	637	697	19	32	19	8
7412.0797	737	797	19	32	19	8
7412.0897	837	897	19	32	19	8
7412.0997	937	997	19	32	19	8
7412.1197	1137	1197	19	32	19	8
7412.3000	-	3000	19	32	19	8



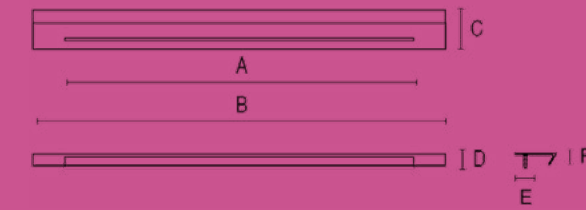
7423 ESCO

Ref.	A	B	C	D	E	F
7423.0247	187	247	41	17	20	17
7423.0297	237	297	41	17	20	17
7423.0347	287	347	41	17	20	17
7423.0397	337	397	41	17	20	17
7423.0447	387	447	41	17	20	17
7423.0497	437	497	41	17	20	17
7423.0597	537	597	41	17	20	17
7423.0697	637	697	41	17	20	17
7423.0797	737	797	41	17	20	17
7423.0897	837	897	41	17	20	17
7423.0997	937	997	41	17	20	17
7423.1197	1137	1197	41	17	20	17
7423.3000	-	3000	41	17	20	17



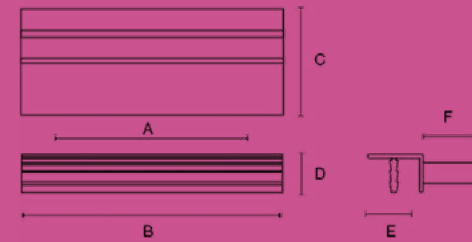
7426 NORMA

Ref.	A	B	C	D	E	F
7426.0247	187	247	38	11	20	11
7426.0297	237	297	38	11	20	11
7426.0347	287	347	38	11	20	11
7426.0397	337	397	38	11	20	11
7426.0447	287	447	38	11	20	11
7426.0497	437	497	38	11	20	11
7426.0597	537	597	38	11	20	11
7426.0697	637	697	38	11	20	11
7426.0797	737	797	38	11	20	11
7426.0897	837	897	38	11	20	11
7426.0997	937	997	38	11	20	11
7426.1197	1137	1197	38	11	20	11
7426.3000	-	3000	38	11	20	11



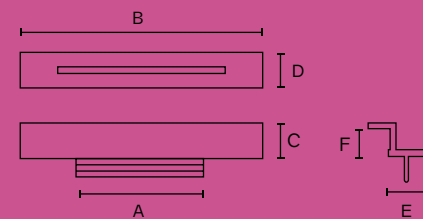
7436 TALOS

Ref.	A	B	C	D	E	F
7436.0247	187	247	41	14	19	20
7436.0347	237	297	41	14	19	20
7436.0397	287	347	41	14	19	20
7436.0447	337	397	41	14	19	20
7436.0497	387	447	41	14	19	20
7436.0597	437	497	41	14	19	20
7436.0697	537	597	41	14	19	20
7436.0797	637	697	41	14	19	20
7436.0897	737	797	41	14	19	20
7436.0997	837	897	41	14	19	20
7436.1197	937	997	41	14	19	20
7436.3000	1137	1197	41	14	19	20
		3000	41	14	19	20



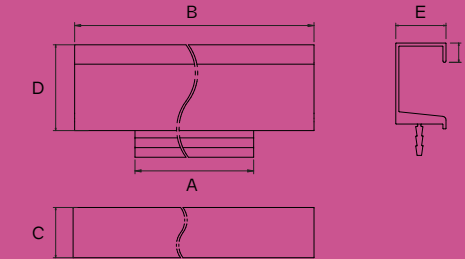
7462 ELE

Ref.	A	B	C	D	E	F
7462.0247	187	247	20	11	20	11
7462.0347	237	297	20	11	20	11
7462.0397	287	347	20	11	20	11
7462.0447	337	397	20	11	20	11
7462.0497	387	447	20	11	20	11
7462.0597	437	497	20	11	20	11
7462.0697	537	597	20	11	20	11
7462.0797	637	697	20	11	20	11
7462.0897	737	797	20	11	20	11
7462.0997	837	897	20	11	20	11
7462.1197	937	997	20	11	20	11
7462.3000	1137	1197	20	11	20	11
		3000	20	11	20	11



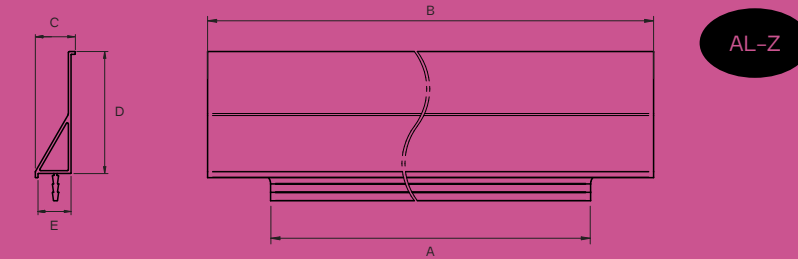
7472 COPLO *

Ref.	A	B	C	D	E	F
7472.0200*	140	200	21	35	19	8
7472.0400	340	400	21	35	19	8
7472.0600	540	600	21	35	19	8
7472.0800	740	800	21	35	19	8
7472.1000	940	1000	21	35	19	8
7472.2600	-	2600	21	35	19	8



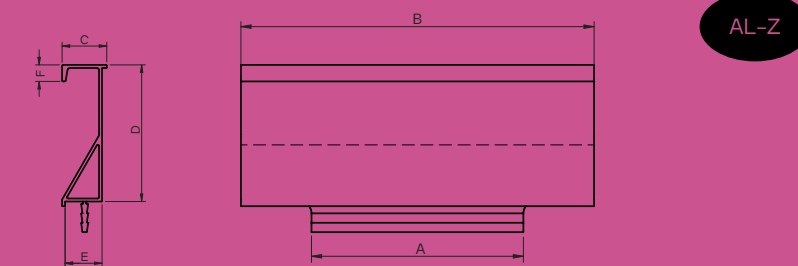
7474 LLECO *

Ref.	A	B	C	D	E	F
7474.0150	90	150	19	56	19	
7474.0600	540	600	19	56	19	



7477 LLECO-2 *

Ref.	A	B	C	D	E	F
7477.0150	90	150	19	56	19	7
7477.0600	540	600	19	56	19	7

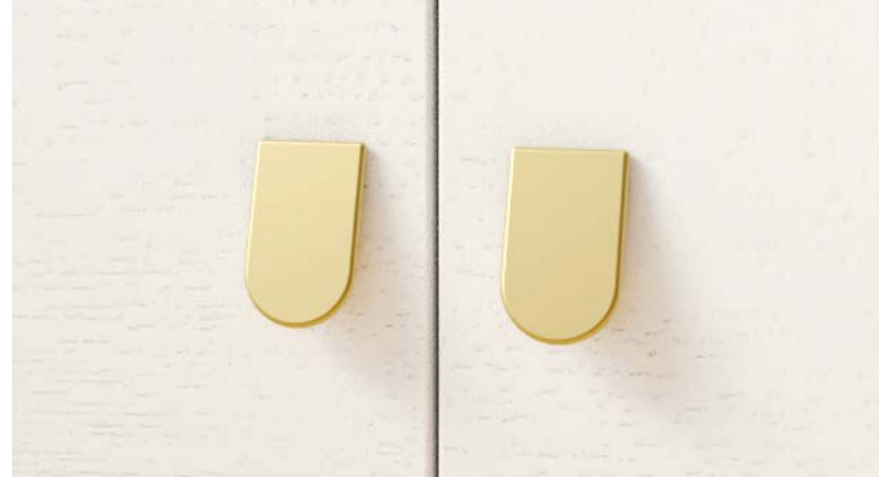


* Las medidas de largo no incluyen las tapas de terminación.
Length measurements do not include end caps.
Les mesures de longueur ne comprennent pas les embouts.

DESIGN Z



long in unum per pinguis
tun di ferre ut bladiuam et am
tuo antea ce tate dicitur septu
tuo propa dno de in mudi est re
sunt quos embe vider eorum dno
Eben d. tuis etia fueram nare su
est tibus luno opudo dlogre
pate oie 6 yto oare vigeo frap
lora vni et ponal ab ho ponal q
etiol eua emman ea qd pte d. oia
des te dnt ammo vris et pambita
tubno vrbidre tibus vaxre dte



1049 TAÑA



7001



7003 RHONE



7004



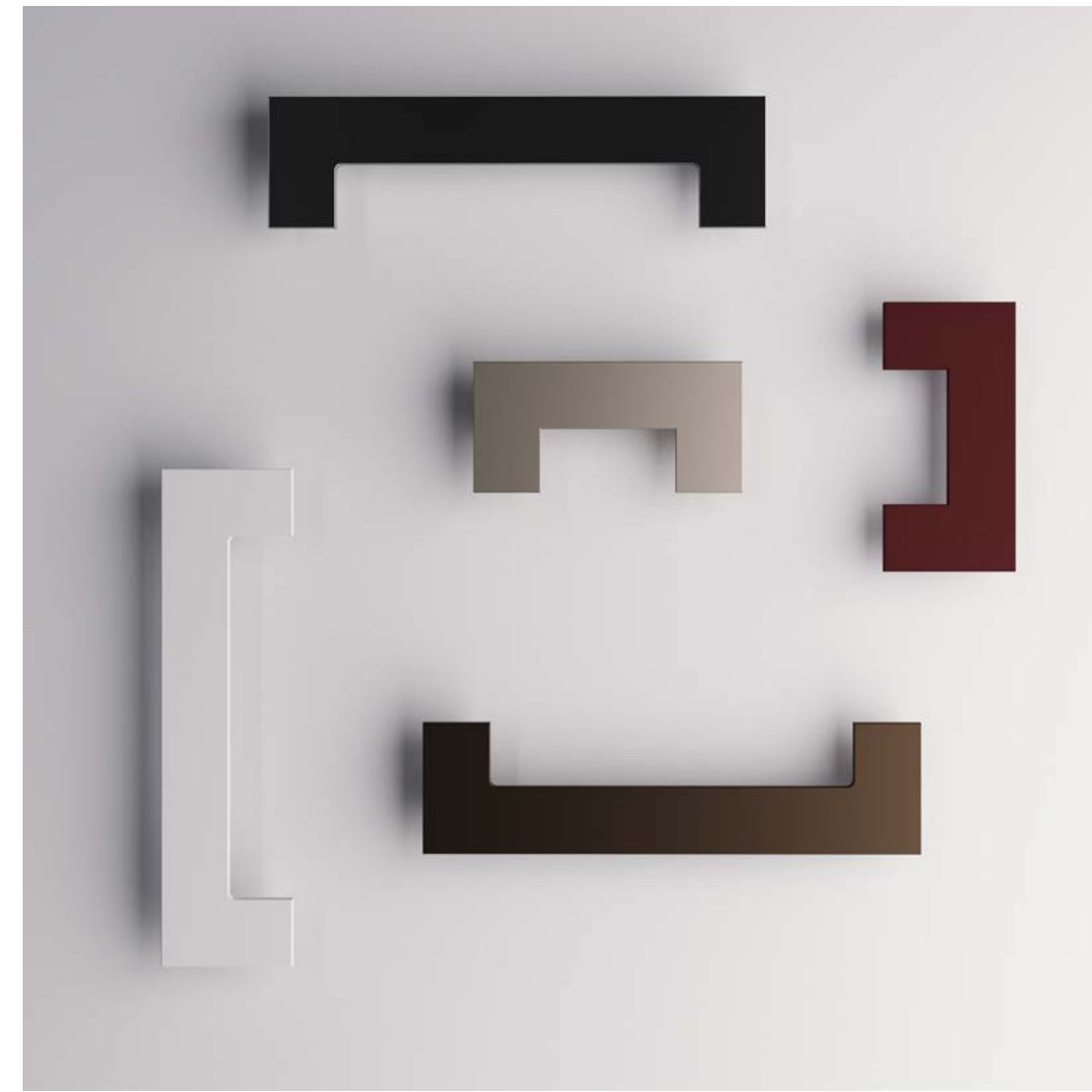
7021



7180 7181 DORDOGNE



7224 LOIRE



7232 MEUSE



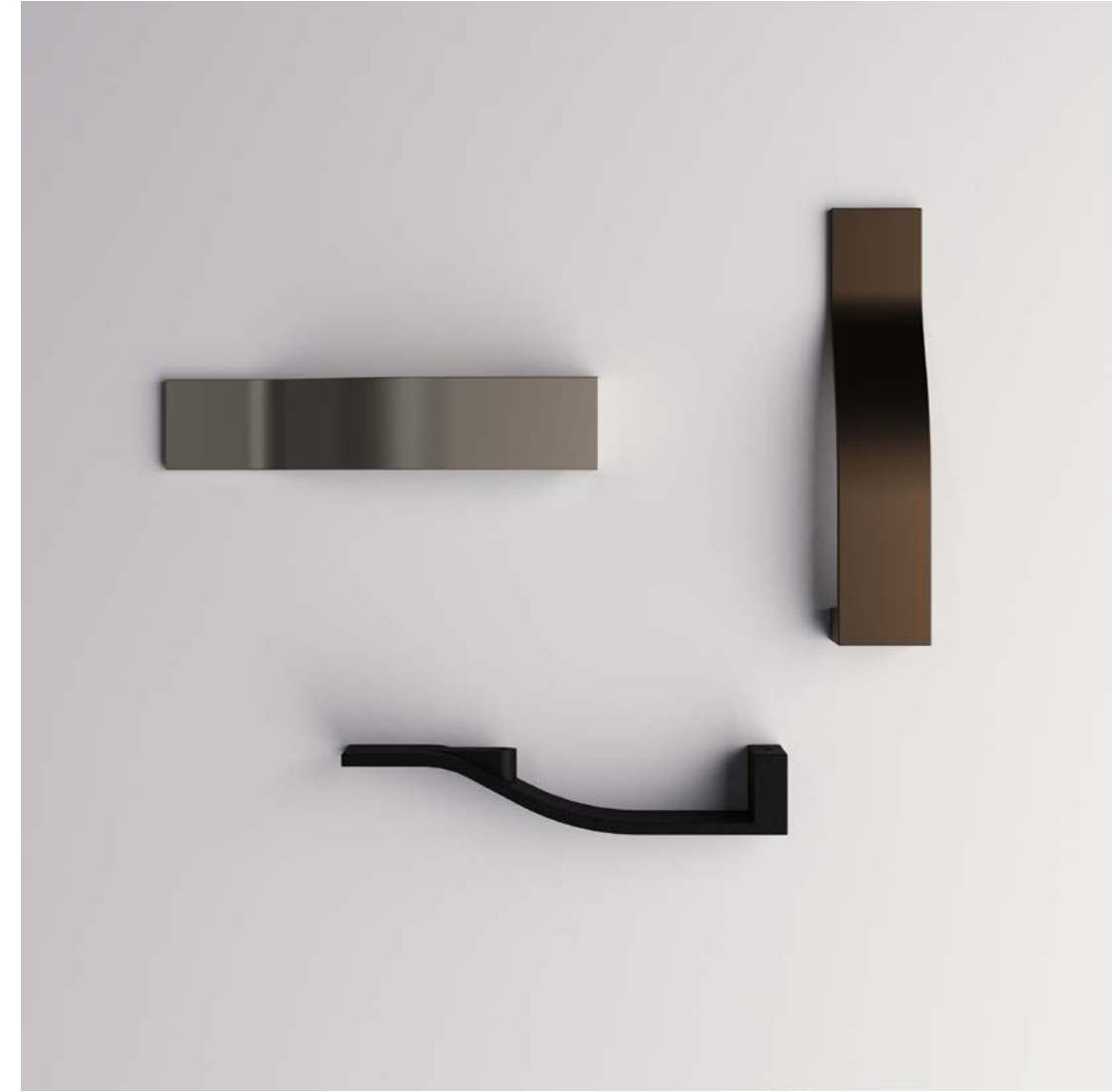
7254



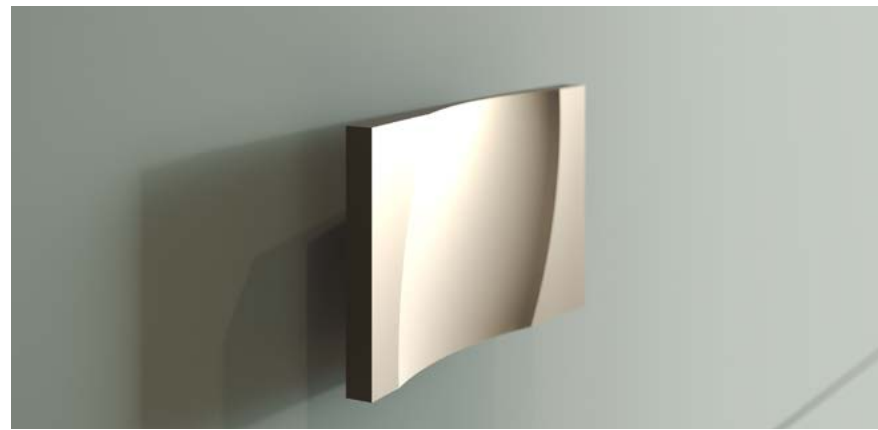
7269



7271



7276



7292



7298



7299



7319 REIHN



7321 ELBE

7323





7342



7371



7374 MIKE



7381 OVUM



7391



7394 SNICE

200

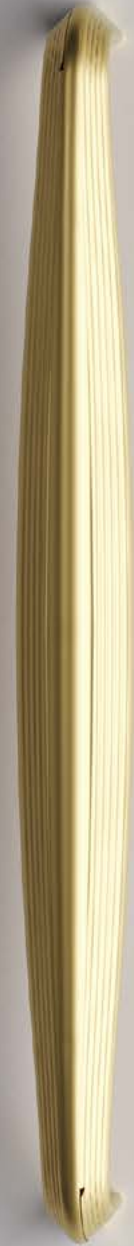


7445

201



202



203



7429 ELUNO



1047 ELUNO



7742

206



207



7440 GEN

208



7450 MOLETO

209



210



211



7467 ZINO

212



7468 OVAL

213



214



215

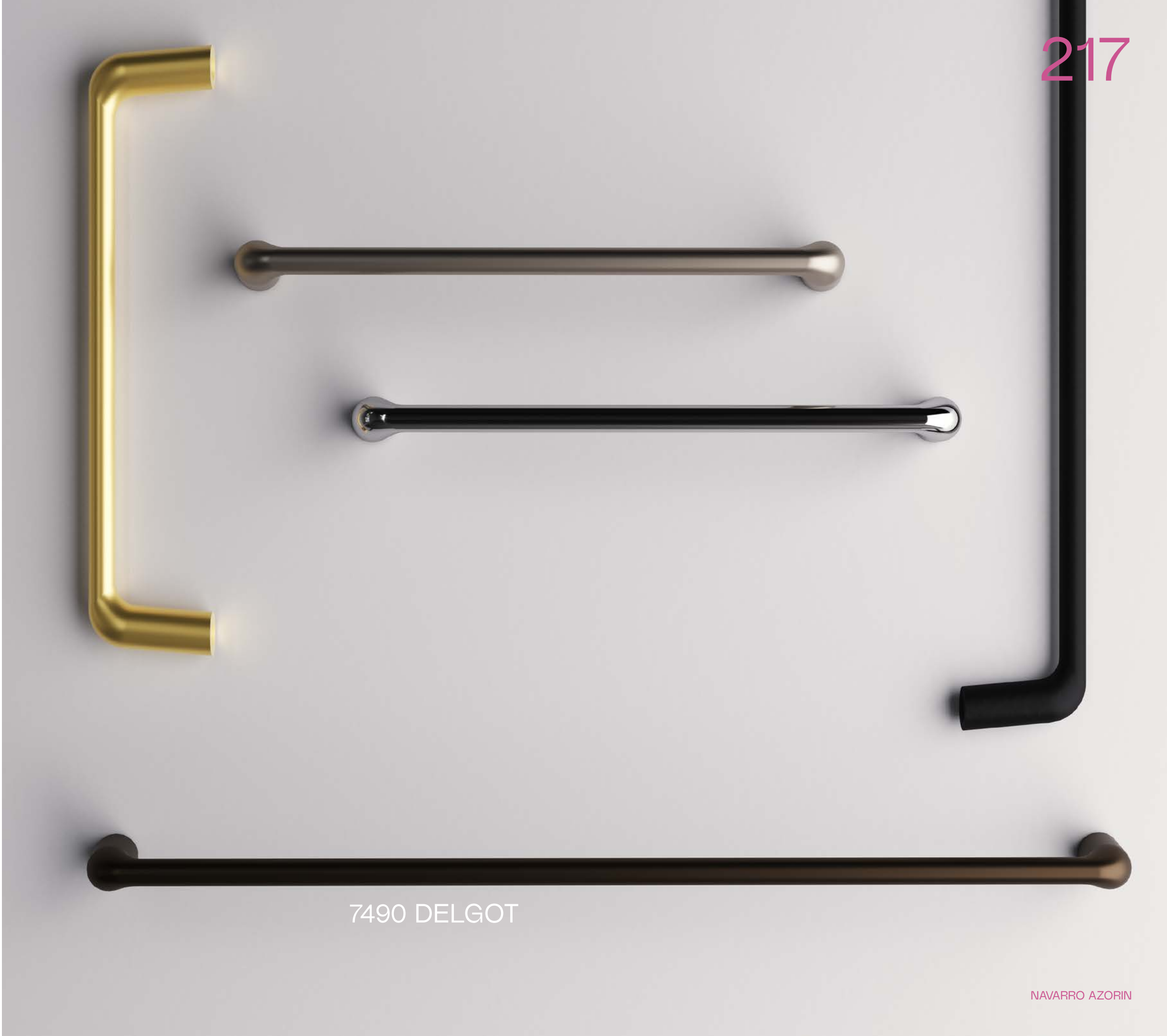


7469 OBLONG

216



217



7490 DELGOT

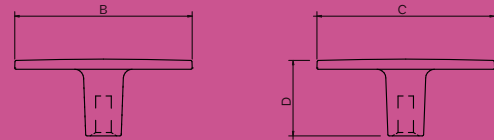
1047 ELUNO

Ref.	A	B	C	D
1047.0050	-	50	32	32



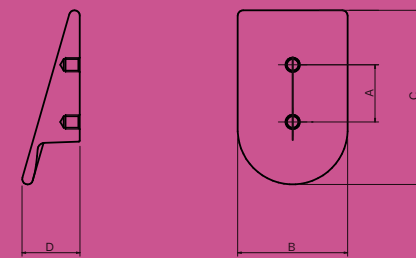
1048 BOTONE

Ref.	A	B	C	D
1048.0040	-	40	40	17



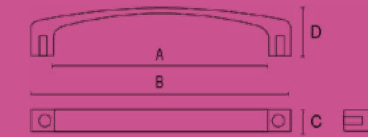
1049 TAÑA

Ref.	A	B	C	D
1049.0049	16	31	49	16



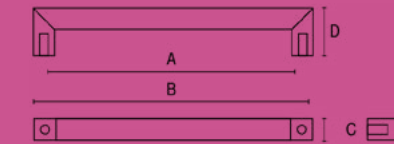
7001

Ref.	A	B	C	D
7001.0032	32	44	10	15
7001.0064	64	76	10	17
7001.0096	96	100	10	19
7001.0160	160	170	10	21



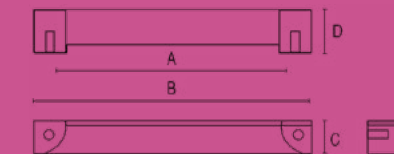
7003 RHONE

Ref.	A	B	C	D
7003.0096	96	103	10	21
7003.0128	128	135	10	21



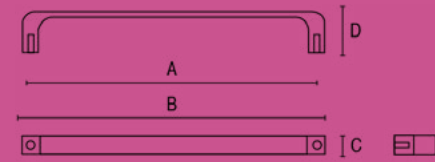
7004

Ref.	A	B	C	D
7004.0064	64	76	12	17
7004.0096	96	108	12	17
7004.0128	128	140	12	17



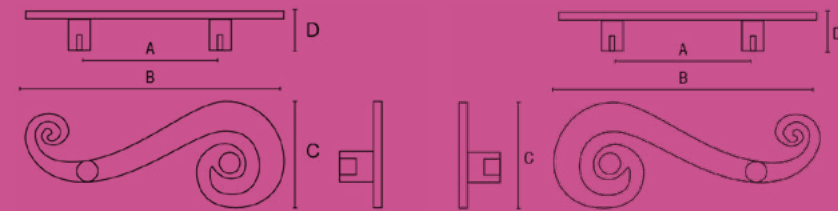
7021

Ref.	A	B	C	D
7021.0032	32	50	12	30
7021.0160	160	172	12	30
7021.0192	192	204	12	30



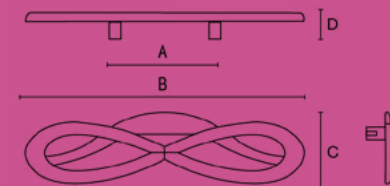
7180 7181 DORDOGNE

Ref.	A	B	C	D
7180.0064	64	116	47	
7181.0064	64	116	47	



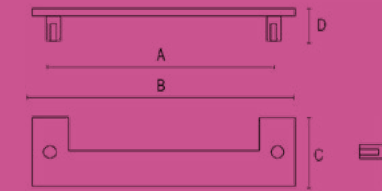
7224 LOIRE

Ref.	A	B	C	D
7224.0064	64	180	47	20
7224.0096	96	105	37	19
7224.0128	128	140	41	18



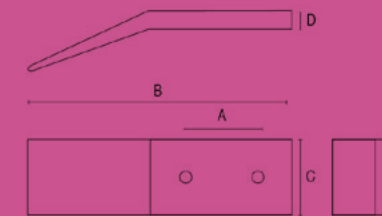
7232

Ref.	A	B	C	D
7232.0064	64	80	39	19
7232.0128	128	148	39	19



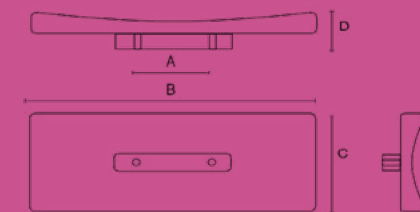
7254

Ref.	A	B	C	D
7254.0032	32	18	80	18



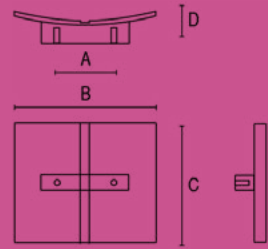
7269

Ref.	A	B	C	D
7269.0032	32	125	50	18



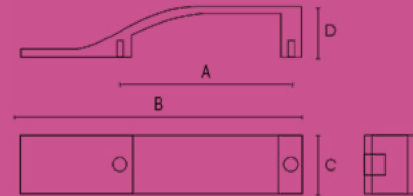
7271

Ref.	A	B	C	D
7271.0032	32	80	68	17



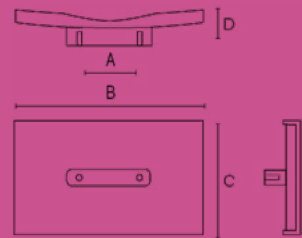
7276

Ref.	A	B	C	D
7276.0064	64	105	22	19



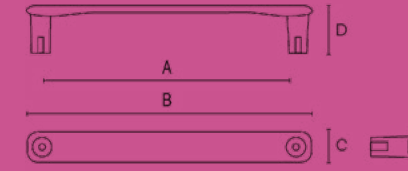
7292

Ref.	A	B	C	D
7292.0032	32	100	60	19



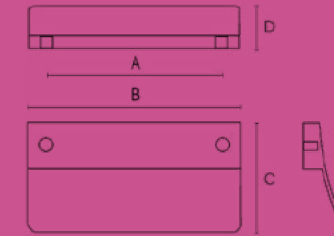
7298

Ref.	A	B	C	D
7298.0128	128	142	14	23
7298.0192	192	207	14	23



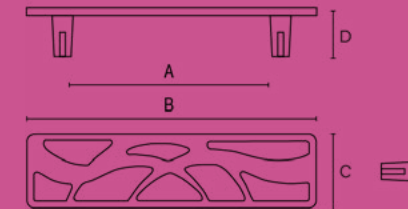
7299

Ref.	A	B	C	D
7299.0064	64	78	40	16



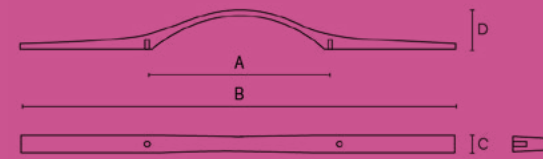
7319 REIHN

Ref.	A	B	C	D
7319.0096	96	125	32	20
7319.0128	128	200	32	20



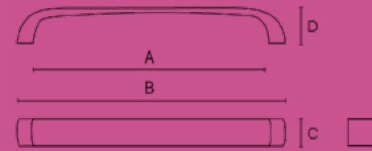
7321 ELBE

Ref.	A	B	C	D
7321.0200	64	200	12	24
7321.0300	128	300	12	26
7321.0400	160-288	400	12	27



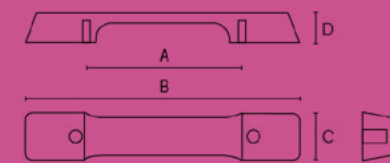
7323

Ref.	A	B	C	D
7323.0160	160	172	18	22



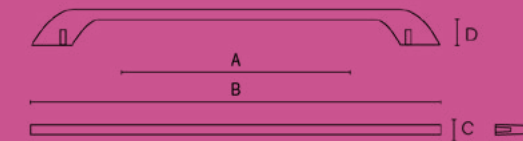
7342

Ref.	A	B	C	D
7342.0128	128	190	22	20



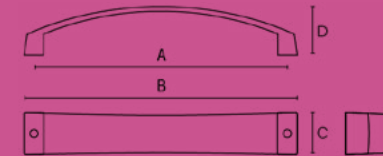
7371

Ref.	A	B	C	D
7371.0128	128	158	6	28
7371.0160	160	190	6	28
7371.0192	192	222	6	28
7371.0320	320	350	6	28



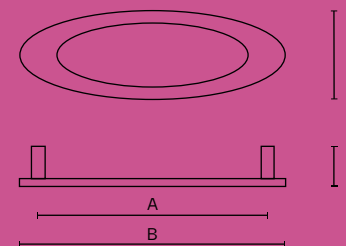
7374 MIKE

Ref.	A	B	C	D
7374.0128	128	137	22	25
7371.0192	192	205	21	24



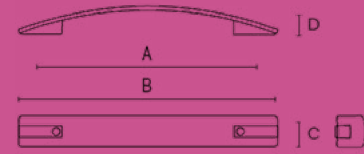
7381

Ref.	A	B	C	D
7381.0128	128	148	48	22



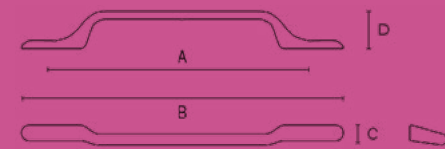
7391

Ref.	A	B	C	D
7391.0128	128	180	22	20
7391.0192	192	244	22	25



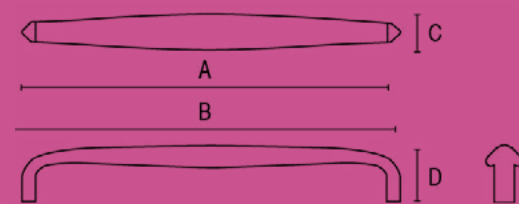
7394 SNICE

Ref.	A	B	C	D
7394.0160	160	236	8	28
7394.0224	224	300	8	28



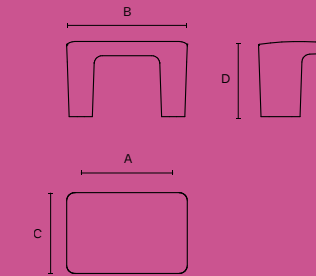
7429 ELUNO

Ref.	A	B	C	D
7429.0224	224	232	22	34



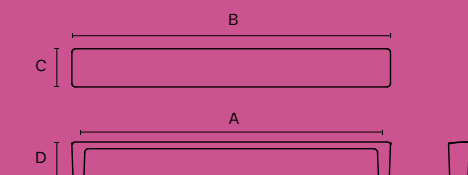
7440.0032 GEN

Ref.	A	B	C	D
7440.0032	32	42	28	26



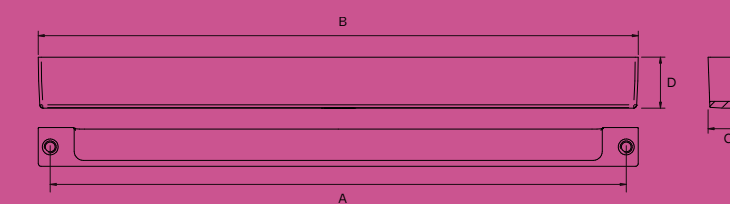
7440.0224 GEN

Ref.	A	B	C	D
7440.0224	224	234	28	26



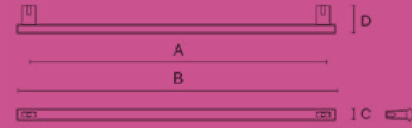
7445

Ref.	A	B	C	D
7445.0192	192	200	13	17



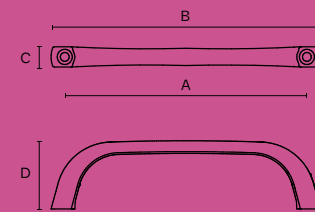
7450 MOLETO

Ref.	A	B	C	D
7450.0160	160	186	12	29
7450.0320	320	348	12	29



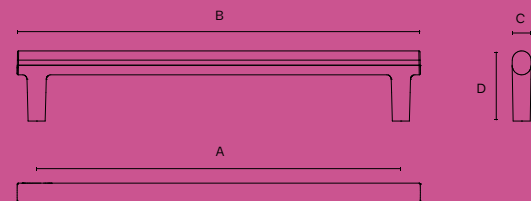
7467 ZINO

Ref.	A	B	C	D
7467.0160	160	171	8	27
7467.0224	224	236	8	27



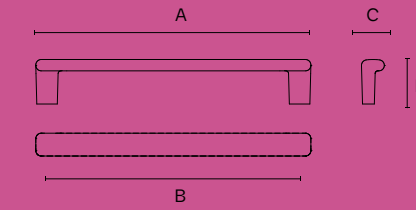
7468

Ref.	A	B	C	D
7468.0160	160	177	8	31
7468.0320	320	337	8	31



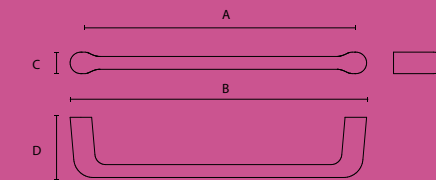
7469 OBLONG

Ref.	A	B	C	D
7469.0160	160	174	15	28
7469.0224	224	238	15	28



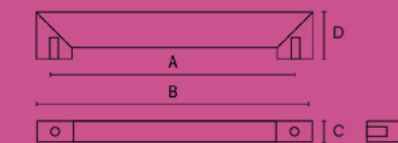
7490 DELGOT

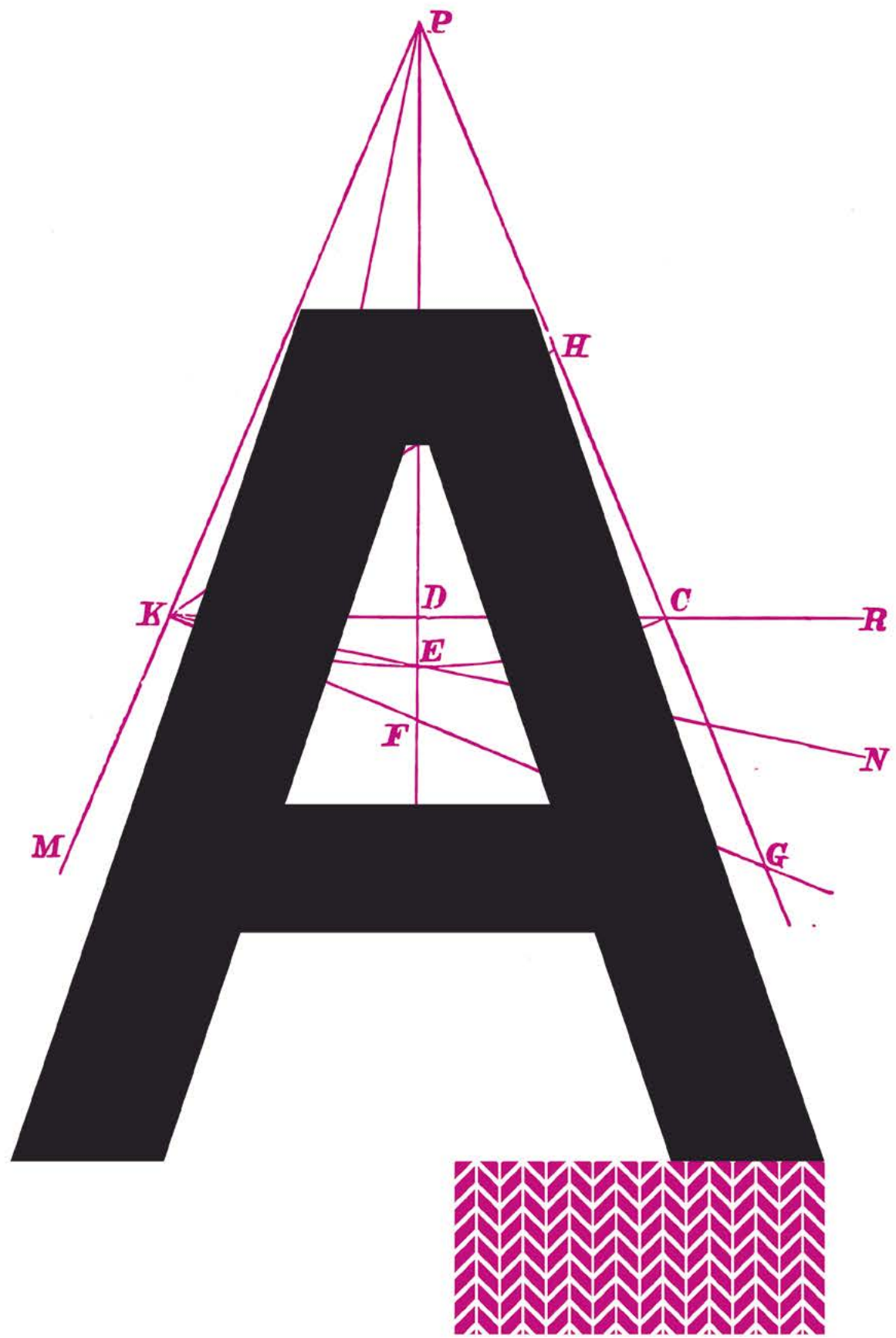
Ref.	A	B	C	D
7490.0128	128	138	10	28
7490.0224	224	234	10	28



7742

Ref.	A	B	C	D
7742.0064	64	77	8	18
7742.0096	96	109	8	18







7291

7236

234



7339

235



K720

236



237



7194

1046 CUP

238



1045

239



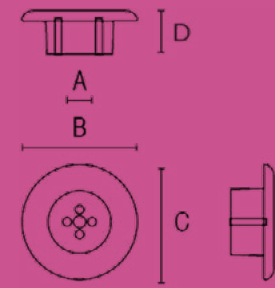
7408



3032 VALO

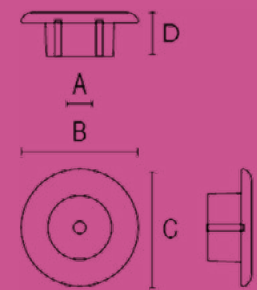
1045

Ref.	A	B	C	D
1045.007	32	70	70	27



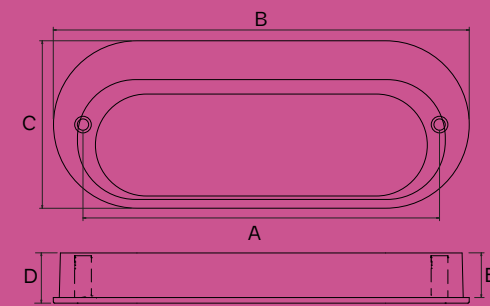
1046 CUP

Ref.	A	B	C	D
1046.007	32	70	70	27



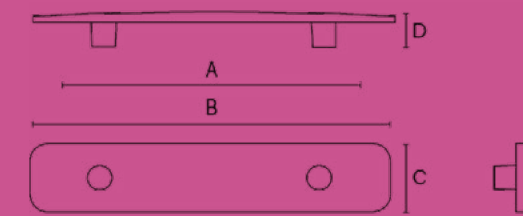
3032 VALO

Ref.	A	B	C	D	E
3032.0128	128	149	60	19	14



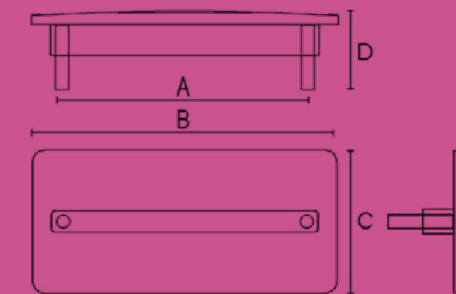
7194

Ref.	A	B	C	D
7194.0128	128	210	40	20



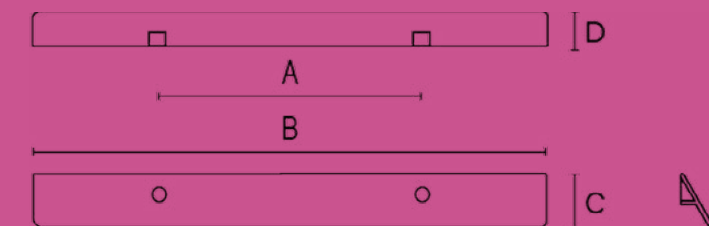
7236

Ref.	A	B	C	D
7236.0128	128	160	73	23



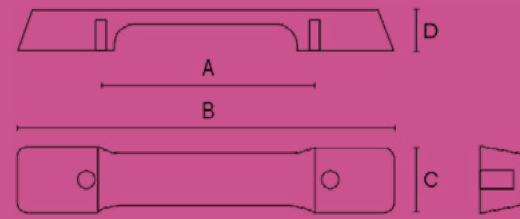
7291

Ref.	A	B	C	D
7291.0250	128	250	26	16



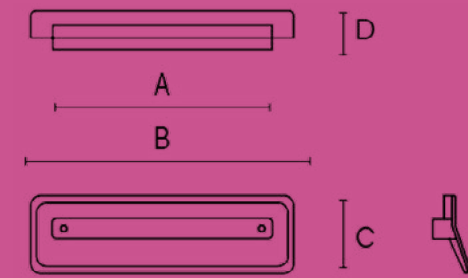
7339

Ref.	A	B	C	D
7339.0128	128	211	35	23



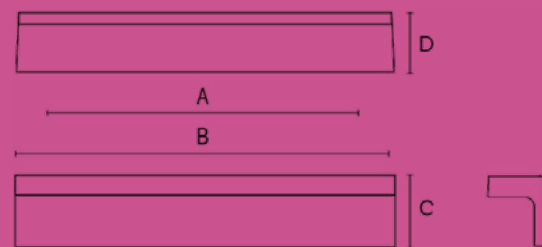
7408

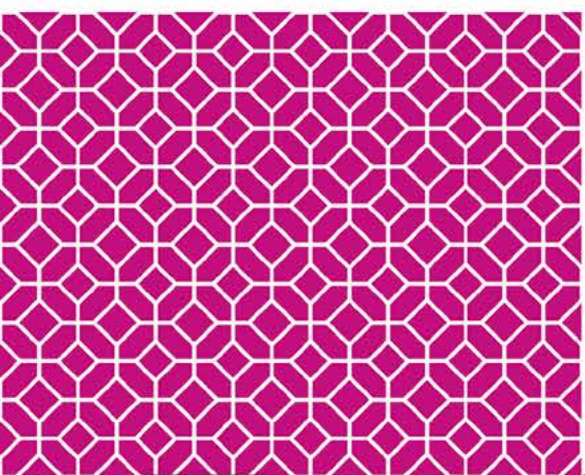
Ref.	A	B	C	D
7408.0128	128	170	50	15



K720

Ref.	A	B	C	D
K720.0130	32-96	130	30	20





KN



*Freezing point
of Mercury*

Freezing Point

Scale of Reaumur

Boiling water



BBS

*Well Sir
we give
our Sincerely*

*saloon.
Boggo
nals
11 of the
Jm*

*one con
Pioneer
R. E.
Attache
P.*





1037

1040



250



1038

251

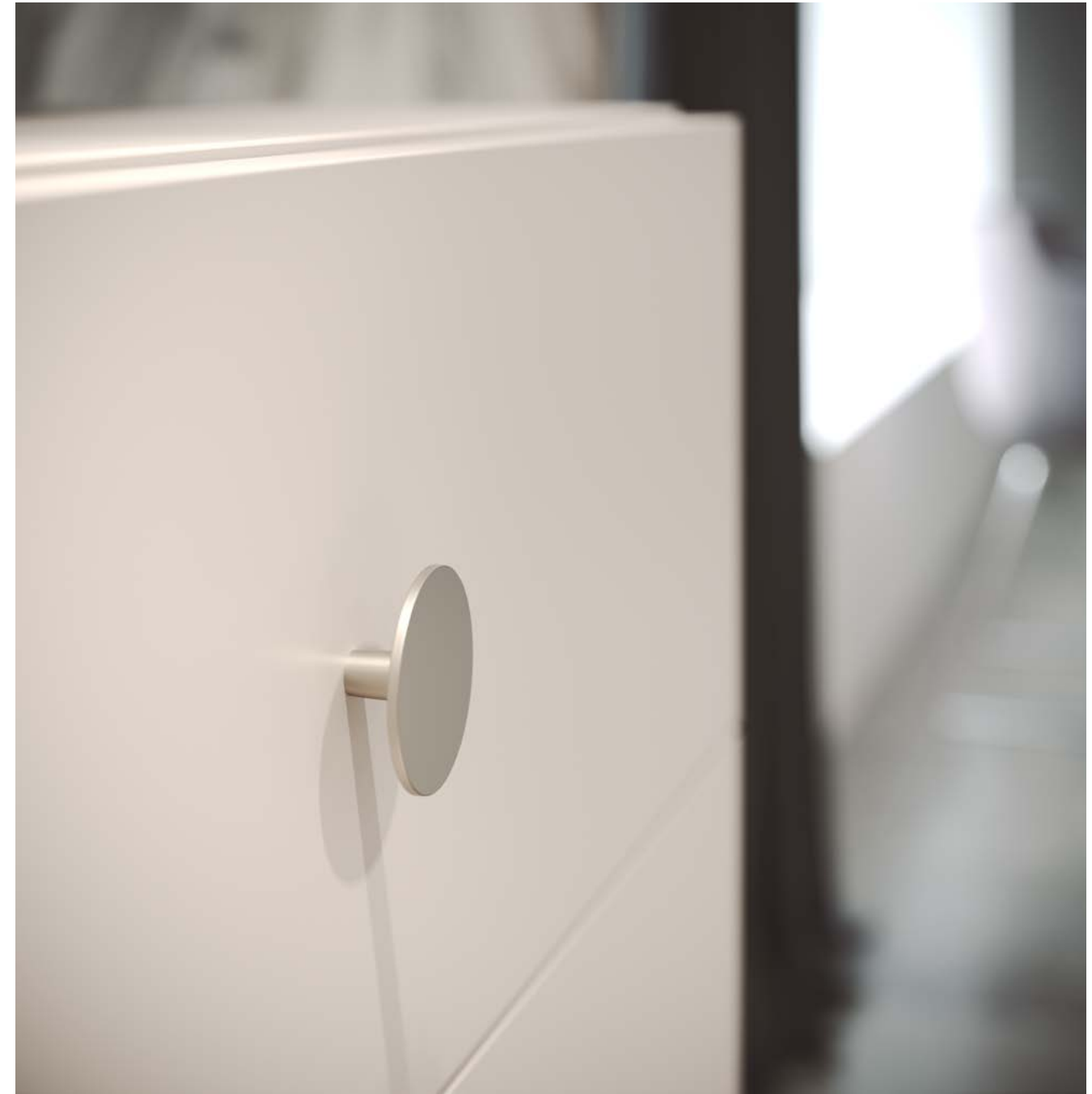


1041 DONAU

252



253



1048 BOTONE

254



255



1105

1043



256



257



1798



1003 CARRE

258



1049 TAÑA

259



260



261



1324

1031



262



263



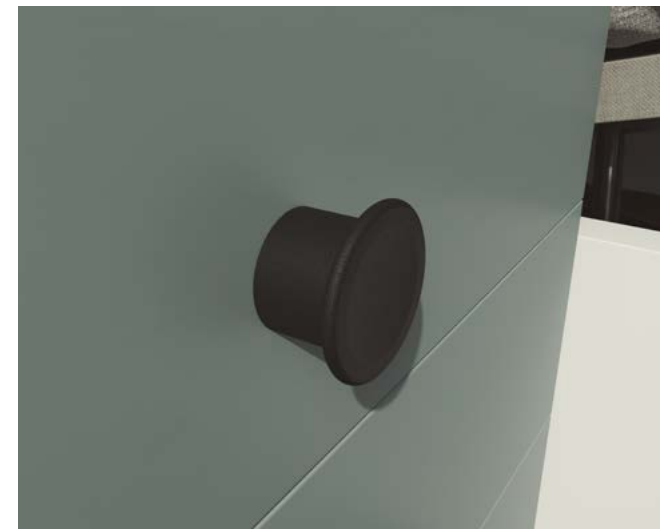
1047 ELUNO

264



1017 NASS

265



1023

266



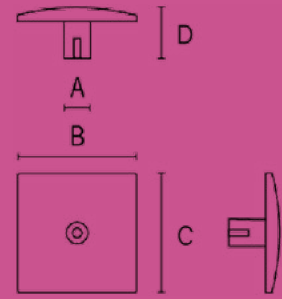
7440 GEN

267



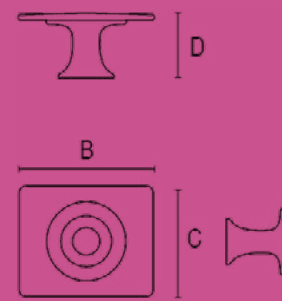
1003 CARRE

Ref.	A	B	C	D
1003.0025	-	25	25	16
1003.0040	-	40	40	17
1003.0050	16	50	50	18
1003.0060	16	60	60	20



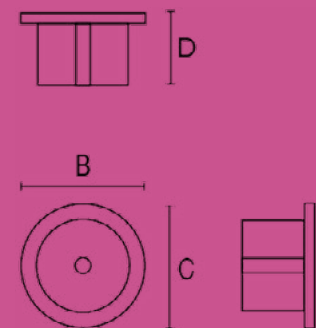
1017 NASS

Ref.	A	B	C	D
1017.0034	-	34	34	21



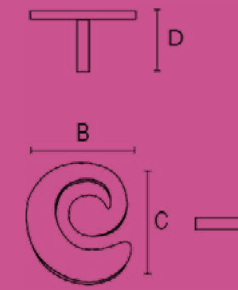
1023

Ref.	A	B	C	D
1023.0048	-	48	48	27



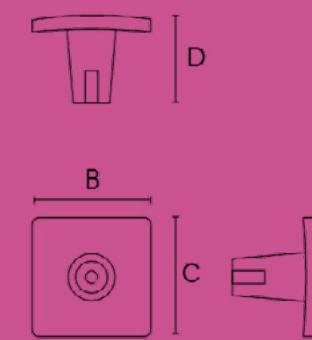
1031

Ref.	A	B	C	D
1031.0040	-	40	40	13



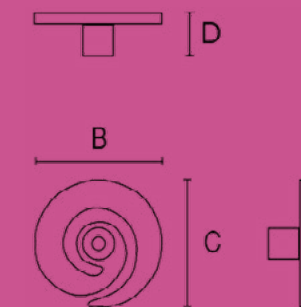
1037

Ref.	A	B	C	D
1037.0032	-	32	32	23



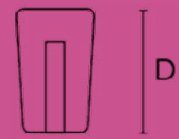
1038

Ref.	A	B	C	D
1038.0040	-	40	40	14



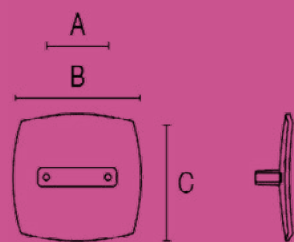
1040

Ref.	A	B	C	D
1040.0015	-	15	15	24



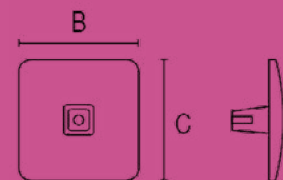
1041 DONAU

Ref.	A	B	C	D
1041.0067	32	67	67	20



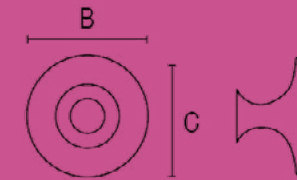
1043

Ref.	A	B	C	D
1043.0047	-	47	47	17



1105

Ref.	A	B	C	D
1105.0030	-	30	30	20



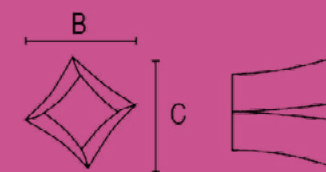
1324

Ref.	A	B	C	D
1324.0025	-	25	25	19
1324.0030	-	30	30	23



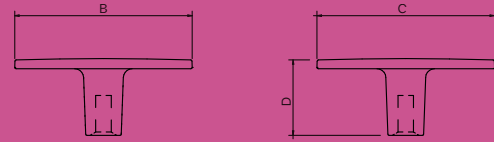
1798

Ref.	A	B	C	D
1798.0015	-	15	15	18



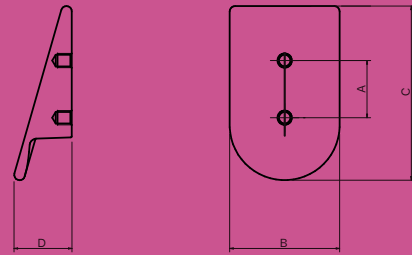
1048 BOTONE

Ref.	A	B	C	D
1048.0040	-	40	40	17



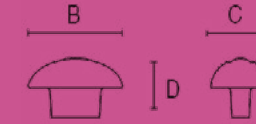
1049 TAÑA

Ref.	A	B	C	D
1049.0049	16	31	49	16



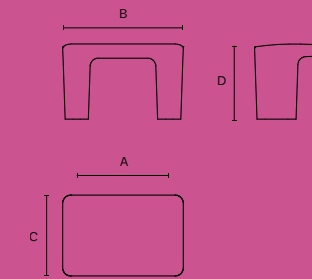
1047 ELUNO

Ref.	A	B	C	D
1047.0050	-	50	32	32



7440.0032 GEN

Ref.	A	B	C	D
7440.0032	32	42	28	26



ACCESORIES



ACCESORIOS / ACCESSORIES / ACCESSORIES

276



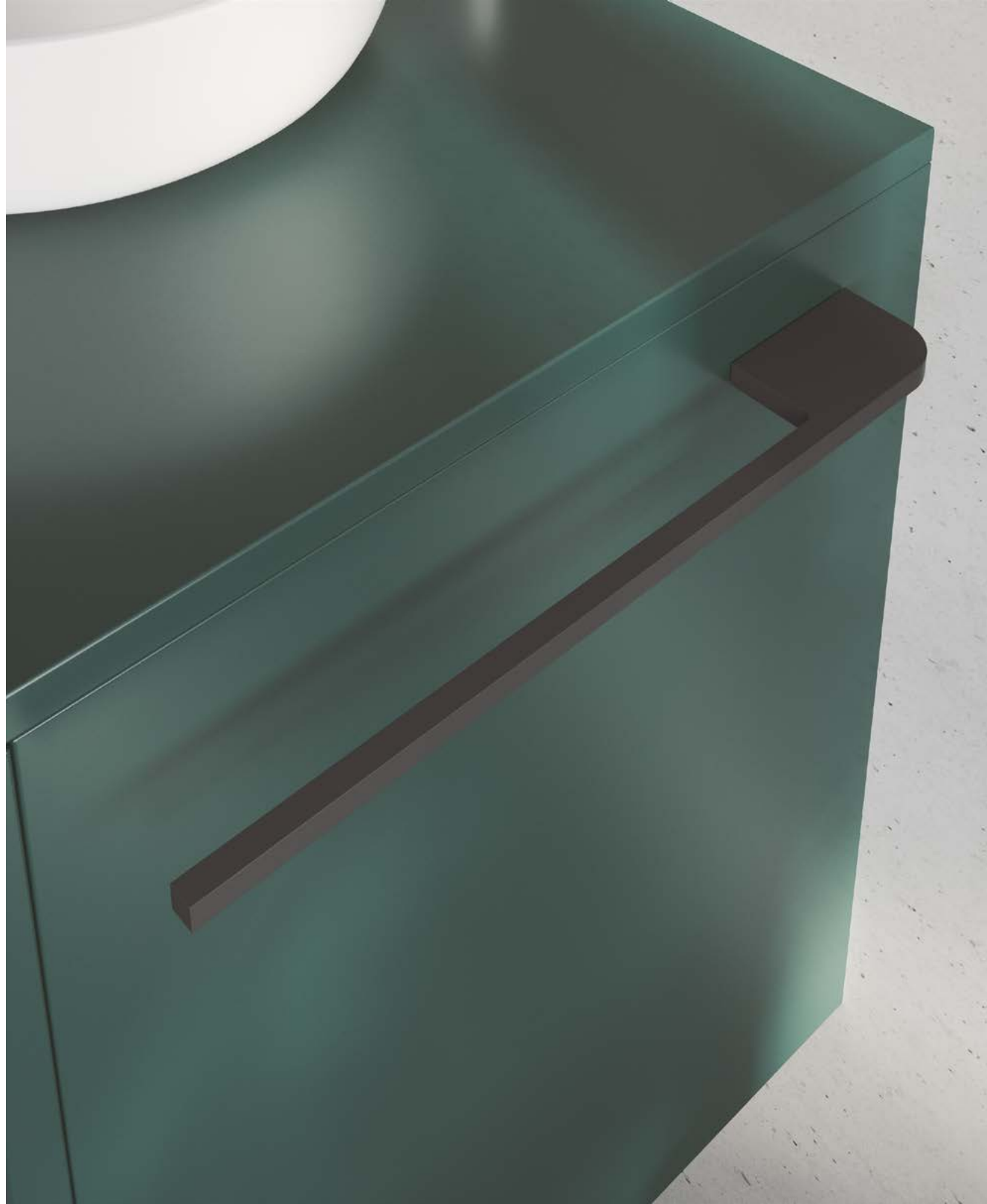
7345

277



7348

278



7492

279





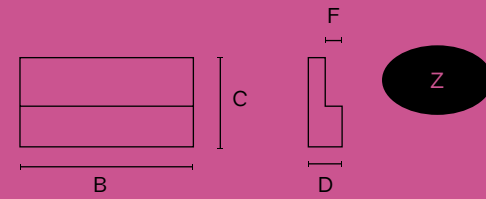
5080



4076 LAGO

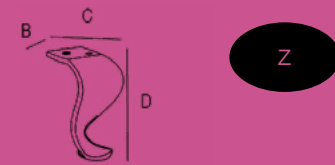
4076 LAGO

Ref.	A	B	C	D	F
4076.0020	-	20	30	8	6,5
4076.0040	-	40	30	8	6,5
4076.0050	-	50	30	8	6,5
4076.0100	-	100	30	8	6,5



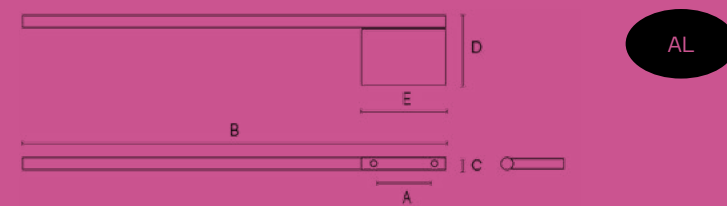
5080

Ref.	A	B	C	D
5080.0150	-	87	96	150



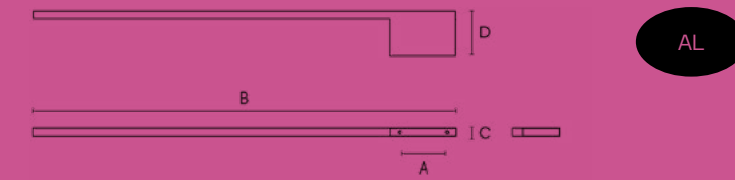
7345

Ref.	A	B	C	D
7345.0350	50	350	12	59
7345.0450	50	450	12	59



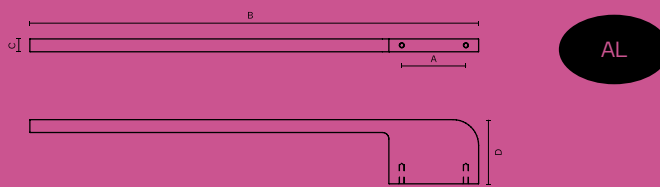
7348

Ref.	A	B	C	D
7348.0350	50	350	10	50
7348.0400	50	400	10	50
7348.0450	50	450	10	50
7348.0550	50	550	10	50



7492

Ref.	A	B	C	D
7492.350	50	350	10	50



REF.	PAG.	REF.	PAG.
1003	268	7031	84
1017	268	7170	164
1023	268	7171	52
1031	269	7180	220
1037	269	7191	53
1038	269	7192	53
1040	270	7193	164
1041	270	7194	243
1043	270	7212	164
1045	242	7215	84
1046	242	7224	22
1047	218	7229	53
1048	218	7232	221
1049	218	7234	131
1105	271	7235	165
1324	271	7236	243
1798	271	7240	53
3A56	128	7245	54
3013	128	7248	132
3020	128	7254	221
3021	128	7269	221
3022	129	7271	222
3023	129	7274	54
3026	129	7276	222
3027	129	7278	54
3028	130	7279	54
3029	130	7287	55
3030	130	7289	85
3031	131	7290	55
3032	131	7291	243
4076	282	7292	222
5080	282	7295	55
7B79	52	7297	132
7C10	52	7298	223
7E07	52	7299	223
7001	219	7308	85
7003	219	7316	165
7004	219	7319	223
7020	84	7321	224
7021	220	7323	224

REF.	PAG.	REF.	PAG.
7326	85	7412	170
7327	166	7419	134
7328	86	7420	57
7329	166	7423	171
7334	132	7426	171
7339	244	7429	226
7341	86	7433	134
7342	224	7434	134
7344	86	7435	135
7345	282	7440.0032	227
7348	283	7440.0224	227
7362	87	7441	57
7363	87	7442	135
7364	87	7443	90
7365	133	7445	227
7366	167	7450	228
7370	133	7451	57
7371.	225	7452	90
7374	225	7453	58
7375	88	7458	91
7376	55	7459	135
7381	225	7462	172
7382	88	7467	228
7384	89	7468	228
7388	56	7469	229
7389	167	7472	136
7390	168	7474	173
7391	226	7477	173
7392	56	7478	136
7393	168	7490	229
7394	226	7492	283
7399	133	7742	229
7400	89	7744	137
7401	90	7783	58
7402	169	7787	58
7403	56	8080	59
7404	56	K301	137
7408	244	K720	244
7409	169		
7411	170		

Camino de Sax, s/n Apdo. 73
30510 Yecla (Murcia), Spain

+34 968 751 425
+34 968 795 599

info@na-spain.com

na-spain.com

