
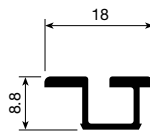


**1 JUNIOR-4**


Single track.

Finish	2m profiles	3m profiles	
Silver-anodised	721.220.102	721.230.101	60
Brass-anodised	721.220.780	721.230.786	
Black-anodised	721.220.894	721.230.893	
Gold-anodised	721.220.776	721.230.775	
White-lacquered RAL 9010	721.220.802	721.230.801	

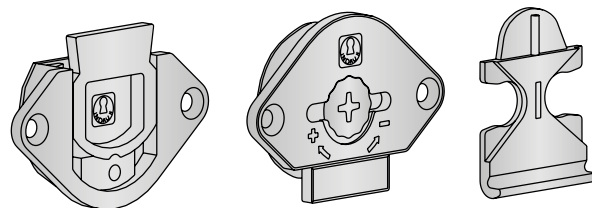


For other lengths, please consult.

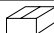
Set of fittings for 50 kp.

Brown RAL 8016	722.500.015		100
----------------	-------------	---	-----

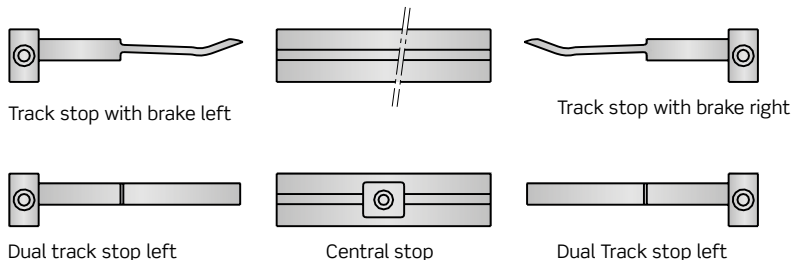
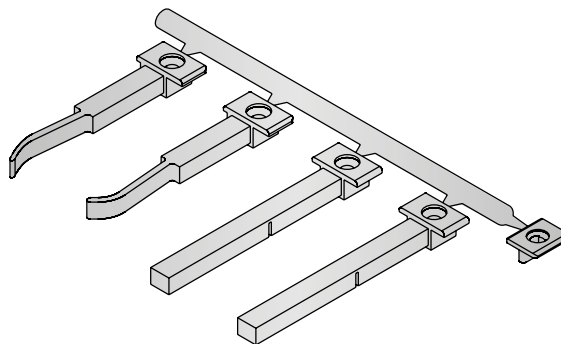
Lower roller with steel ball-bearing mounted wheel.  
2 sets for each door are needed.



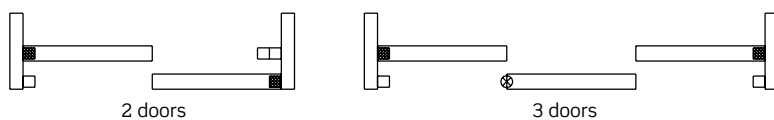
Accessories set.


White RAL 9003	716.307.001		50
Brown RAL 8016	716.307.012		
Black RAL 9005	716.307.023		
Oak RAL 1002	716.307.196		

Reference consists of 1 left-hand track stop with brake, 1 right-hand track stop with brake, 1 dual left-hand track stop, 1 dual right-hand track stop and 1 track stop.

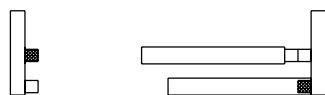


Assembly

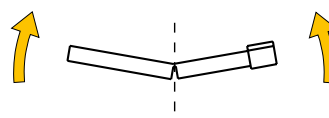


-  Track stop with brake
-  Track stop
-  Dual track stop
-  Central stop (optional)

The dual track stop allows the access to the pulling profile of the inner door



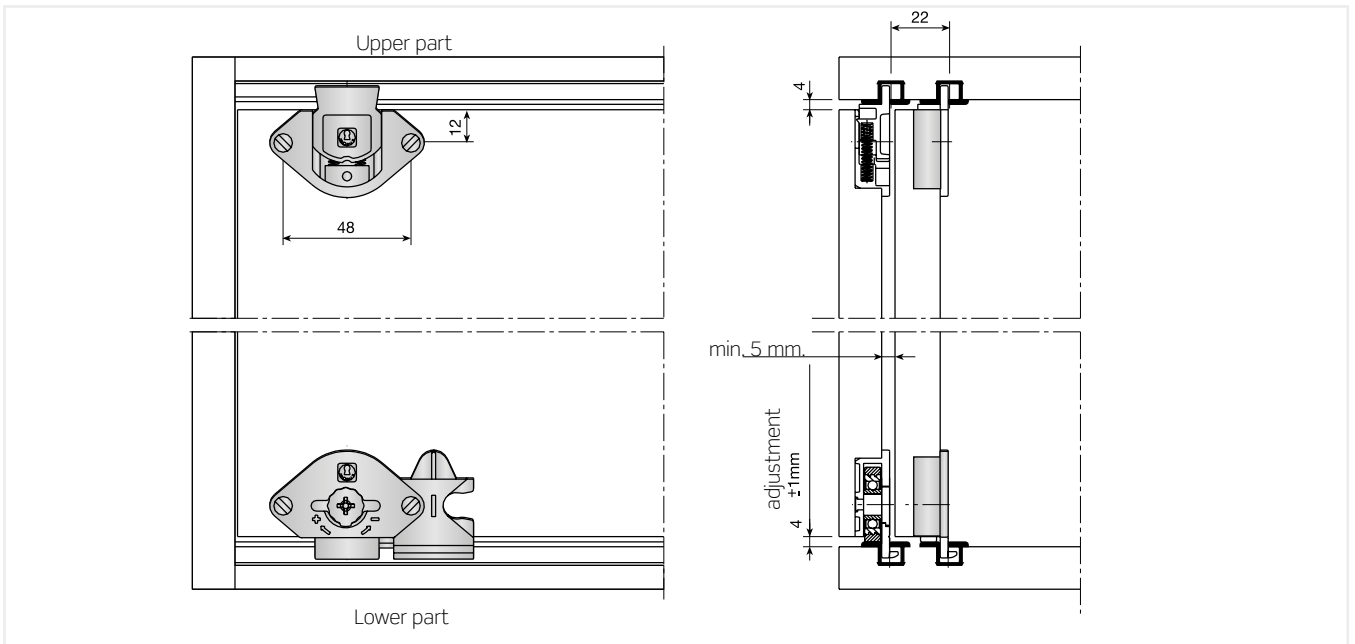
To get a single track stop, just break the dual track stop.



■ Technical data

Light and easy to fit. Lower roller with vertical adjustment. For doors up to 50 Kg.

Assembly



Drilling plan

