

SISTEMAS DE PORTAS DE ROUPEIRO

CASATREND

Perfis Puxador



Curvo



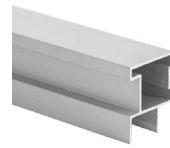
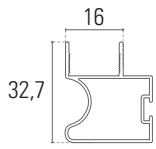
Acabamento

C (m)

Anodizado mate Branco brilho

5 PPC500.AM PPC500.BB

5,2 PPC520.AM PPC520.BB



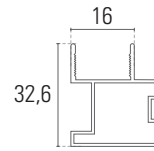
Recto 1794



Acabamento

C (m)

5 PPR1794.AM



Recto



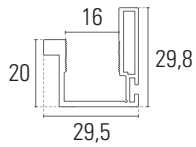
Acabamento

C (m)

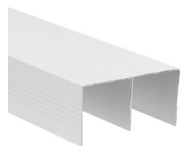
Anodizado mate Branco brilho

5 PPR500.AM PPR500.BB

5,2 PPR520.AM PPR520.BB



Calhas Superiores



CS

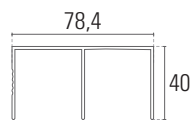


Acabamento

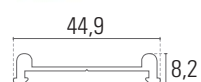
C (m)

Anodizado mate Branco brilho

5 CS.AM CS.BB



Calhas Inferiores

**Macho**

C (m)

Acabamento

Anodizado mate Branco brilho

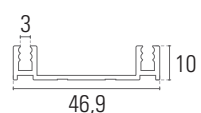
5 CIM.AM CIM.BB

**TF**

C (m)

Anodizado mate

5 CITF.AM

**Invertida**

C (m)

Acabamento

Anodizado mate Branco brilho

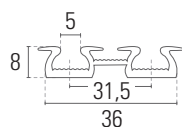
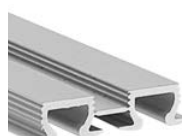
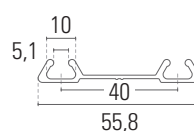
5 CII.AM CII.BB

**Invertida 6113**

C (m)

Anodizado mate

5 CII6113.AM

**TG**

C (m)

Anodizado mate

5 CITG.AM

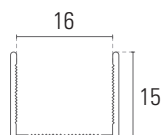
**TH**

C (m)

Anodizado mate

5 CITH.AM

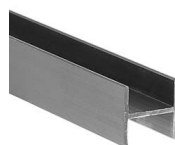
Perfis U e H

**U**

C (m)

Anodizado mate

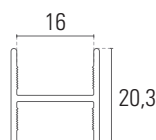
5 PU.AM

**H**

C (m)

Anodizado mate

5,2 PH.AM



Carros



Superior de Rolamento TR12

CSRTR12



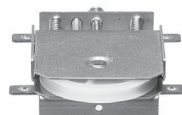
Superior T8 - N°8

CST8



Inferior Macho CRM

CRM



Inferior Fêmea CRF

CRF



Inferior Macho CRIBM

CRIBM



Inferior Fêmea CRIBF

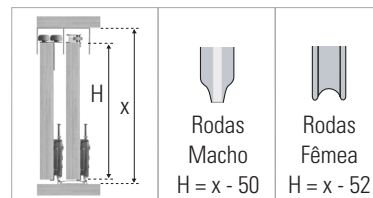
CRIBF

Outros Componentes



Amortecedor AR

Força	Emb. (uni)	Montagem	
		Esquerdo	Direito
20 kg	10	AR20E	AR20D
45 kg	10	AR45E	AR45D



Amortecedor Universal

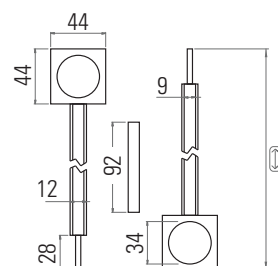
Vendido ao par.

ARUNIV



Esticador Portas de Roupeiro

EPR2M



Sistema B

Perfis Puxador

**B16-R10**

L (m)

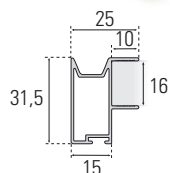


Emb. (uni)

Acabamento

Lacado
brancoAnodizado
mate

5,2	18	PPB16R10.B	PPB16R10.AM
-----	----	------------	-------------

**B16-C20**

L (m)

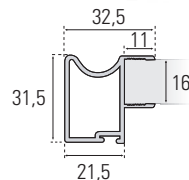


Emb. (uni)

Acabamento

Lacado
brancoAnodizado
mate

5,2	18	PPB16C20.B	PPB16C20.AM
-----	----	------------	-------------

**B18-R1**

Instalar com a calha inferior fêmea CIB-3F.



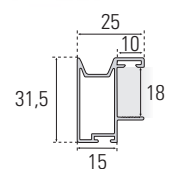
L (m)



Emb. (uni)

Anodizado
mate

5,2	18	PPB18R1.AM
-----	----	------------

**B19-C1**

Instalar com a calha inferior fêmea CIB-3F.



L (m)

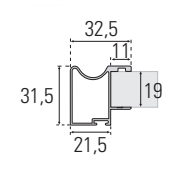


Emb. (uni)

Acabamento

Lacado
brancoAnodizado
mate

5,2	18	PPB19C1.B	PPB19C1.AM
-----	----	-----------	------------

**B19-R2**

Instalar com a calha inferior fêmea CIB-3F.



L (m)

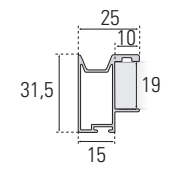


Emb. (uni)

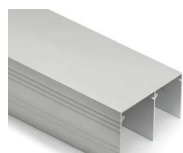
Acabamento

Lacado
brancoAnodizado
mate

5,2	18	PPB19R2.B	PPB19R2.AM
-----	----	-----------	------------



Calhas Superiores

**CSB**

Cortado à medida pretendida.



L (m)

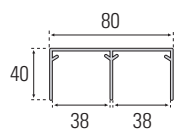


Emb. (uni)

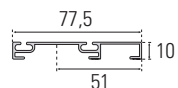
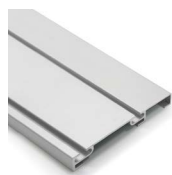
Acabamento

Lacado
brancoAnodizado
mate

6	6	CSB.B	CSB.AM
---	---	-------	--------



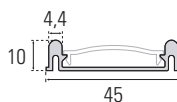
Calhas Inferiores



Fêmea CIB-1F

Cortado à medida pretendida.

L (m)	Emb. (uni)	Acabamento	
		Lacado branco	Anodizado mate
6	24	CIB1F.B	CIB1F.AM



Macho CIB-2M

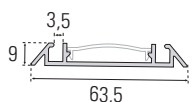
Cortado à medida pretendida.

L (m)	Emb. (uni)	Acabamento	
		Lacado branco	Anodizado mate
6	24	CIB2M.B	CIB2M.AM



Fixador Plástico para CIB-1F

CIB1F.FP



Fêmea CIB-3F

Cortado à medida pretendida.

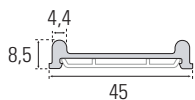
L (m)	Emb. (uni)	Acabamento	
		Lacado branco	Anodizado mate
6	24	CIB3F.B	CIB3F.AM



Tampa B2MB3F

Para a calha inferior macho B2M e fêmea B3F. Cortado à medida pretendida.

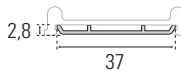
L (m)	Emb. (uni)	Acabamento	
		Lacado branco	Anodizado mate
6	24	TAB2MB3F.B	TAB2MB3F.AM



Macho CIB-4M

Cortado à medida pretendida.

L (m)	Emb. (uni)	Acabamento	
		Lacado branco	Anodizado mate
6	24	CIB4M.B	CIB4M.AM



Perfil de Fixação para Calha Inferior CIB-4M

Cortado à medida pretendida.

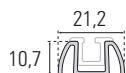
L (m)	Emb. (uni)	Acabamento
		Natural
5,2	18	PFCIB4M



Encastre Fêmea CIB-5F

Cortado à medida pretendida.

L (m)	Emb. (uni)	Acabamento	
		Lacado branco	Anodizado mate
6	36	CIB5F.B	CIB5F.AM



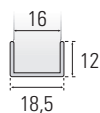
Perfil de Fixação Exterior para Calha CIB-5F

Cortado à medida pretendida.

L (m)	Emb. (uni)	Acabamento	
		Lacado branco	Anodizado mate
6	36	PFCIB5F.B	PFCIB5F.AM

Sistema B

Perfis U e H

**U B16-U**

Cortado à medida pretendida.



L (m)



Emb. (uni)

Acabamento

Lacado

branco

Anodizado

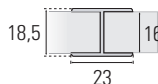
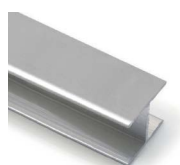
mate

6

24

PB16U.B

PB16U.AM

**H B16-H23**

Cortado à medida pretendida.



L (m)



Emb. (uni)

Acabamento

Lacado

branco

Anodizado

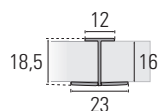
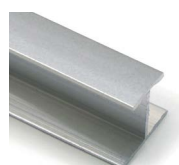
mate

6

24

PB16H23.B

PB16H23.AM

**H B16-H12**

Cortado à medida pretendida.



L (m)



Emb. (uni)

Acabamento

Lacado

branco

Anodizado

mate

6

24

PB16H12.B

PB16H12.AM

**U B-18U / B-19U**

Cortado à medida pretendida.



L (m)



Emb. (uni)

Acabamento

Lacado

branco

Anodizado

mate

18U

6

36

-

PB18U.AM

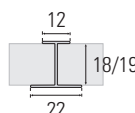
19U

6

36

PB19U.B

PB19U.AM

**H B-18H / H-19H**

Cortado à medida pretendida.



L (m)



Emb. (uni)

Acabamento

Lacado

branco

Anodizado

mate

18H

6

36

-

PB18H.AM

19H

6

36

PB19H.B

PB19H.AM

Carros Superiores

**CRSB**

Instalar com os perfis puxador de 16 mm B16-10 e B16-C20.



Emb. (uni)

Código

100

CRSB

**CRSB19**

Instalar com os perfis puxador de 18 mm e 19 mm.



Emb. (uni)

Código

100

CRSB19

Carros Inferiores



Macho CRIBM



Emb.
(uni)

Código

100 CRIBM



Fêmea CRIBF



Emb.
(uni)

Código

100 CRIBF

Outros Componentes



Amortecedor AR

Força



Emb.
(uni)

Montagem

Esquerdo

Direito

20 kg

10

AR20E

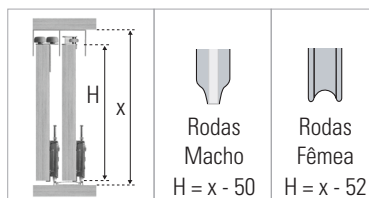
AR20D

45 kg

10

AR45E

AR45D



Rodas
Macho

$H = x - 50$



Rodas
Fêmea

$H = x - 52$



Posicionador Inferior PIBM

Para aplicar na calha inferior.



Emb.
(uni)

Código

100

PIBM



Posicionador Superior PSBM

Para aplicar em qualquer modelo de calha superior.



Emb.
(uni)

Código

100

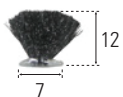
CRIBF



Rolo de Pelúcia

Em cinza.

P127C



Perfil de Borracha Redutor

Para vidros de 4 mm.
Rolo de 75 m.

Para madeira de Código

16 mm PBR164

19 mm PBR194



Esquadro para União



Emb.
(uni)

Código

100

ESQROUP