

SYSKOR



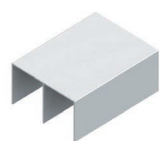
SISTEMAS DE PORTAS DE ROUPEIRO
CASATREND | SYSKOR



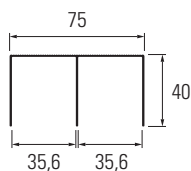
BASE FLOOR

Portas de correr simétricas, com roda oculta.
Painel de 10 mm.
Vidro de 3/4/5 ou 6 mm.

Calhas Superiores



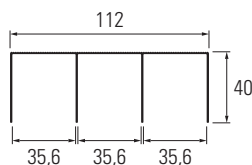
CAA75



L (m)	Emb. (uni)	Acabamento	
		Lacado branco	Anodizado mate
4	8	110400A01	110400A02



CA3G-S75

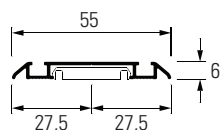


L (m)	Emb. (uni)	Anodizado mate
6	8	108600A02

Calhas Inferiores



CBD55



L (m)	Emb. (uni)	Acabamento	
		Lacado branco	Anodizado mate
4	6	11A400A01	11A400A02



Travão de Metal para Calha Inferior

Para as calhas inferior "K" e "E1".

 Aço inox

804FRE000

Perfis Puxador



TR-BASE25

L (m)	Emb. (uni)	Acabamento	
		Lacado branco	Anodizado mate
2,6	16	17A260A01	17A260A02
2,9	16	17A290A01	17A290A02



TR-BASE-S3

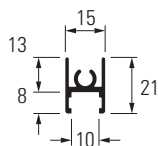
L (m)	Emb. (uni)	Acabamento	
		Lacado branco	Anodizado mate
2,6	16	17D260A01	17D260A02
2,9	16	17D290A01	17D290A02

Perfis



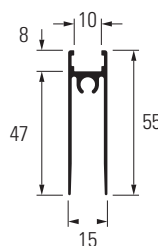
Perfil Superior RS-BASE

L (m)	Emb. (uni)	Acabamento	
		Lacado branco	Anodizado mate
4	8	174400A01	174400A02



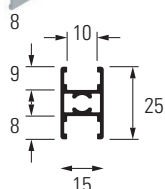
Perfil Inferior RI-BASE

L (m)	Emb. (uni)	Acabamento	
		Lacado branco	Anodizado mate
4	8	173400A01	173400A02



Perfil Central RC-BASE "H" Horizontal

L (m)	Emb. (uni)	Acabamento	
		Lacado branco	Anodizado mate
4	8	175400A01	175400A02



Outros Componentes



Carro Superior Base

Rolamento com roda de borracha.



Emb.
(uni)

100



Galvanizado

170RODS75



Carro Inferior Base



Emb.
(uni)

100



Galvanizado

170RIND40



Parafuso M6x30



Emb.
(uni)

100



Galvanizado

170000001



Perfil PVC Lateral Base

Rolo de 50 metros.



PVC cinza

170003001



Perfil para Vidro 3/4/5/6 mm

Perfil PVC rígido transparente.

Perfil de 3 metros.



Emb.
(uni)

20



Galvanizado

170005001



Fixador



Emb.
(uni)

50



Plástico

800000016

Kits de Amortecedores



Kit 2 Rodas Altas

Composto por:

- 2 rodas superiores de fecho amortizado.
- 2 ativadores.
- Parafusos.



Emb.
(uni)

20



Cap. (kg)

15 - 40

Código

170B75ES2

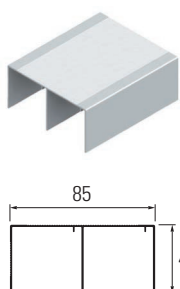




TERRA S85

Para portas de 19 mm.

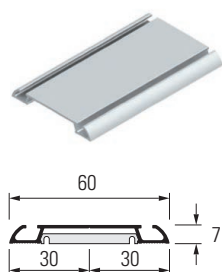
Calhas Superiores



CAA85

L (m)	Emb. (uni)	Acabamento	
		Lacado branco	Anodizado mate
4	8	510400A01	510400A02

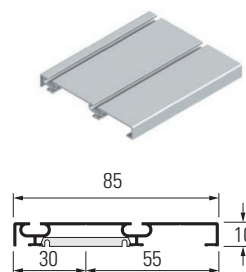
Calhas Inferiores



CBD60

Montagem clip.

L (m)	Emb. (uni)	Acabamento	
		Lacado branco	Anodizado mate
4	8	511400A01	511400A02



CBD85-10

Montagem clip.

L (m)	Emb. (uni)	Acabamento	
		Lacado branco	Anodizado mate
4	8	513400A01	513400A02



Fixador

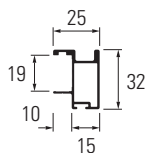
Saco de 50 unid.
Caixa de 1000 unid.



Plástico

104ANC000

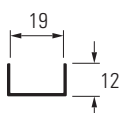
Perfis Puxador



TR19-S85

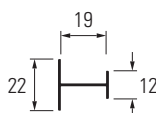
L (m)	Emb. (uni)	Acabamento	
		Lacado branco	Anodizado mate
2,6	20	560260A01	560260A02
2,9	20	560290A01	560290A02

Perfis



"U" 19 mm PRU19-S85

L (m)	Emb. (uni)	Acabamento	
		Lacado branco	Anodizado mate
4	10	520400A01	520400A02



"H" 19 mm PRH19-S85

L (m)	Emb. (uni)	Acabamento	
		Lacado branco	Anodizado mate
4	10	521400A01	521400A02

Outros Componentes



Carro Superior S85 Rolamento

Embalagens de 25 e de 200 unidades.



Zincado

102RODS85



Carro Superior S85 Roldana

Embalagens de 25 e de 200 unidades.



Zincado

102ROLS85



Carro Antidescarrilamento



Emb. (uni)

100



Zincado

802ANV000



Carro Inferior Macho S85

Roda de Ø 60 mm.



Emb. (uni)

50

Acabamento

Zincado

Zincado preto

101D60001

101D60002

Kits de Amortecedores



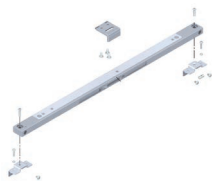
T-15 / T-40

Emb. (uni)	Cap. (kg)	Código
25	15	804RETACK015
25	40	804RETACK040



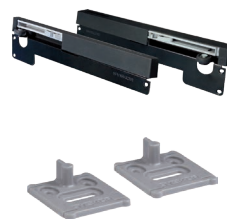
T-60 / T-80

Emb. (uni)	Cap. (kg)	Código
25	60	804RETACK060
25	80	804RETACK080



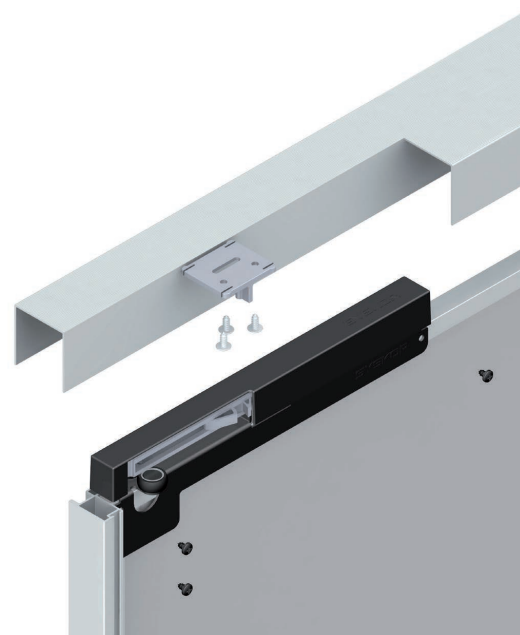
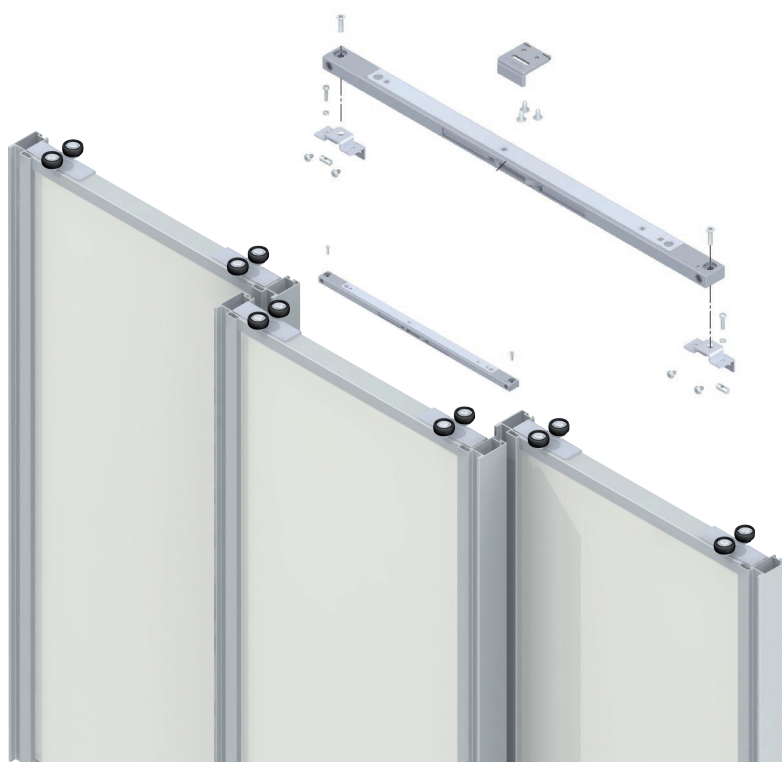
Kit Amortecedor Central

Emb. (uni)	Cap. (kg)	Código
25	40	804RETCEN



Kit Easy Soft

Emb. (uni)	Cap. (kg)	Código
20	<= 15	104S85ES1
20	15 - 25	104S85ES2
20	25 - 40	104S85ES3



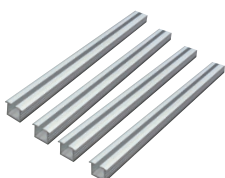


TERRA W40

Soft-close integrado nas calhas superiores.

Características da porta:

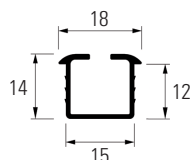
- Peso máx.: 40 kg
- Espessura: 19-40 mm.
- Largura máx.: 1000 mm.
- Altura máx.: 2400 mm.



Kit Calhas 2 Portas

Kit inclui 4 calhas de 4 metros cada.
Calhas de embutir.
A mesma calha aplica-se para superior e inferior.

300W40400

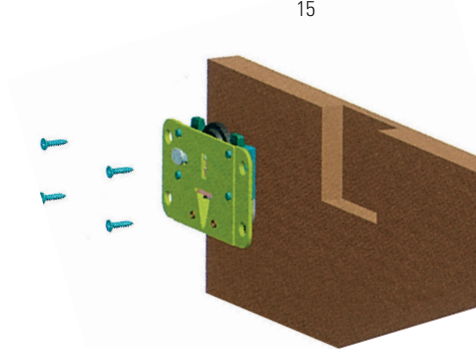
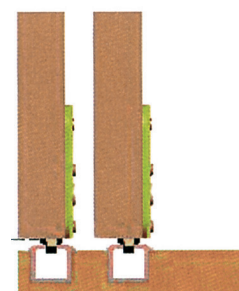
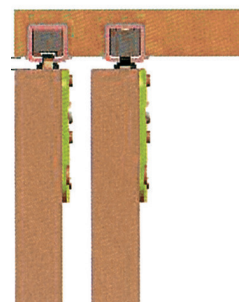
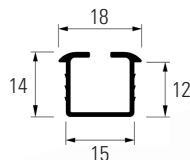


Kit Carros 2 Portas

Inclui:

- 8 carros (aplica-se para superior e inferior).
- 4 amortecedores para as calhas superiores.

100W40000

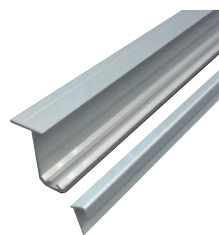


VOLARE V35

Mecanismo de 2 ou 3 portas de correr suspensas.

Características da porta:

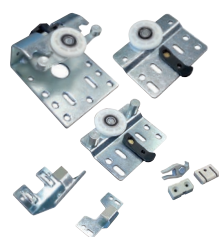
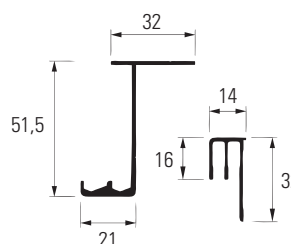
- Peso máx.: 35 kg por porta.
- Espessura: 16-21 mm.
- Largura máx.: 1000 mm.
- Altura máx.: 2400 mm.



Kit Calhas Superior e Inferior



L (m)	Código
2	V35001200
3	V35001300



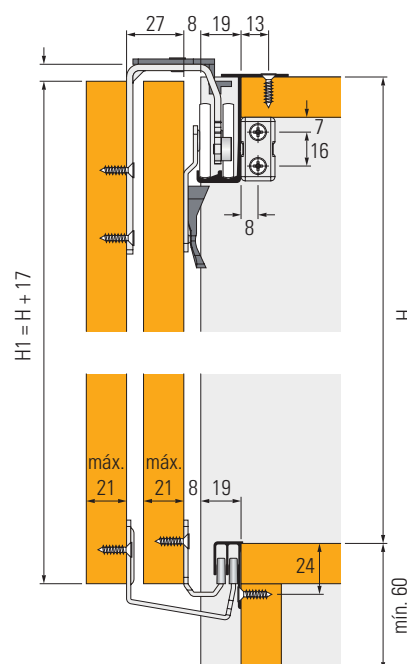
Kit Carros 2 Portas

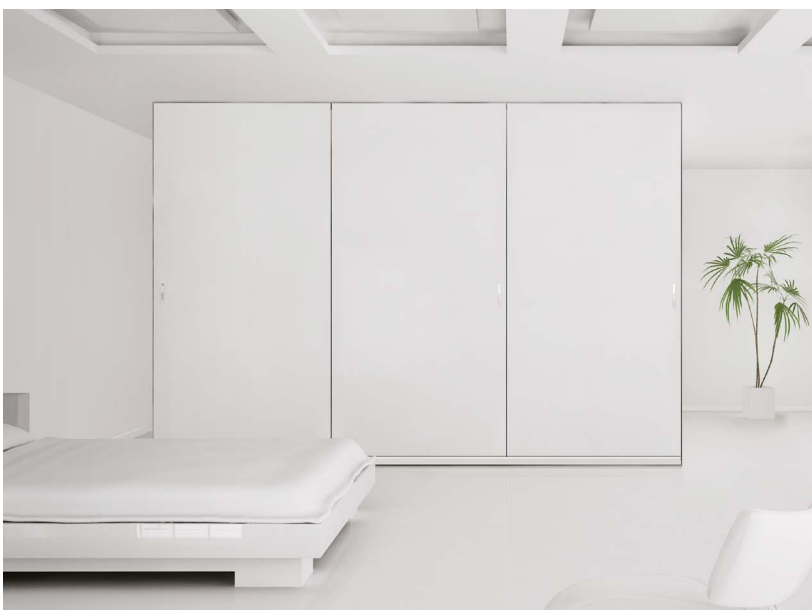
V35S2P000



Kit Carros 3 Portas

V35S3P000





VOLARE V80 ADAPTA

Mecanismo de 2 ou 3 portas de correr suspensas.

Fecho amortizado.

Abertura amortizada opcional.

Características da porta:

- Peso máx.: 80 kg por porta.
- Espessura: 16-46 mm.
- Largura máx.: 1400 mm.
- Altura máx.: 2900 mm.



Kit Calhas



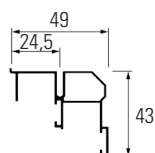
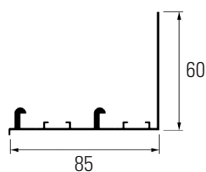
L (m)

Código

2 V80ACK200

3 V80ACK300

4 V80ACK400



Kit Carros 2 ou 3 Portas

Inclui carros superiores e inferiores para 1 porta exterior e 1/2 interior(es) de madeira com fecho amortecido (2/3 amortecedores).

Portas

Código

2 V80A00K2P

3 V80A00K3P



Kit Amortecedor de Abertura

Opcional.

V80A00K1F

