

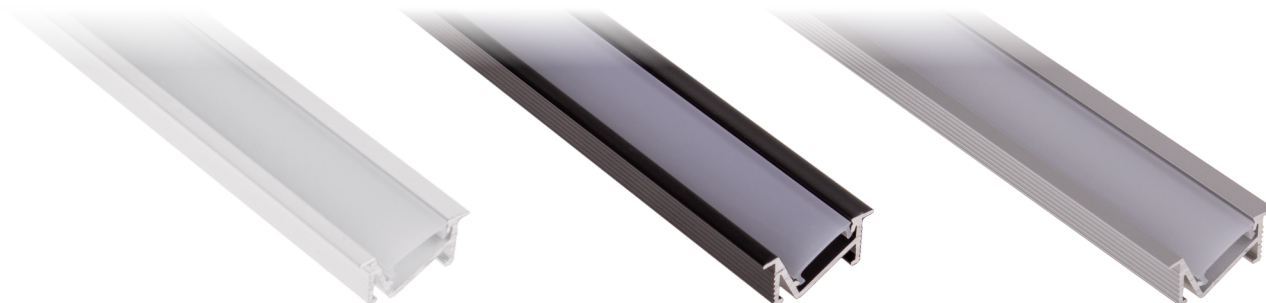
# KARTA KATALOGOWA

CATALOGUE CARD / DATENBLATT

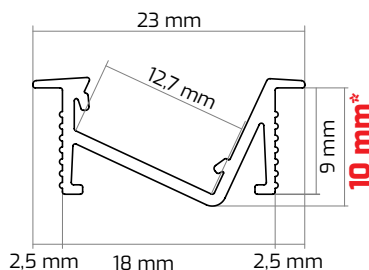


## Profil ZENOLINE

ZENOLINE Profile  
Profil ZENOLINE



Indeks Index / Artikelnummer	Kod EAN Code EAN / EAN-Code	Kolor Color / Farbe	Klosz Cover / Abdeckung	Długość profilu Profile length / Profillänge
<b>PROFIL-ZENOLINE-OP-2M-B</b>	5908293400178	<b>BIAŁY</b> WHITE / WEISS	<b>MLECZNY</b> OPAL / OPAL	<b>2 m</b>
<b>PROFIL-ZENOLINE-OP-2M-C</b>	5908293400185	<b>CZARNY</b> BLACK / SCHWARZ	<b>MLECZNY</b> OPAL / OPAL	<b>2 m</b>
<b>PROFIL-ZENOLINE-OP-2M-W</b>	5908293400161	<b>ALUMINIUM</b> ALUMINIUM / ALUMINIUM	<b>MLECZNY</b> OPAL / OPAL	<b>2 m</b>
<b>PROFIL-ZENOLINE-OP-3M-B</b>	5908293404473	<b>BIAŁY</b> WHITE / WEISS	<b>MLECZNY</b> OPAL / OPAL	<b>3 m</b>
<b>PROFIL-ZENOLINE-OP-3M-C</b>	5908293404480	<b>CZARNY</b> BLACK / SCHWARZ	<b>MLECZNY</b> OPAL / OPAL	<b>3 m</b>
<b>PROFIL-ZENOLINE-OP-3M-W</b>	5908293404497	<b>ALUMINIUM</b> ALUMINIUM / ALUMINIUM	<b>MLECZNY</b> OPAL / OPAL	<b>3 m</b>



**\*Głębokość frezowania dla profilu ZENOLINE to 10-11 mm.**

**\*Die Frästiefe für das ZENOLINE-Profil beträgt 10-11 mm.**

**\*The milling depth for the ZENOLINE profile is 10-11 mm.**

## Dodatkowe akcesoria

Additional accessories  
Zusätzliches Zubehör

### Zaślepka czarna do ZENOLINE

Black end cap for ZENOLINE  
Schwarze Endkappe für ZENOLINE

**OP2-ZASL-ZLINE-BI-01**

5900652149919

### Zaślepka biała do ZENOLINE

White end cap for ZENOLINE  
Weisse Endkappe für ZENOLINE

**OP2-ZASL-ZLINE-CZ-01**

5900652149926

### Zaślepka biała do ZENOLINE

Grey end cap for ZENOLINE  
Graue Endkappe für ZENOLINE

**OP2-ZASL-ZLINE-SZ-01**

5900652149902



Design Light Sp. z o.o., ul. Wrocławska 1B, 48-340 Głuchotazy, Poland  
tel. +48 77 408 71 30, mail: bh@designlight.pl, web: www.designlight.pl  
tel. +48 77 408 71 35, mail: export@designlight.eu, web: www.designlight.eu